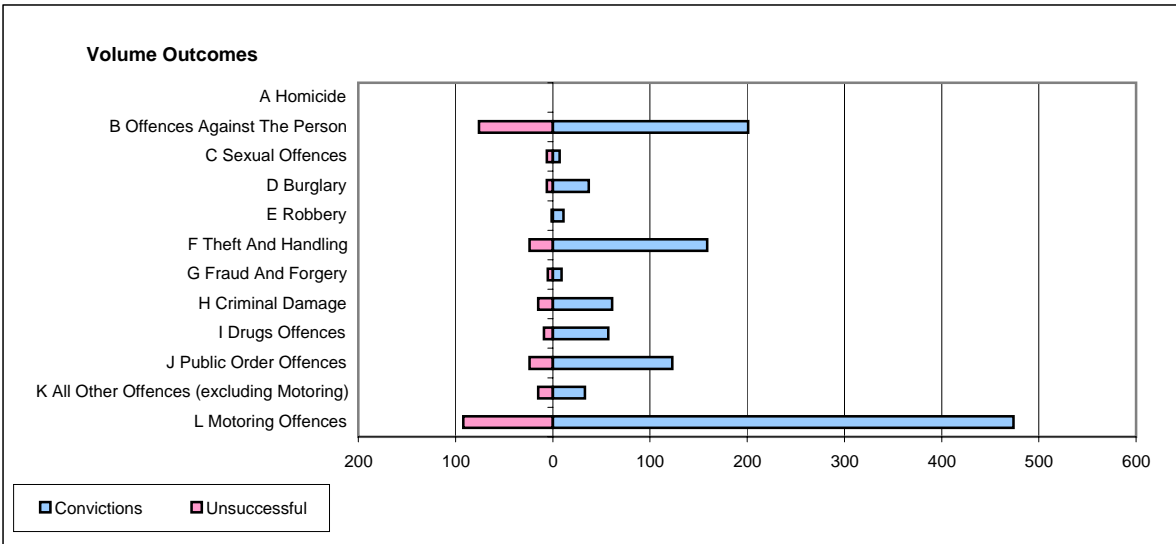
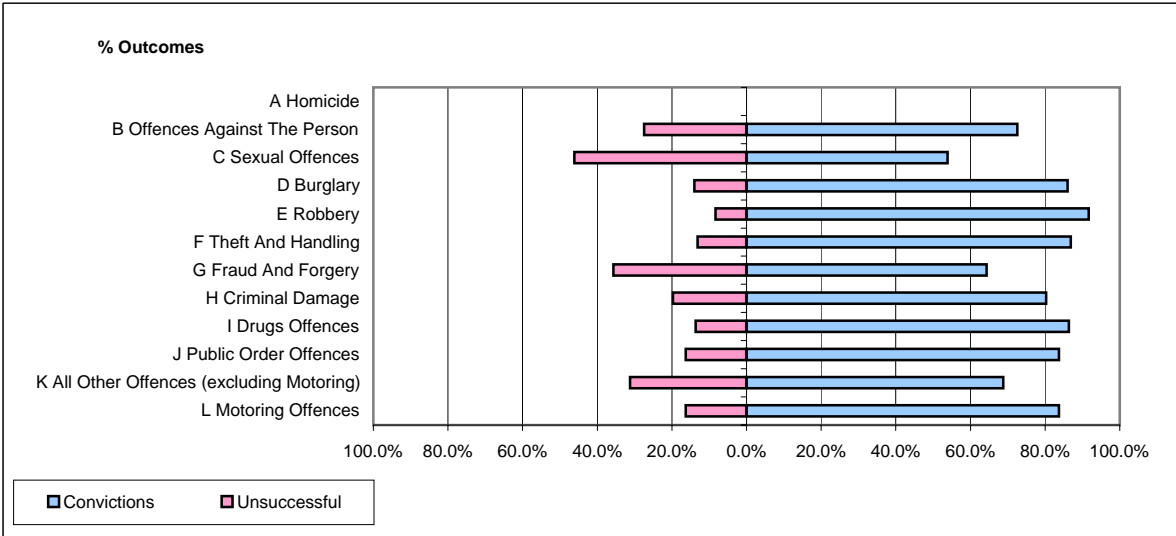


CPS OUTCOMES BY PRINCIPAL OFFENCE CATEGORY

September 2006

P22-Leicestershire



	Convictions		Unsuccessful	
	Number of Defendants	%	Number of Defendants	%
A Homicide	0	#DIV/0!	0	#DIV/0!
B Offences Against The Person	201	72.6%	76	27.4%
C Sexual Offences	7	53.8%	6	46.2%
D Burglary	37	86.0%	6	14.0%
E Robbery	11	91.7%	1	8.3%
F Theft And Handling	159	86.9%	24	13.1%
G Fraud And Forgery	9	64.3%	5	35.7%
H Criminal Damage	61	80.3%	15	19.7%
I Drugs Offences	57	86.4%	9	13.6%
J Public Order Offences	123	83.7%	24	16.3%
K All Other Offences (excluding Motoring)	33	68.8%	15	31.3%
L Motoring Offences	474	83.7%	92	16.3%
Admin Finalisations	0	0.0%	42	100.0%
TOTAL	1,172	78.8%	315	21.2%