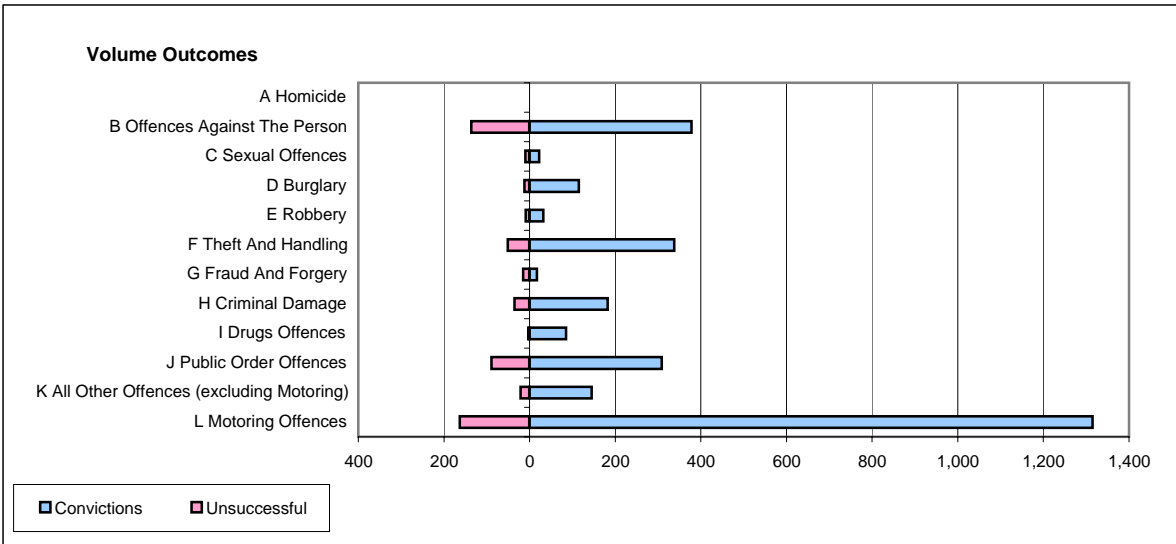
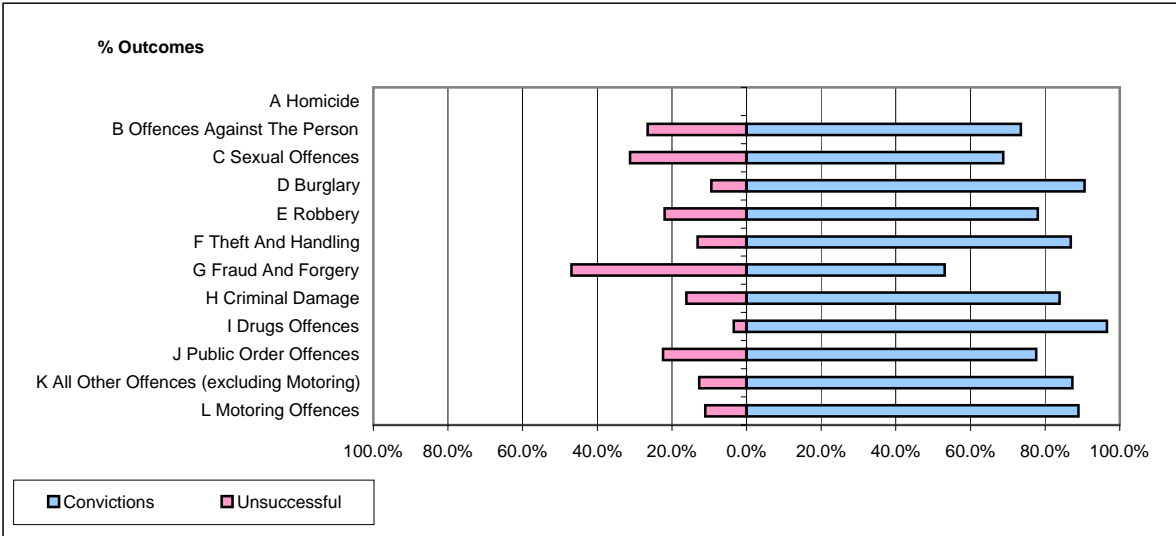


CPS OUTCOMES BY PRINCIPAL OFFENCE CATEGORY

September 2006

P21-Lancashire



	Convictions		Unsuccessful	
	Number of Defendants	%	Number of Defendants	%
A Homicide	0	#DIV/0!	0	#DIV/0!
B Offences Against The Person	378	73.5%	136	26.5%
C Sexual Offences	22	68.8%	10	31.3%
D Burglary	115	90.6%	12	9.4%
E Robbery	32	78.0%	9	22.0%
F Theft And Handling	338	86.9%	51	13.1%
G Fraud And Forgery	17	53.1%	15	46.9%
H Criminal Damage	182	83.9%	35	16.1%
I Drugs Offences	85	96.6%	3	3.4%
J Public Order Offences	309	77.6%	89	22.4%
K All Other Offences (excluding Motoring)	145	87.3%	21	12.7%
L Motoring Offences	1,315	89.0%	163	11.0%
Admin Finalisations	0	0.0%	75	100.0%
TOTAL	2,938	82.6%	619	17.4%