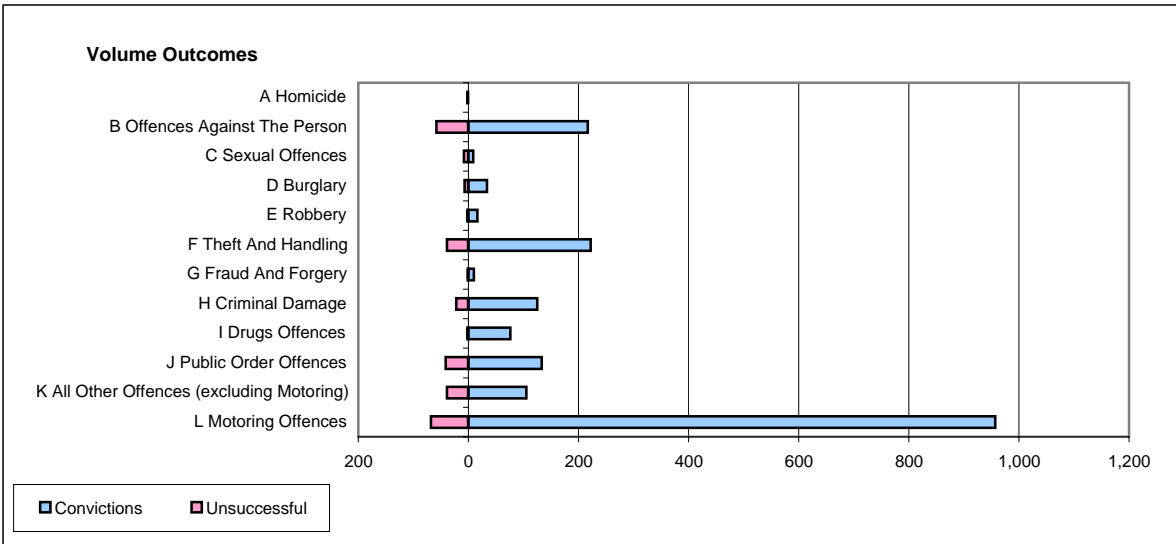
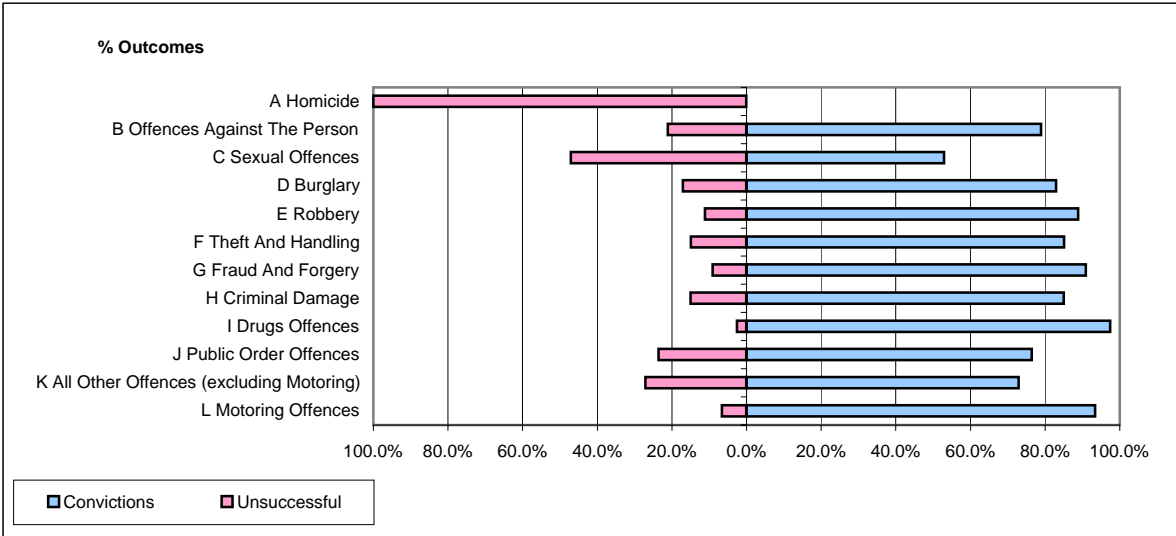


CPS OUTCOMES BY PRINCIPAL OFFENCE CATEGORY

September 2006

P20-Kent



| | Convictions | | Unsuccessful | |
|--|----------------------|--------------|----------------------|---------------|
| | Number of Defendants | % | Number of Defendants | % |
| A Homicide | 0 | 0.0% | 2 | 100.0% |
| B Offences Against The Person | 217 | 78.9% | 58 | 21.1% |
| C Sexual Offences | 9 | 52.9% | 8 | 47.1% |
| D Burglary | 34 | 82.9% | 7 | 17.1% |
| E Robbery | 16 | 88.9% | 2 | 11.1% |
| F Theft And Handling | 222 | 85.1% | 39 | 14.9% |
| G Fraud And Forgery | 10 | 90.9% | 1 | 9.1% |
| H Criminal Damage | 125 | 85.0% | 22 | 15.0% |
| I Drugs Offences | 76 | 97.4% | 2 | 2.6% |
| J Public Order Offences | 133 | 76.4% | 41 | 23.6% |
| K All Other Offences (excluding Motoring) | 105 | 72.9% | 39 | 27.1% |
| L Motoring Offences | 957 | 93.4% | 68 | 6.6% |
| Admin Finalisations | 0 | 0.0% | 32 | 100.0% |
| TOTAL | 1,904 | 85.6% | 321 | 14.4% |