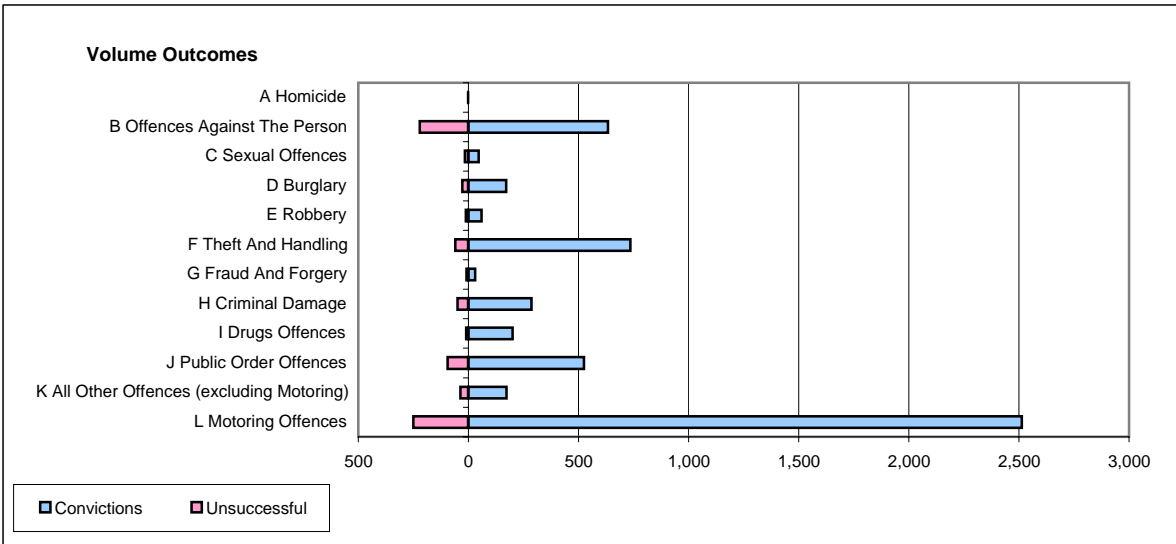
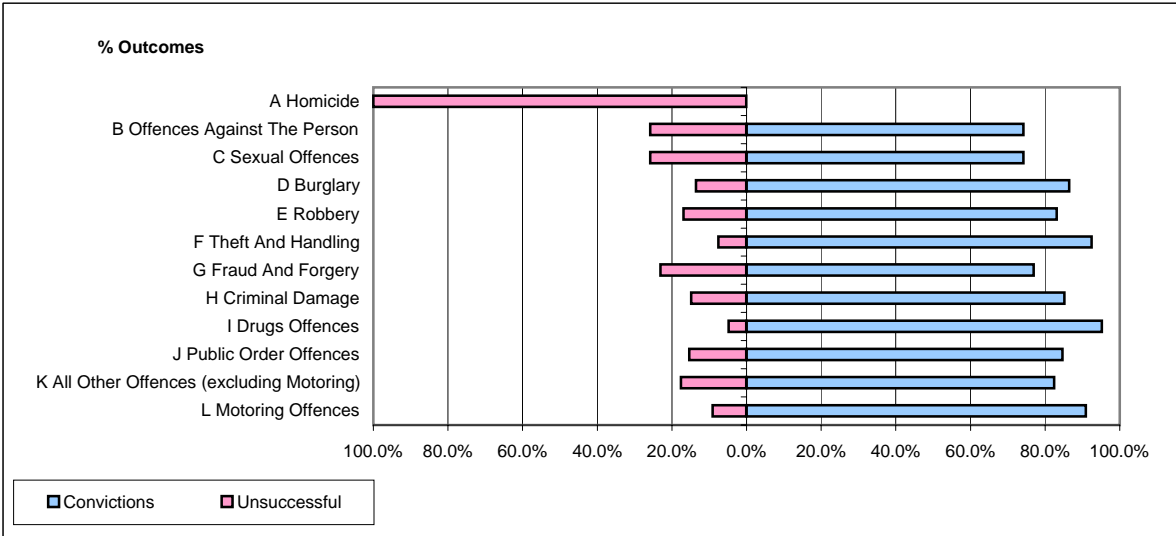


CPS OUTCOMES BY PRINCIPAL OFFENCE CATEGORY

September 2006

P15-GreaterManchester



	Convictions		Unsuccessful	
	Number of Defendants	%	Number of Defendants	%
A Homicide	0	0.0%	1	100.0%
B Offences Against The Person	634	74.2%	221	25.8%
C Sexual Offences	46	74.2%	16	25.8%
D Burglary	172	86.4%	27	13.6%
E Robbery	59	83.1%	12	16.9%
F Theft And Handling	736	92.5%	60	7.5%
G Fraud And Forgery	30	76.9%	9	23.1%
H Criminal Damage	287	85.2%	50	14.8%
I Drugs Offences	200	95.2%	10	4.8%
J Public Order Offences	524	84.7%	95	15.3%
K All Other Offences (excluding Motoring)	173	82.4%	37	17.6%
L Motoring Offences	2,513	91.0%	250	9.0%
Admin Finalisations	0	0.0%	168	100.0%
TOTAL	5,374	84.9%	956	15.1%