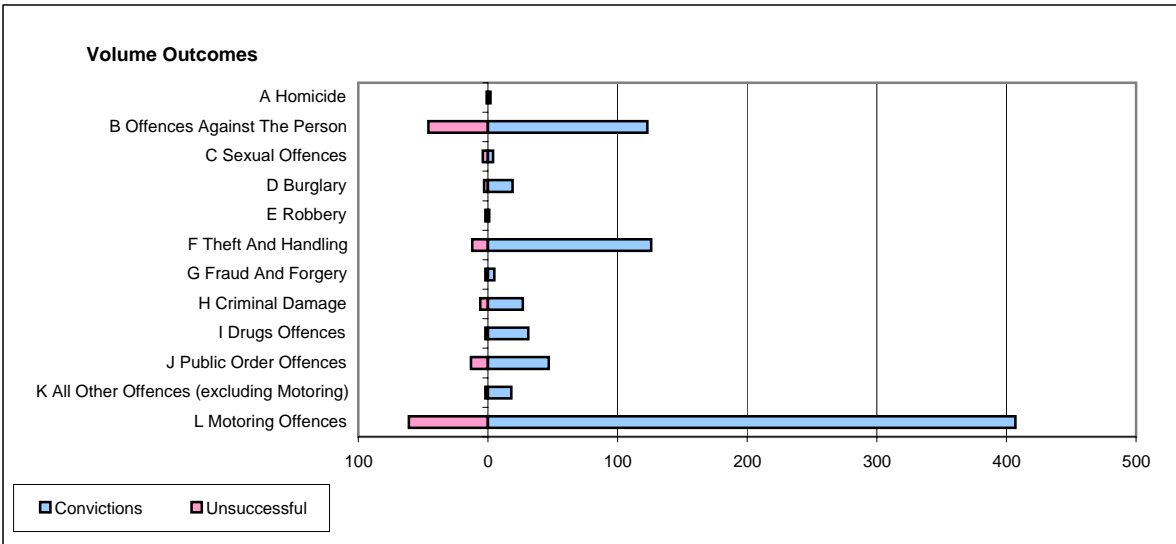
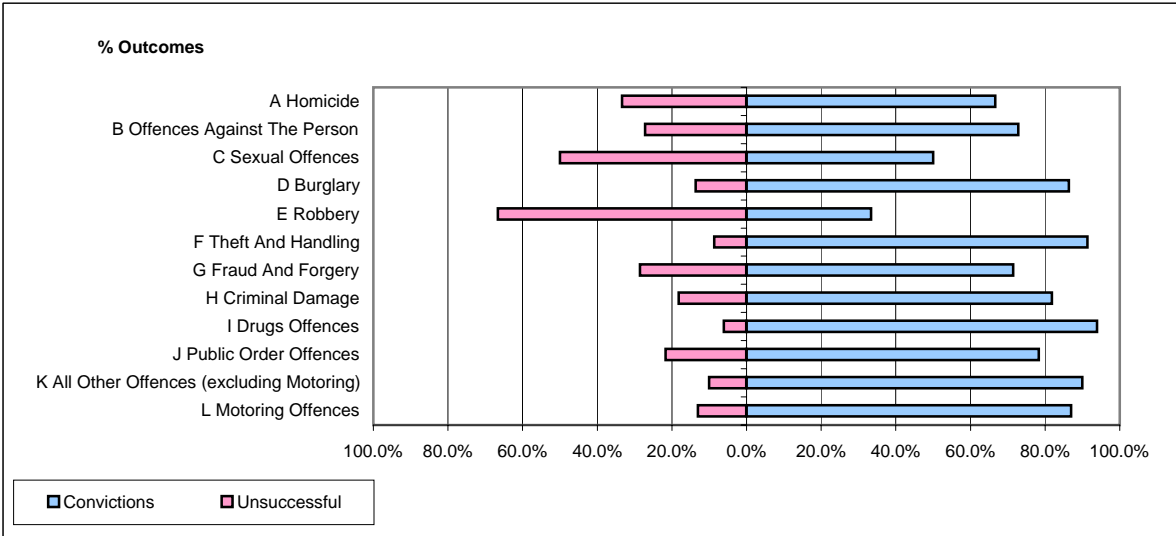


CPS OUTCOMES BY PRINCIPAL OFFENCE CATEGORY

September 2006

P14-Gloucestershire



	Convictions		Unsuccessful	
	Number of Defendants	%	Number of Defendants	%
A Homicide	2	66.7%	1	33.3%
B Offences Against The Person	123	72.8%	46	27.2%
C Sexual Offences	4	50.0%	4	50.0%
D Burglary	19	86.4%	3	13.6%
E Robbery	1	33.3%	2	66.7%
F Theft And Handling	126	91.3%	12	8.7%
G Fraud And Forgery	5	71.4%	2	28.6%
H Criminal Damage	27	81.8%	6	18.2%
I Drugs Offences	31	93.9%	2	6.1%
J Public Order Offences	47	78.3%	13	21.7%
K All Other Offences (excluding Motoring)	18	90.0%	2	10.0%
L Motoring Offences	407	87.0%	61	13.0%
Admin Finalisations	0	0.0%	14	100.0%
TOTAL	810	82.8%	168	17.2%