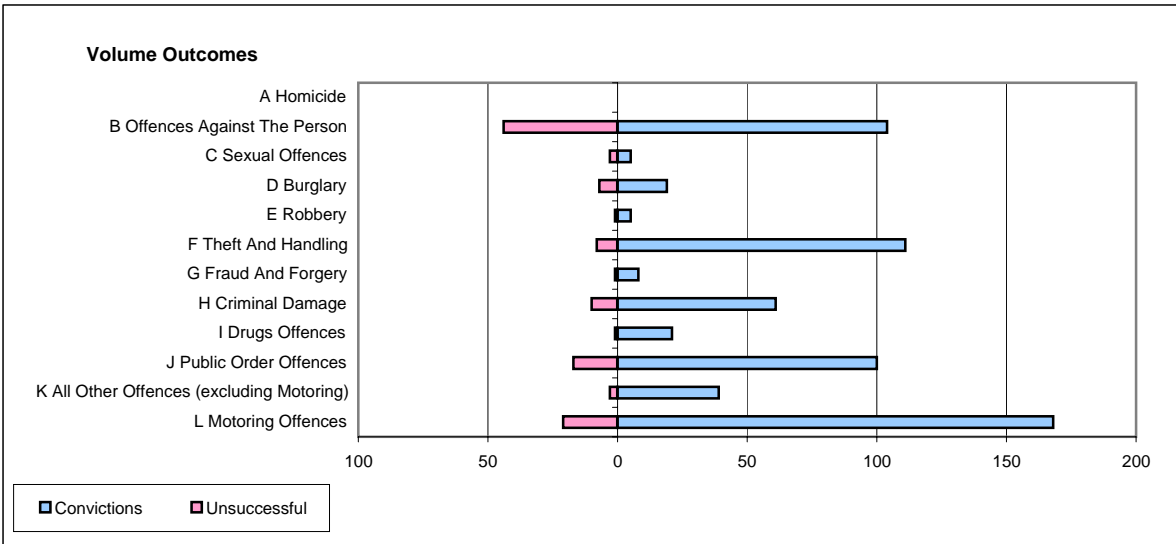
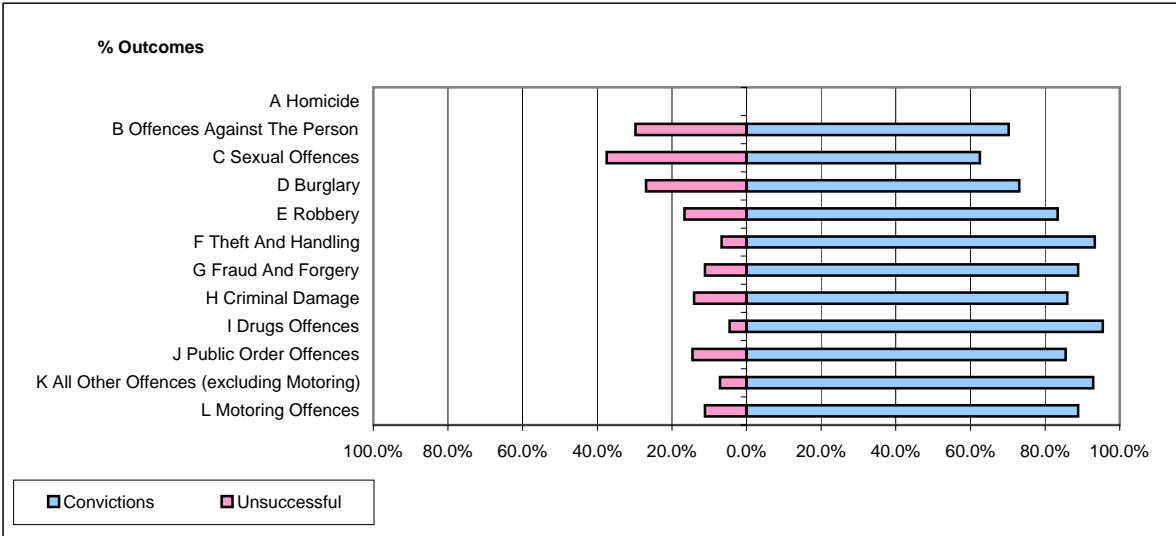


CPS OUTCOMES BY PRINCIPAL OFFENCE CATEGORY

September 2006

P11-Durham



	Convictions		Unsuccessful	
	Number of Defendants	%	Number of Defendants	%
A Homicide	0	#DIV/0!	0	#DIV/0!
B Offences Against The Person	104	70.3%	44	29.7%
C Sexual Offences	5	62.5%	3	37.5%
D Burglary	19	73.1%	7	26.9%
E Robbery	5	83.3%	1	16.7%
F Theft And Handling	111	93.3%	8	6.7%
G Fraud And Forgery	8	88.9%	1	11.1%
H Criminal Damage	61	85.9%	10	14.1%
I Drugs Offences	21	95.5%	1	4.5%
J Public Order Offences	100	85.5%	17	14.5%
K All Other Offences (excluding Motoring)	39	92.9%	3	7.1%
L Motoring Offences	168	88.9%	21	11.1%
Admin Finalisations	0	0.0%	21	100.0%
TOTAL	641	82.4%	137	17.6%