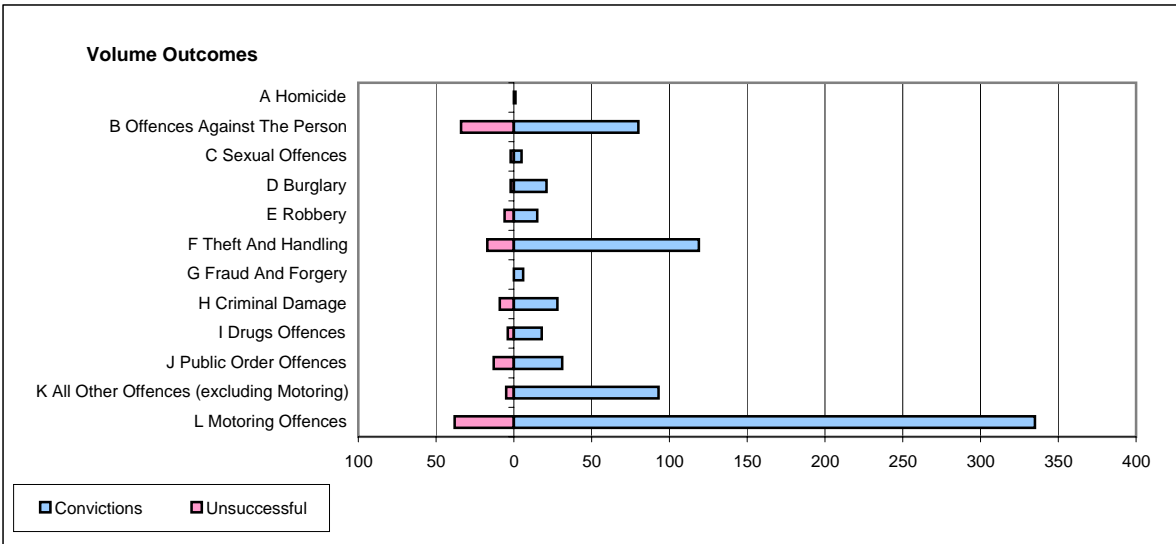
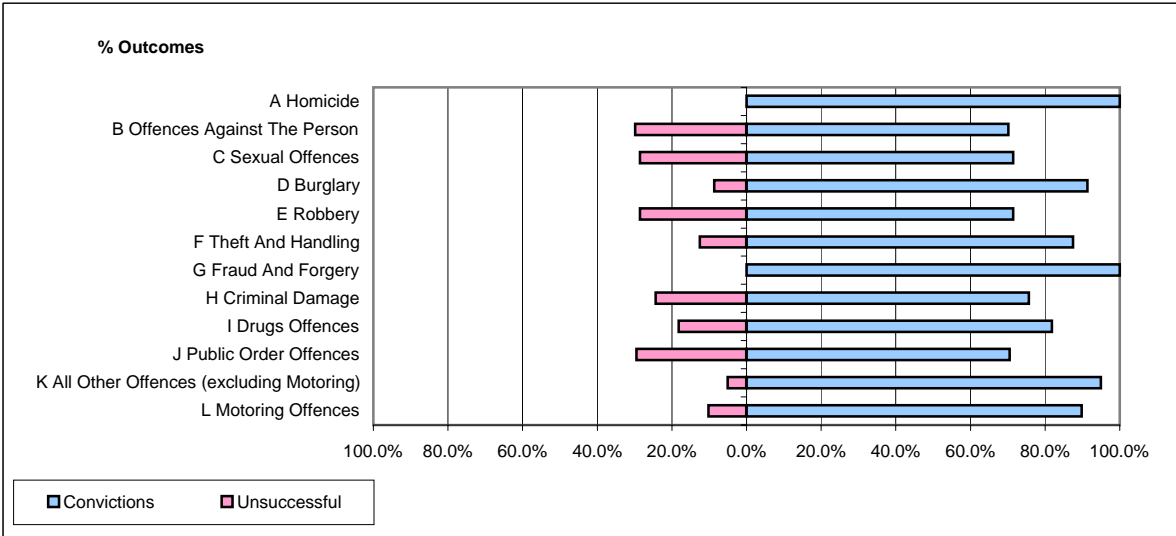


CPS OUTCOMES BY PRINCIPAL OFFENCE CATEGORY

September 2006

P02-Bedfordshire



	Convictions		Unsuccessful	
	Number of Defendants	%	Number of Defendants	%
A Homicide	1	100.0%	0	0.0%
B Offences Against The Person	80	70.2%	34	29.8%
C Sexual Offences	5	71.4%	2	28.6%
D Burglary	21	91.3%	2	8.7%
E Robbery	15	71.4%	6	28.6%
F Theft And Handling	119	87.5%	17	12.5%
G Fraud And Forgery	6	100.0%	0	0.0%
H Criminal Damage	28	75.7%	9	24.3%
I Drugs Offences	18	81.8%	4	18.2%
J Public Order Offences	31	70.5%	13	29.5%
K All Other Offences (excluding Motoring)	93	94.9%	5	5.1%
L Motoring Offences	335	89.8%	38	10.2%
Admin Finalisations	0	0.0%	29	100.0%
TOTAL	752	82.5%	159	17.5%