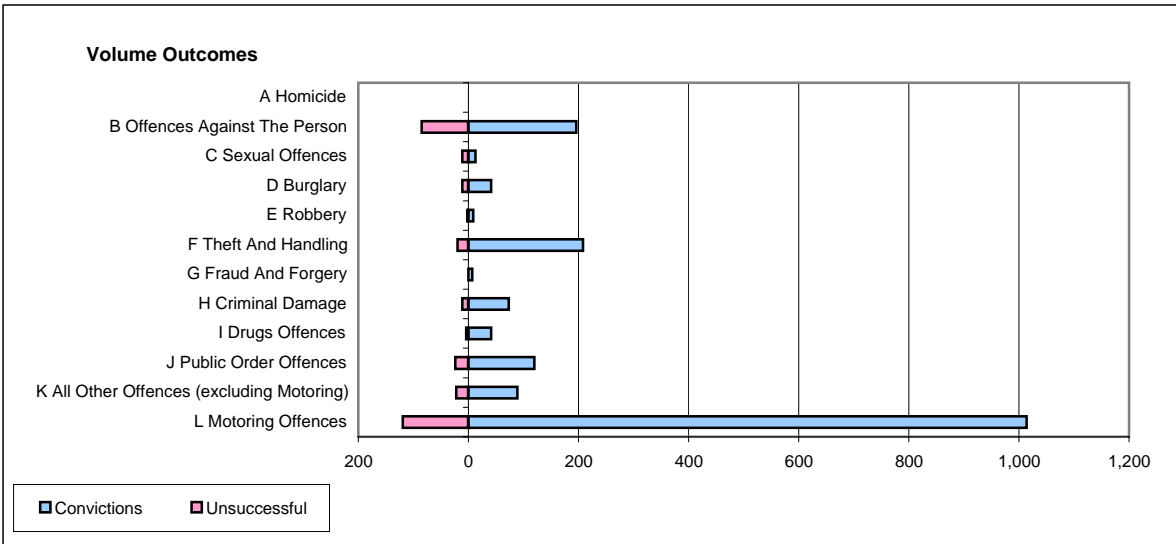
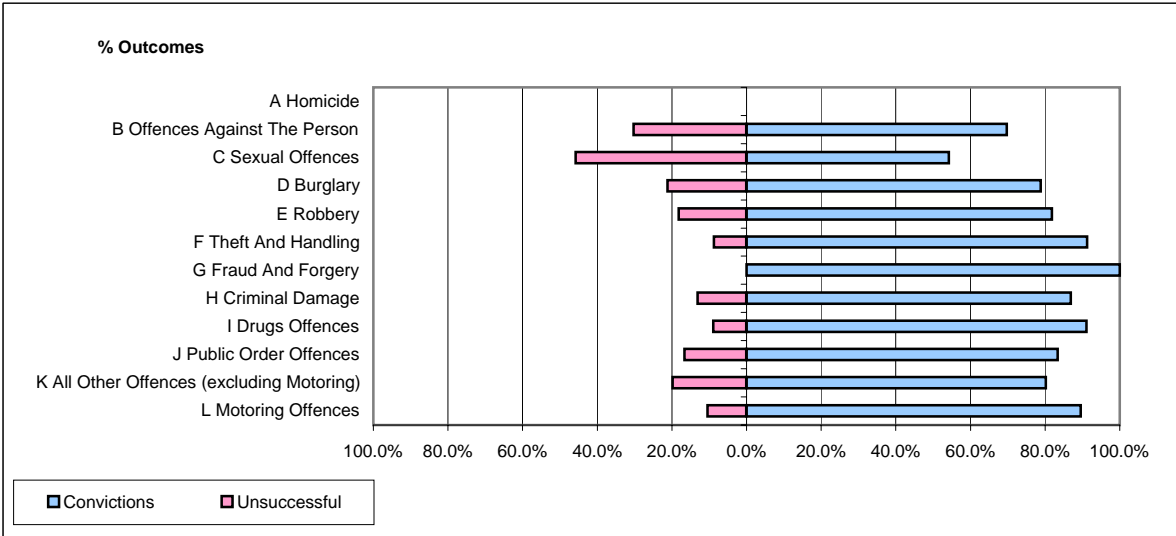


CPS OUTCOMES BY PRINCIPAL OFFENCE CATEGORY

August 2006

P40-WestMercia



	Convictions		Unsuccessful	
	Number of Defendants	%	Number of Defendants	%
A Homicide	0	#DIV/0!	0	#DIV/0!
B Offences Against The Person	196	69.8%	85	30.2%
C Sexual Offences	13	54.2%	11	45.8%
D Burglary	41	78.8%	11	21.2%
E Robbery	9	81.8%	2	18.2%
F Theft And Handling	208	91.2%	20	8.8%
G Fraud And Forgery	7	100.0%	0	0.0%
H Criminal Damage	73	86.9%	11	13.1%
I Drugs Offences	41	91.1%	4	8.9%
J Public Order Offences	120	83.3%	24	16.7%
K All Other Offences (excluding Motoring)	89	80.2%	22	19.8%
L Motoring Offences	1,014	89.5%	119	10.5%
Admin Finalisations	0	0.0%	56	100.0%
TOTAL	1,811	83.2%	365	16.8%