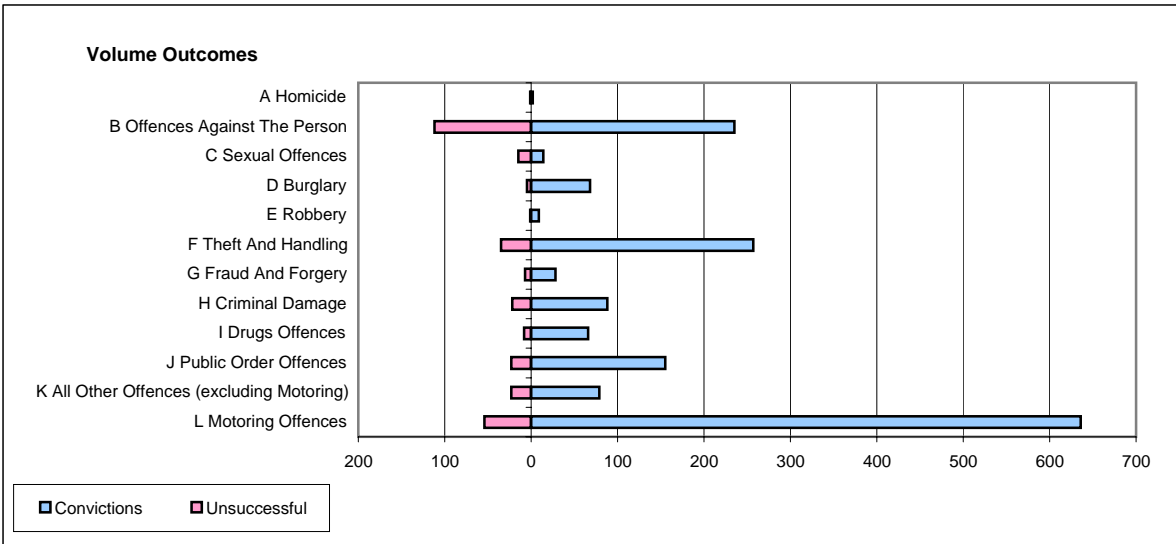
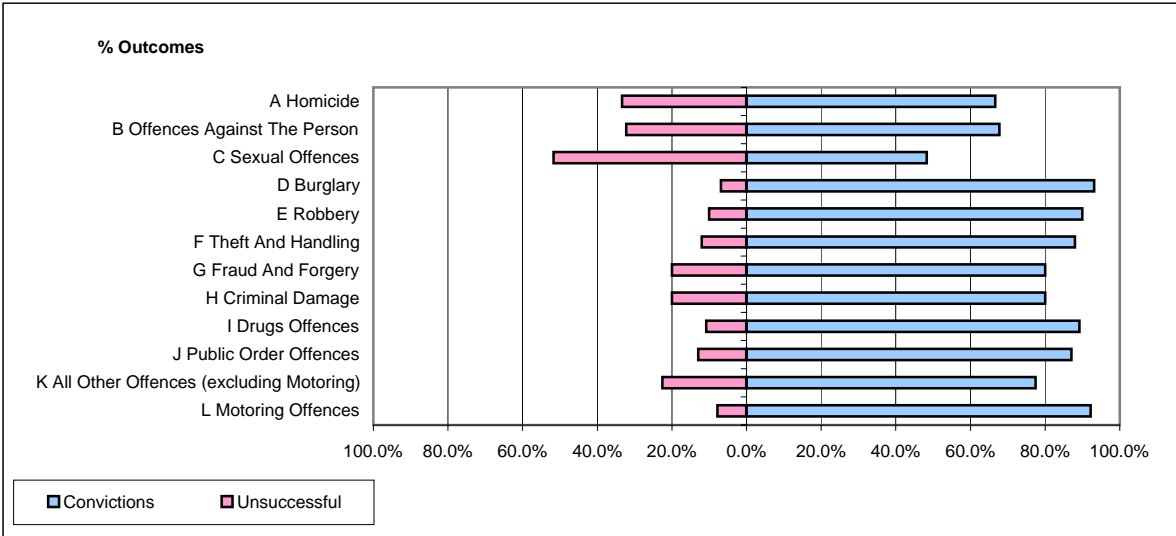


**CPS OUTCOMES BY PRINCIPAL OFFENCE CATEGORY**

**August 2006**

**P37-Sussex**



	Convictions		Unsuccessful	
	Number of Defendants	%	Number of Defendants	%
<b>A Homicide</b>	<b>2</b>	<b>66.7%</b>	<b>1</b>	<b>33.3%</b>
<b>B Offences Against The Person</b>	<b>235</b>	<b>67.7%</b>	<b>112</b>	<b>32.3%</b>
<b>C Sexual Offences</b>	<b>14</b>	<b>48.3%</b>	<b>15</b>	<b>51.7%</b>
<b>D Burglary</b>	<b>68</b>	<b>93.2%</b>	<b>5</b>	<b>6.8%</b>
<b>E Robbery</b>	<b>9</b>	<b>90.0%</b>	<b>1</b>	<b>10.0%</b>
<b>F Theft And Handling</b>	<b>257</b>	<b>88.0%</b>	<b>35</b>	<b>12.0%</b>
<b>G Fraud And Forgery</b>	<b>28</b>	<b>80.0%</b>	<b>7</b>	<b>20.0%</b>
<b>H Criminal Damage</b>	<b>88</b>	<b>80.0%</b>	<b>22</b>	<b>20.0%</b>
<b>I Drugs Offences</b>	<b>66</b>	<b>89.2%</b>	<b>8</b>	<b>10.8%</b>
<b>J Public Order Offences</b>	<b>155</b>	<b>87.1%</b>	<b>23</b>	<b>12.9%</b>
<b>K All Other Offences (excluding Motoring)</b>	<b>79</b>	<b>77.5%</b>	<b>23</b>	<b>22.5%</b>
<b>L Motoring Offences</b>	<b>636</b>	<b>92.2%</b>	<b>54</b>	<b>7.8%</b>
<b>Admin Finalisations</b>	<b>0</b>	<b>0.0%</b>	<b>44</b>	<b>100.0%</b>
<b>TOTAL</b>	<b>1,637</b>	<b>82.4%</b>	<b>350</b>	<b>17.6%</b>