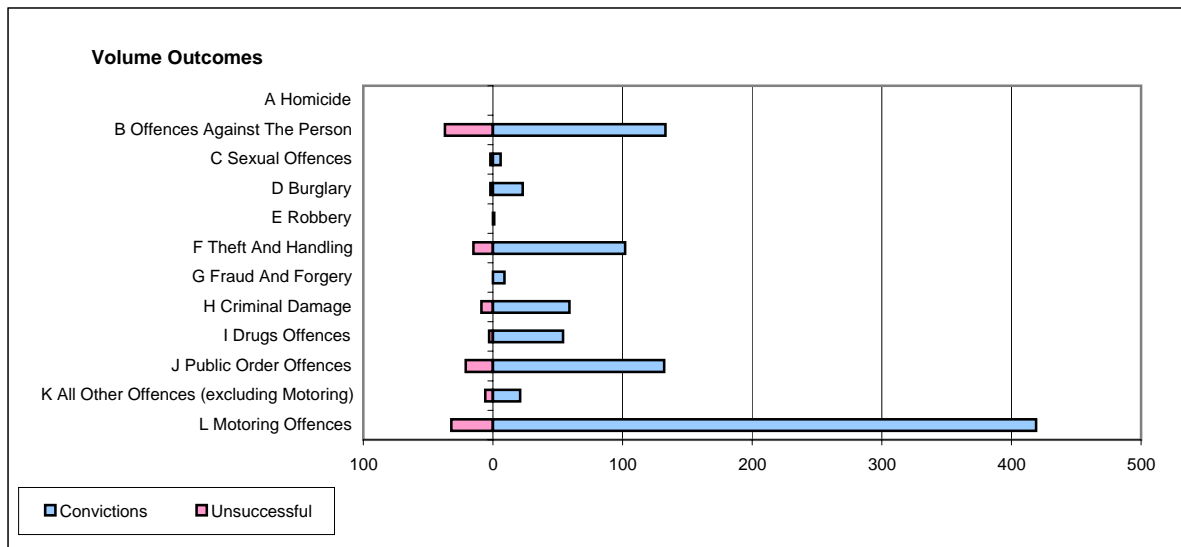
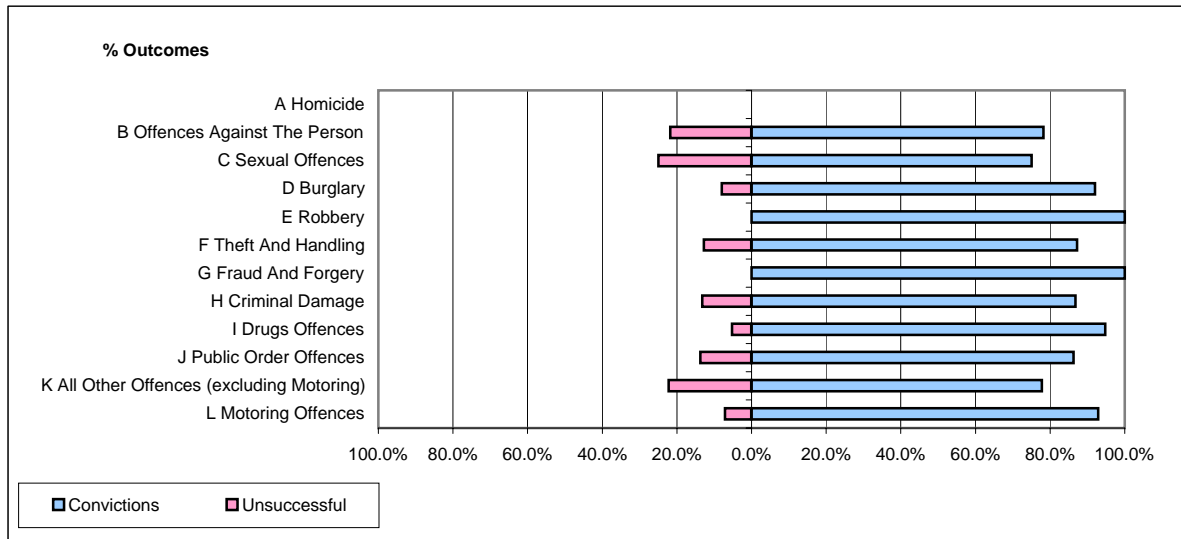


**CPS OUTCOMES BY PRINCIPAL OFFENCE CATEGORY**

**August 2006**

**P35-Suffolk**



	Convictions		Unsuccessful	
	Number of Defendants	%	Number of Defendants	%
<b>A Homicide</b>	<b>0</b>	<b>#DIV/0!</b>	<b>0</b>	<b>#DIV/0!</b>
<b>B Offences Against The Person</b>	<b>133</b>	<b>78.2%</b>	<b>37</b>	<b>21.8%</b>
<b>C Sexual Offences</b>	<b>6</b>	<b>75.0%</b>	<b>2</b>	<b>25.0%</b>
<b>D Burglary</b>	<b>23</b>	<b>92.0%</b>	<b>2</b>	<b>8.0%</b>
<b>E Robbery</b>	<b>1</b>	<b>100.0%</b>	<b>0</b>	<b>0.0%</b>
<b>F Theft And Handling</b>	<b>102</b>	<b>87.2%</b>	<b>15</b>	<b>12.8%</b>
<b>G Fraud And Forgery</b>	<b>9</b>	<b>100.0%</b>	<b>0</b>	<b>0.0%</b>
<b>H Criminal Damage</b>	<b>59</b>	<b>86.8%</b>	<b>9</b>	<b>13.2%</b>
<b>I Drugs Offences</b>	<b>54</b>	<b>94.7%</b>	<b>3</b>	<b>5.3%</b>
<b>J Public Order Offences</b>	<b>132</b>	<b>86.3%</b>	<b>21</b>	<b>13.7%</b>
<b>K All Other Offences (excluding Motoring)</b>	<b>21</b>	<b>77.8%</b>	<b>6</b>	<b>22.2%</b>
<b>L Motoring Offences</b>	<b>419</b>	<b>92.9%</b>	<b>32</b>	<b>7.1%</b>
<b>Admin Finalisations</b>	<b>0</b>	<b>0.0%</b>	<b>27</b>	<b>100.0%</b>
<b>TOTAL</b>	<b>959</b>	<b>86.2%</b>	<b>154</b>	<b>13.8%</b>