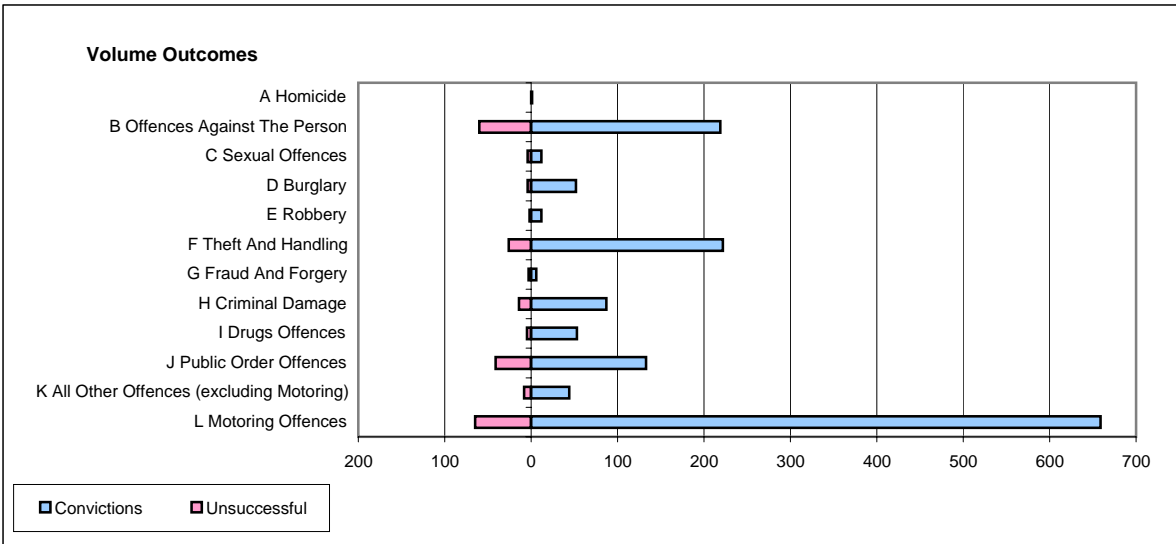
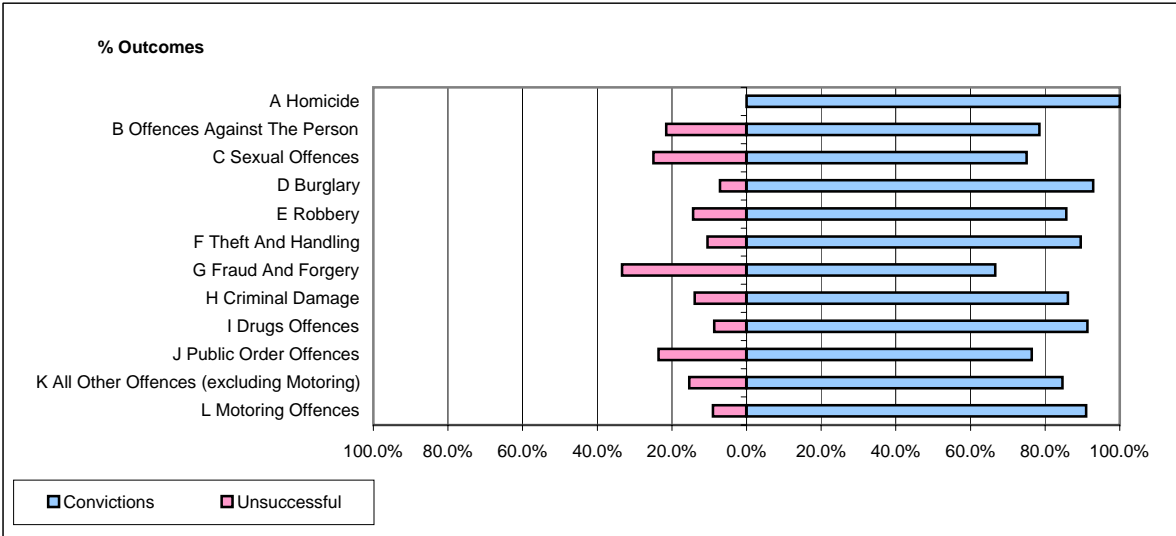


**CPS OUTCOMES BY PRINCIPAL OFFENCE CATEGORY**

**August 2006**

**P34-Staffordshire**



	Convictions		Unsuccessful	
	Number of Defendants	%	Number of Defendants	%
<b>A Homicide</b>	<b>1</b>	<b>100.0%</b>	<b>0</b>	<b>0.0%</b>
<b>B Offences Against The Person</b>	<b>219</b>	<b>78.5%</b>	<b>60</b>	<b>21.5%</b>
<b>C Sexual Offences</b>	<b>12</b>	<b>75.0%</b>	<b>4</b>	<b>25.0%</b>
<b>D Burglary</b>	<b>52</b>	<b>92.9%</b>	<b>4</b>	<b>7.1%</b>
<b>E Robbery</b>	<b>12</b>	<b>85.7%</b>	<b>2</b>	<b>14.3%</b>
<b>F Theft And Handling</b>	<b>222</b>	<b>89.5%</b>	<b>26</b>	<b>10.5%</b>
<b>G Fraud And Forgery</b>	<b>6</b>	<b>66.7%</b>	<b>3</b>	<b>33.3%</b>
<b>H Criminal Damage</b>	<b>87</b>	<b>86.1%</b>	<b>14</b>	<b>13.9%</b>
<b>I Drugs Offences</b>	<b>53</b>	<b>91.4%</b>	<b>5</b>	<b>8.6%</b>
<b>J Public Order Offences</b>	<b>133</b>	<b>76.4%</b>	<b>41</b>	<b>23.6%</b>
<b>K All Other Offences (excluding Motoring)</b>	<b>44</b>	<b>84.6%</b>	<b>8</b>	<b>15.4%</b>
<b>L Motoring Offences</b>	<b>659</b>	<b>91.0%</b>	<b>65</b>	<b>9.0%</b>
<b>Admin Finalisations</b>	<b>0</b>	<b>0.0%</b>	<b>28</b>	<b>100.0%</b>
<b>TOTAL</b>	<b>1,500</b>	<b>85.2%</b>	<b>260</b>	<b>14.8%</b>