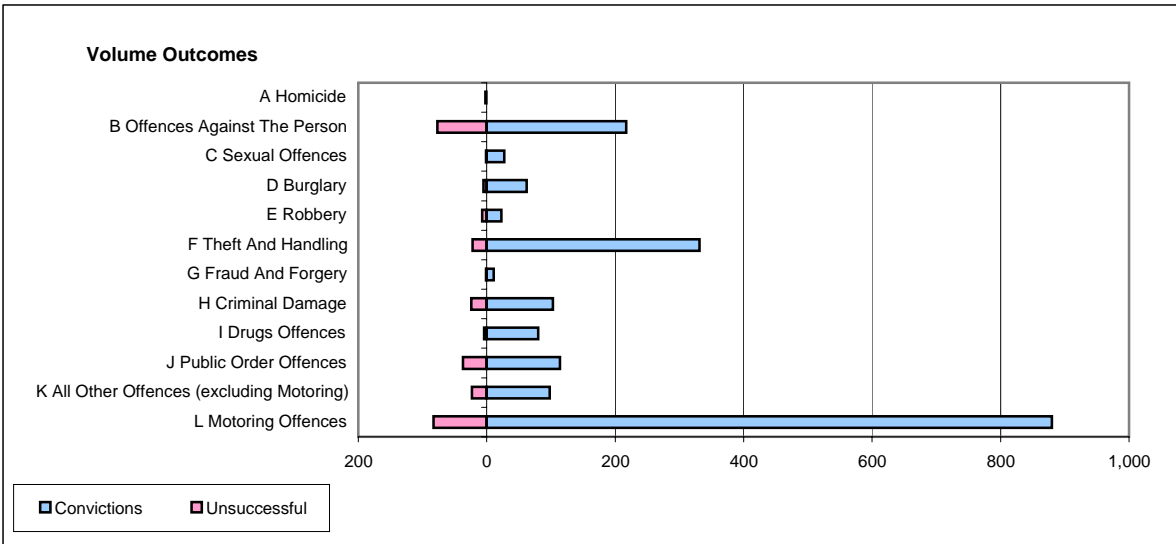
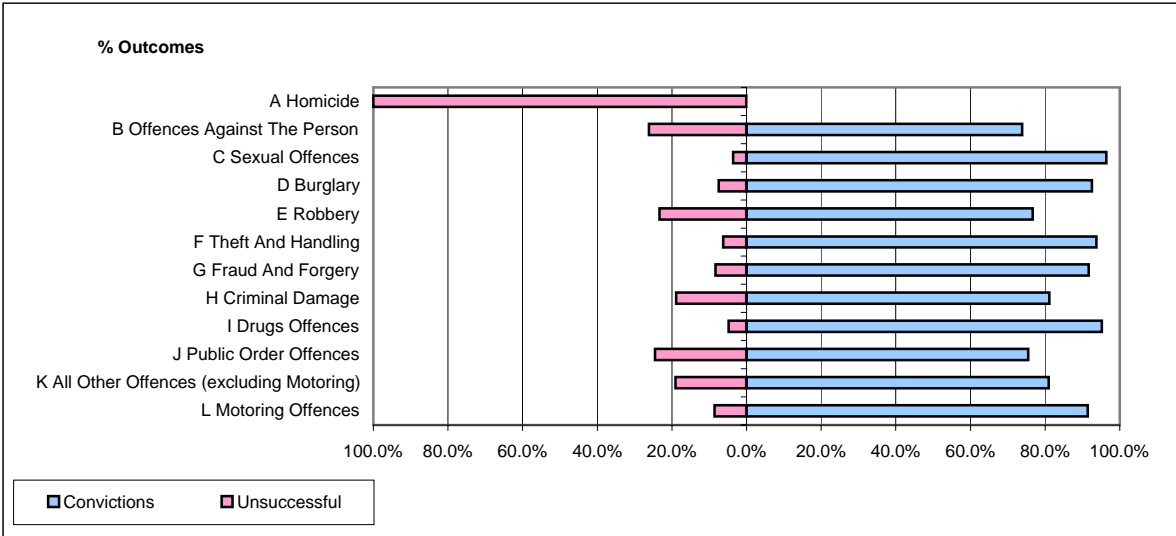


**CPS OUTCOMES BY PRINCIPAL OFFENCE CATEGORY**

**August 2006**

**P33-SouthYorkshire**



	Convictions		Unsuccessful	
	Number of Defendants	%	Number of Defendants	%
<b>A Homicide</b>	<b>0</b>	<b>0.0%</b>	<b>2</b>	<b>100.0%</b>
<b>B Offences Against The Person</b>	<b>217</b>	<b>73.8%</b>	<b>77</b>	<b>26.2%</b>
<b>C Sexual Offences</b>	<b>27</b>	<b>96.4%</b>	<b>1</b>	<b>3.6%</b>
<b>D Burglary</b>	<b>62</b>	<b>92.5%</b>	<b>5</b>	<b>7.5%</b>
<b>E Robbery</b>	<b>23</b>	<b>76.7%</b>	<b>7</b>	<b>23.3%</b>
<b>F Theft And Handling</b>	<b>331</b>	<b>93.8%</b>	<b>22</b>	<b>6.2%</b>
<b>G Fraud And Forgery</b>	<b>11</b>	<b>91.7%</b>	<b>1</b>	<b>8.3%</b>
<b>H Criminal Damage</b>	<b>103</b>	<b>81.1%</b>	<b>24</b>	<b>18.9%</b>
<b>I Drugs Offences</b>	<b>80</b>	<b>95.2%</b>	<b>4</b>	<b>4.8%</b>
<b>J Public Order Offences</b>	<b>114</b>	<b>75.5%</b>	<b>37</b>	<b>24.5%</b>
<b>K All Other Offences (excluding Motoring)</b>	<b>98</b>	<b>81.0%</b>	<b>23</b>	<b>19.0%</b>
<b>L Motoring Offences</b>	<b>880</b>	<b>91.4%</b>	<b>83</b>	<b>8.6%</b>
<b>Admin Finalisations</b>	<b>0</b>	<b>0.0%</b>	<b>25</b>	<b>100.0%</b>
<b>TOTAL</b>	<b>1,946</b>	<b>86.2%</b>	<b>311</b>	<b>13.8%</b>