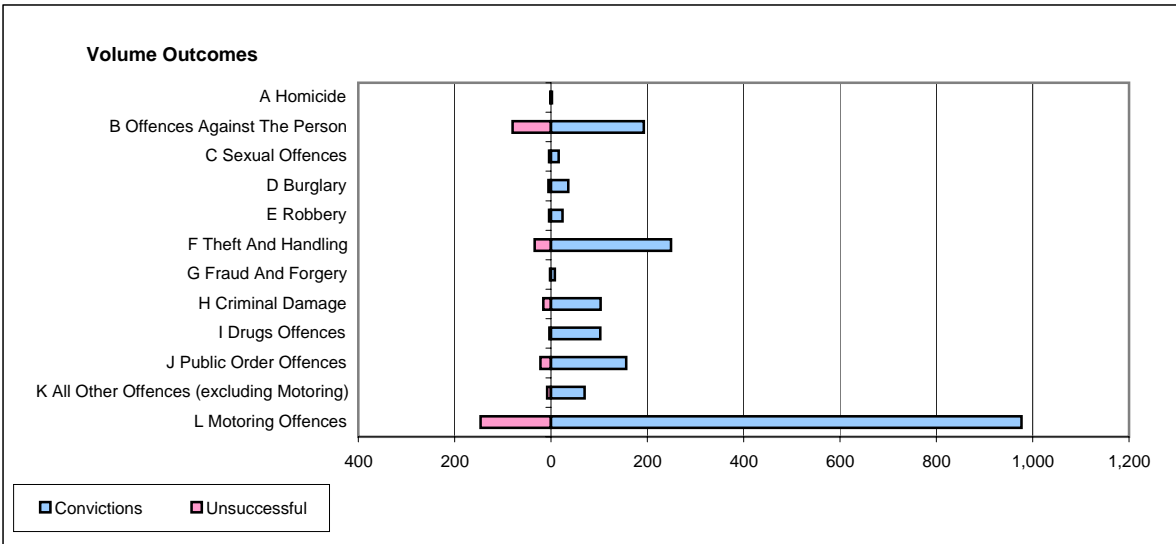
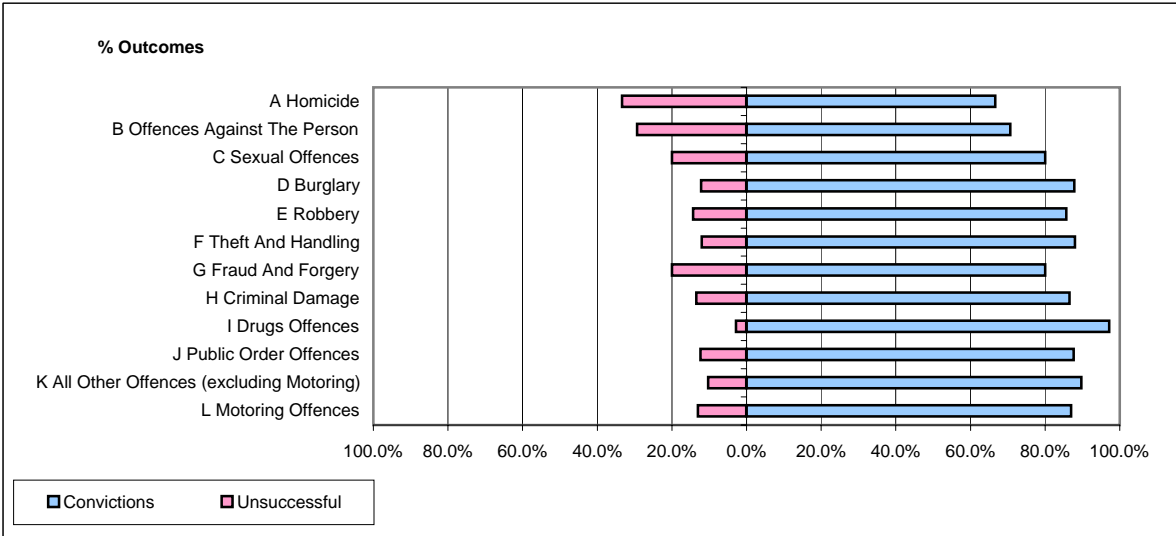


CPS OUTCOMES BY PRINCIPAL OFFENCE CATEGORY

August 2006

P32-SouthWales



	Convictions		Unsuccessful	
	Number of Defendants	%	Number of Defendants	%
A Homicide	2	66.7%	1	33.3%
B Offences Against The Person	193	70.7%	80	29.3%
C Sexual Offences	16	80.0%	4	20.0%
D Burglary	36	87.8%	5	12.2%
E Robbery	24	85.7%	4	14.3%
F Theft And Handling	249	88.0%	34	12.0%
G Fraud And Forgery	8	80.0%	2	20.0%
H Criminal Damage	103	86.6%	16	13.4%
I Drugs Offences	102	97.1%	3	2.9%
J Public Order Offences	156	87.6%	22	12.4%
K All Other Offences (excluding Motoring)	70	89.7%	8	10.3%
L Motoring Offences	977	87.0%	146	13.0%
Admin Finalisations	0	0.0%	142	100.0%
TOTAL	1,936	80.6%	467	19.4%