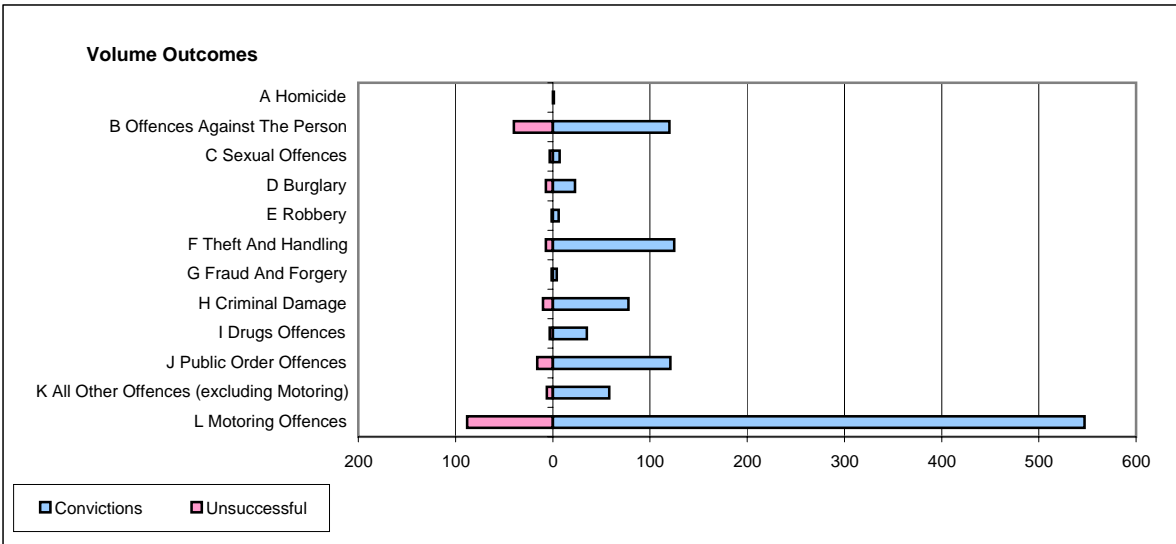
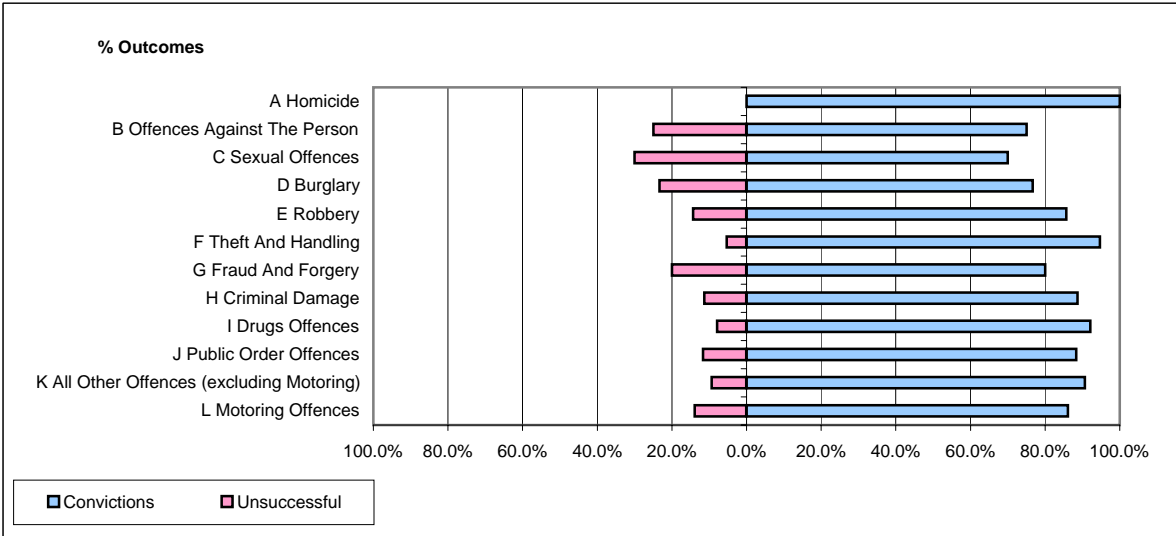


**CPS OUTCOMES BY PRINCIPAL OFFENCE CATEGORY**

**August 2006**

**P29-NorthWales**



	Convictions		Unsuccessful	
	Number of Defendants	%	Number of Defendants	%
<b>A Homicide</b>	<b>1</b>	<b>100.0%</b>	<b>0</b>	<b>0.0%</b>
<b>B Offences Against The Person</b>	<b>120</b>	<b>75.0%</b>	<b>40</b>	<b>25.0%</b>
<b>C Sexual Offences</b>	<b>7</b>	<b>70.0%</b>	<b>3</b>	<b>30.0%</b>
<b>D Burglary</b>	<b>23</b>	<b>76.7%</b>	<b>7</b>	<b>23.3%</b>
<b>E Robbery</b>	<b>6</b>	<b>85.7%</b>	<b>1</b>	<b>14.3%</b>
<b>F Theft And Handling</b>	<b>125</b>	<b>94.7%</b>	<b>7</b>	<b>5.3%</b>
<b>G Fraud And Forgery</b>	<b>4</b>	<b>80.0%</b>	<b>1</b>	<b>20.0%</b>
<b>H Criminal Damage</b>	<b>78</b>	<b>88.6%</b>	<b>10</b>	<b>11.4%</b>
<b>I Drugs Offences</b>	<b>35</b>	<b>92.1%</b>	<b>3</b>	<b>7.9%</b>
<b>J Public Order Offences</b>	<b>121</b>	<b>88.3%</b>	<b>16</b>	<b>11.7%</b>
<b>K All Other Offences (excluding Motoring)</b>	<b>58</b>	<b>90.6%</b>	<b>6</b>	<b>9.4%</b>
<b>L Motoring Offences</b>	<b>547</b>	<b>86.1%</b>	<b>88</b>	<b>13.9%</b>
<b>Admin Finalisations</b>	<b>0</b>	<b>0.0%</b>	<b>20</b>	<b>100.0%</b>
<b>TOTAL</b>	<b>1,125</b>	<b>84.8%</b>	<b>202</b>	<b>15.2%</b>