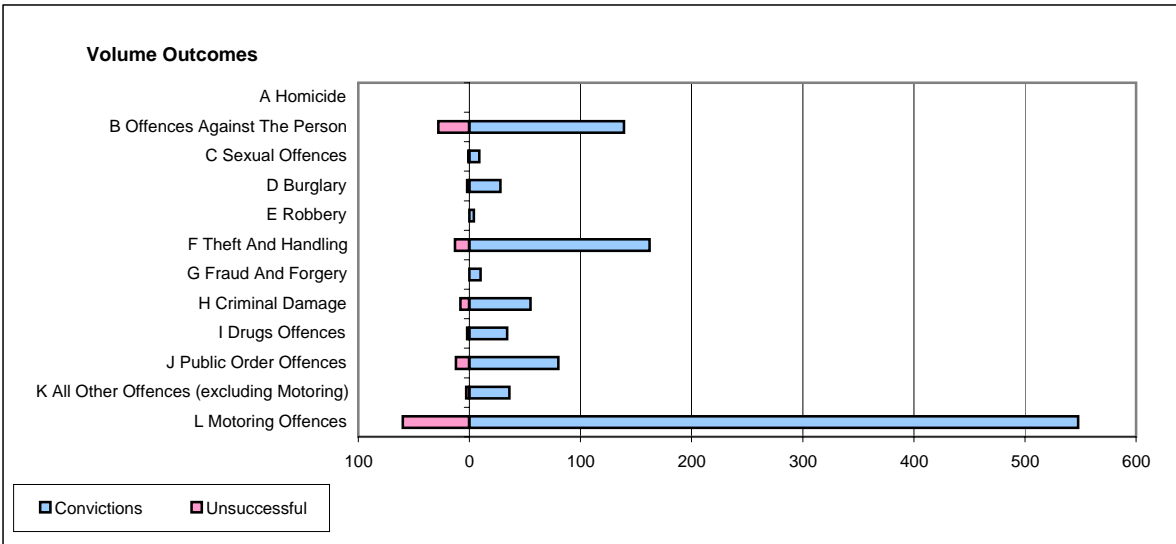
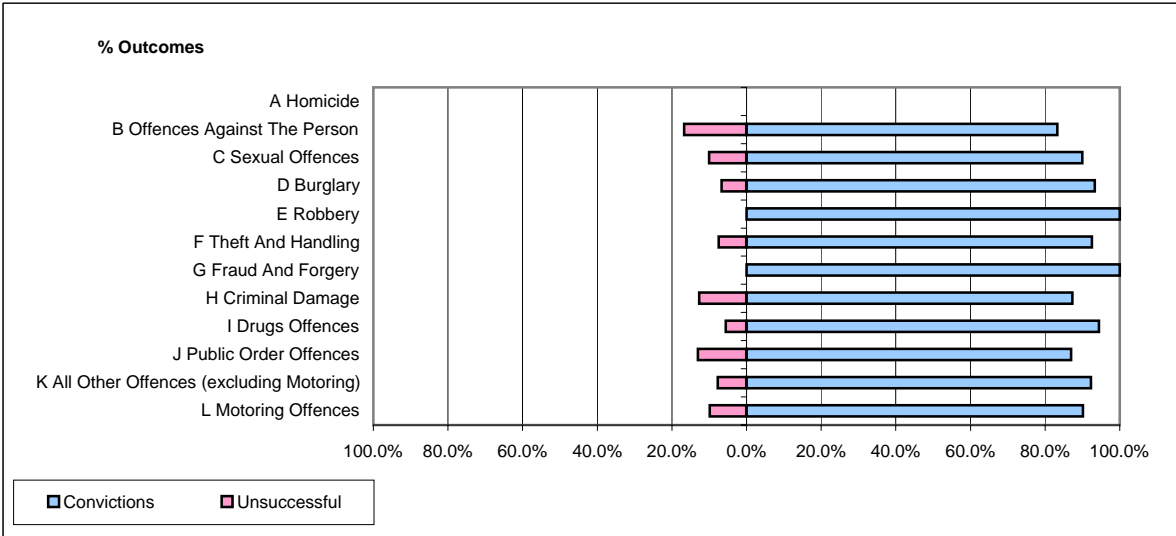


CPS OUTCOMES BY PRINCIPAL OFFENCE CATEGORY

August 2006

P26-Norfolk



	Convictions		Unsuccessful	
	Number of Defendants	%	Number of Defendants	%
A Homicide	0	#DIV/0!	0	#DIV/0!
B Offences Against The Person	139	83.2%	28	16.8%
C Sexual Offences	9	90.0%	1	10.0%
D Burglary	28	93.3%	2	6.7%
E Robbery	4	100.0%	0	0.0%
F Theft And Handling	162	92.6%	13	7.4%
G Fraud And Forgery	10	100.0%	0	0.0%
H Criminal Damage	55	87.3%	8	12.7%
I Drugs Offences	34	94.4%	2	5.6%
J Public Order Offences	80	87.0%	12	13.0%
K All Other Offences (excluding Motoring)	36	92.3%	3	7.7%
L Motoring Offences	548	90.1%	60	9.9%
Admin Finalisations	0	0.0%	22	100.0%
TOTAL	1,105	88.0%	151	12.0%