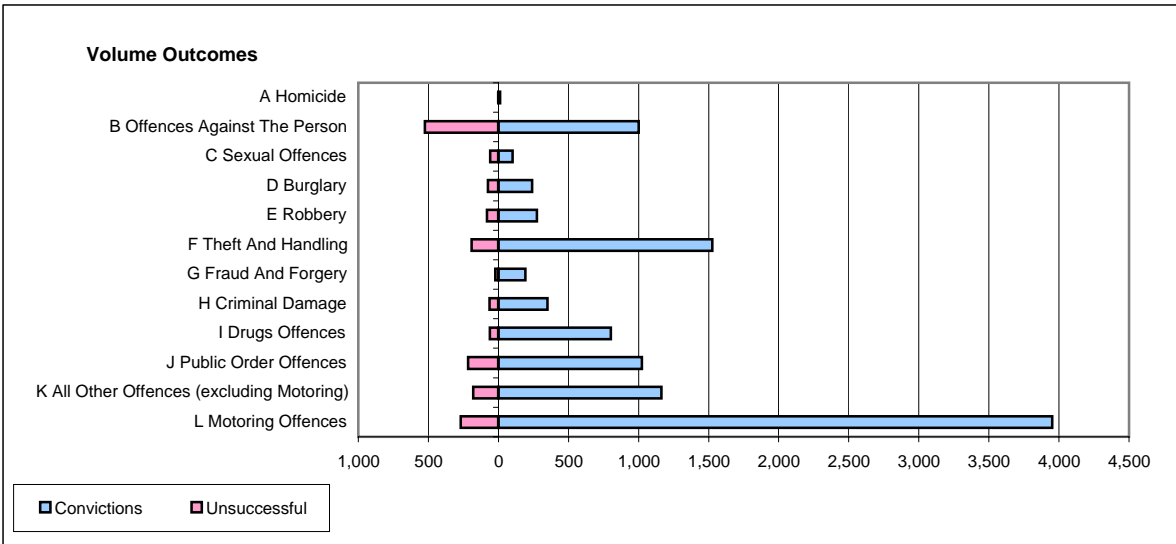
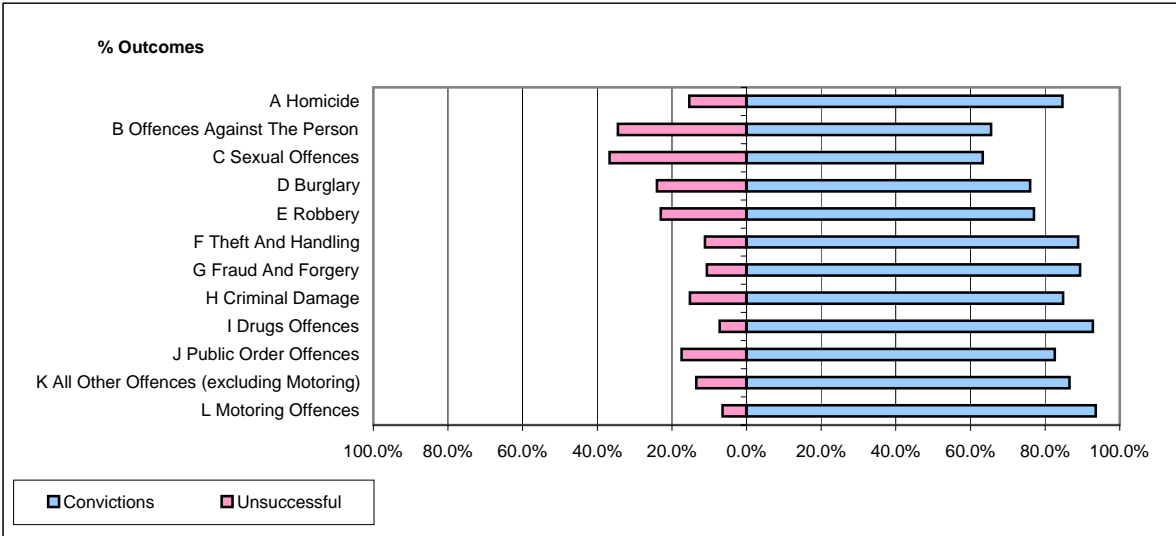


CPS OUTCOMES BY PRINCIPAL OFFENCE CATEGORY

August 2006

P25-Metropolitan&City



	Convictions		Unsuccessful	
	Number of Defendants	%	Number of Defendants	%
A Homicide	11	84.6%	2	15.4%
B Offences Against The Person	1,001	65.6%	526	34.4%
C Sexual Offences	100	63.3%	58	36.7%
D Burglary	241	76.0%	76	24.0%
E Robbery	275	77.0%	82	23.0%
F Theft And Handling	1,526	88.9%	191	11.1%
G Fraud And Forgery	193	89.4%	23	10.6%
H Criminal Damage	351	84.8%	63	15.2%
I Drugs Offences	802	92.8%	62	7.2%
J Public Order Offences	1,023	82.6%	216	17.4%
K All Other Offences (excluding Motoring)	1,162	86.5%	181	13.5%
L Motoring Offences	3,952	93.6%	270	6.4%
Admin Finalisations	0	0.0%	503	100.0%
TOTAL	10,637	82.5%	2,253	17.5%