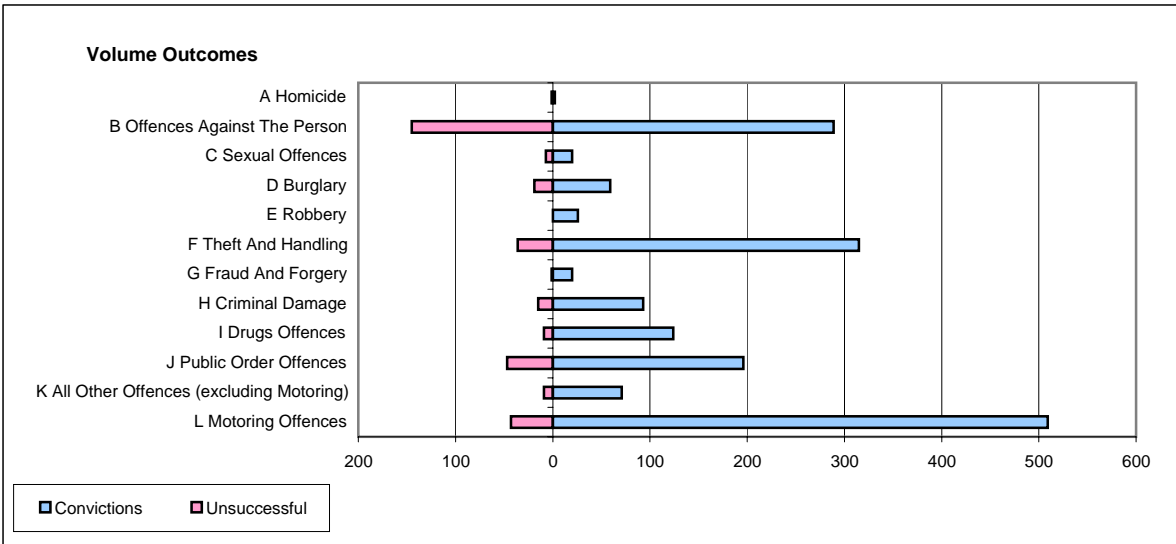
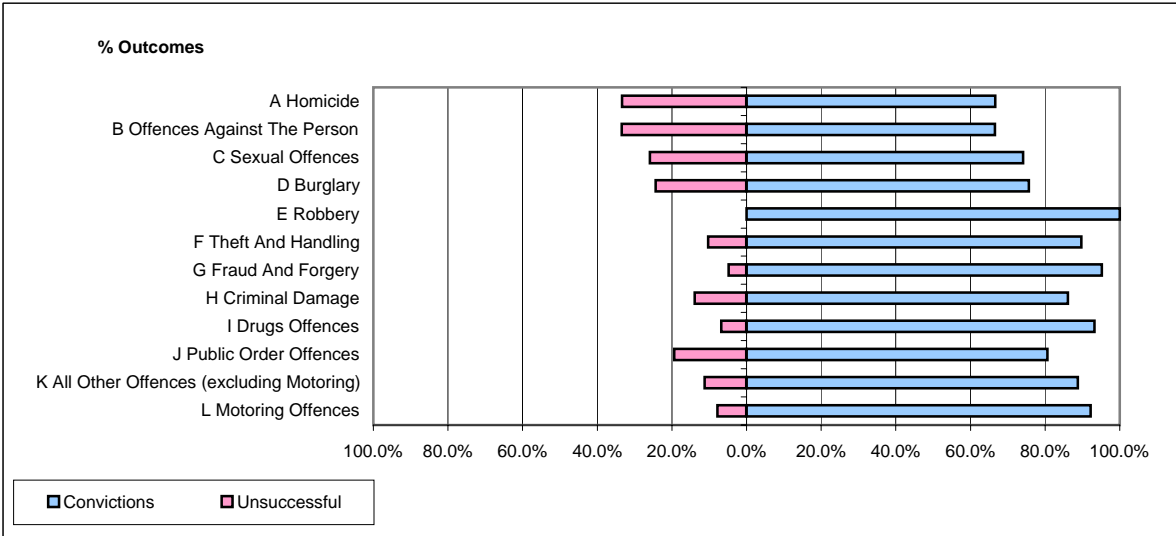


**CPS OUTCOMES BY PRINCIPAL OFFENCE CATEGORY**

**August 2006**

**P24-Merseyside**



	Convictions		Unsuccessful	
	Number of Defendants	%	Number of Defendants	%
<b>A Homicide</b>	<b>2</b>	<b>66.7%</b>	<b>1</b>	<b>33.3%</b>
<b>B Offences Against The Person</b>	<b>289</b>	<b>66.6%</b>	<b>145</b>	<b>33.4%</b>
<b>C Sexual Offences</b>	<b>20</b>	<b>74.1%</b>	<b>7</b>	<b>25.9%</b>
<b>D Burglary</b>	<b>59</b>	<b>75.6%</b>	<b>19</b>	<b>24.4%</b>
<b>E Robbery</b>	<b>26</b>	<b>100.0%</b>	<b>0</b>	<b>0.0%</b>
<b>F Theft And Handling</b>	<b>315</b>	<b>89.7%</b>	<b>36</b>	<b>10.3%</b>
<b>G Fraud And Forgery</b>	<b>20</b>	<b>95.2%</b>	<b>1</b>	<b>4.8%</b>
<b>H Criminal Damage</b>	<b>93</b>	<b>86.1%</b>	<b>15</b>	<b>13.9%</b>
<b>I Drugs Offences</b>	<b>124</b>	<b>93.2%</b>	<b>9</b>	<b>6.8%</b>
<b>J Public Order Offences</b>	<b>196</b>	<b>80.7%</b>	<b>47</b>	<b>19.3%</b>
<b>K All Other Offences (excluding Motoring)</b>	<b>71</b>	<b>88.8%</b>	<b>9</b>	<b>11.3%</b>
<b>L Motoring Offences</b>	<b>509</b>	<b>92.2%</b>	<b>43</b>	<b>7.8%</b>
<b>Admin Finalisations</b>	<b>0</b>	<b>0.0%</b>	<b>57</b>	<b>100.0%</b>
<b>TOTAL</b>	<b>1,724</b>	<b>81.6%</b>	<b>389</b>	<b>18.4%</b>