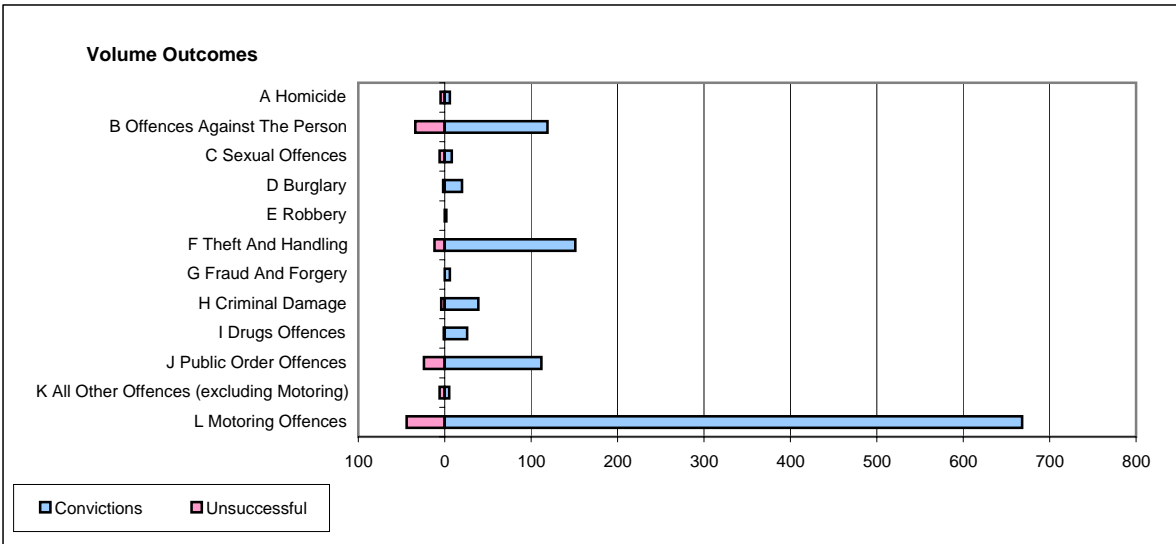
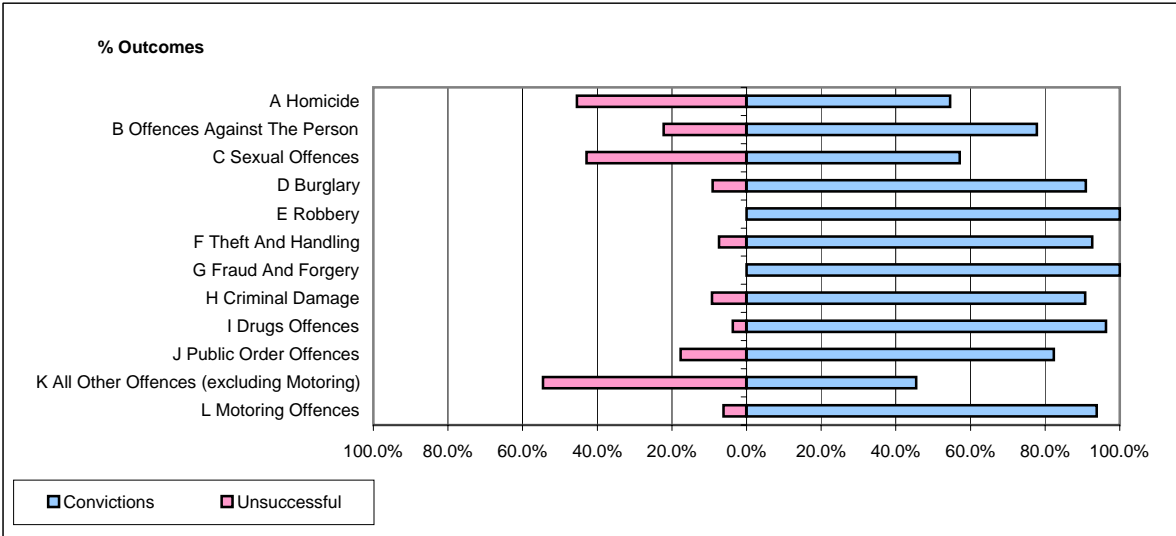


**CPS OUTCOMES BY PRINCIPAL OFFENCE CATEGORY**

**August 2006**

**P23-Lincolnshire**



	Convictions		Unsuccessful	
	Number of Defendants	%	Number of Defendants	%
<b>A Homicide</b>	6	54.5%	5	45.5%
<b>B Offences Against The Person</b>	119	77.8%	34	22.2%
<b>C Sexual Offences</b>	8	57.1%	6	42.9%
<b>D Burglary</b>	20	90.9%	2	9.1%
<b>E Robbery</b>	2	100.0%	0	0.0%
<b>F Theft And Handling</b>	151	92.6%	12	7.4%
<b>G Fraud And Forgery</b>	6	100.0%	0	0.0%
<b>H Criminal Damage</b>	39	90.7%	4	9.3%
<b>I Drugs Offences</b>	26	96.3%	1	3.7%
<b>J Public Order Offences</b>	112	82.4%	24	17.6%
<b>K All Other Offences (excluding Motoring)</b>	5	45.5%	6	54.5%
<b>L Motoring Offences</b>	668	93.8%	44	6.2%
<b>Admin Finalisations</b>	0	0.0%	34	100.0%
<b>TOTAL</b>	<b>1,162</b>	<b>87.1%</b>	<b>172</b>	<b>12.9%</b>