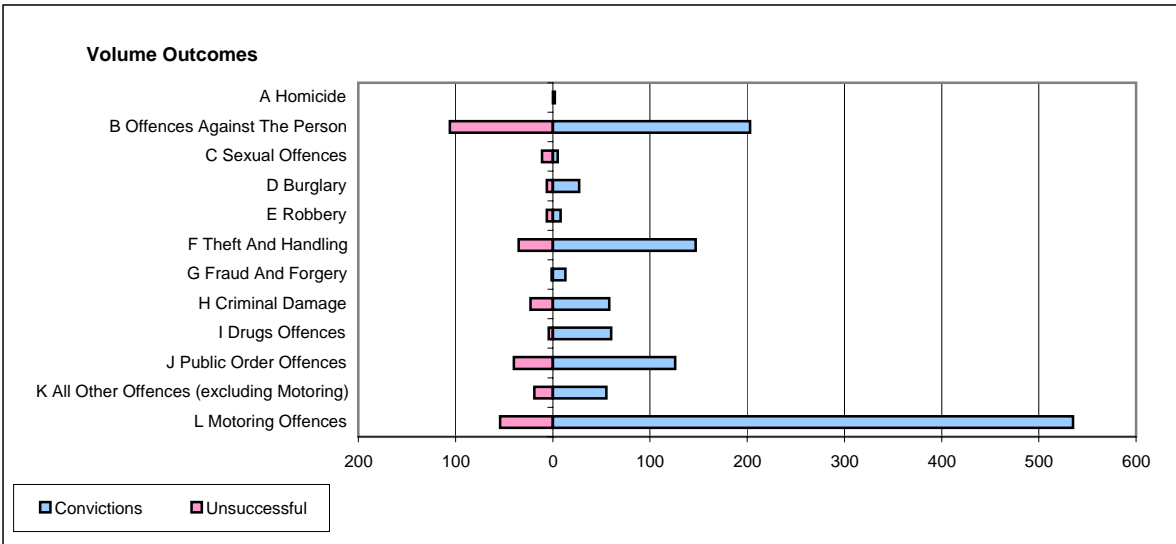
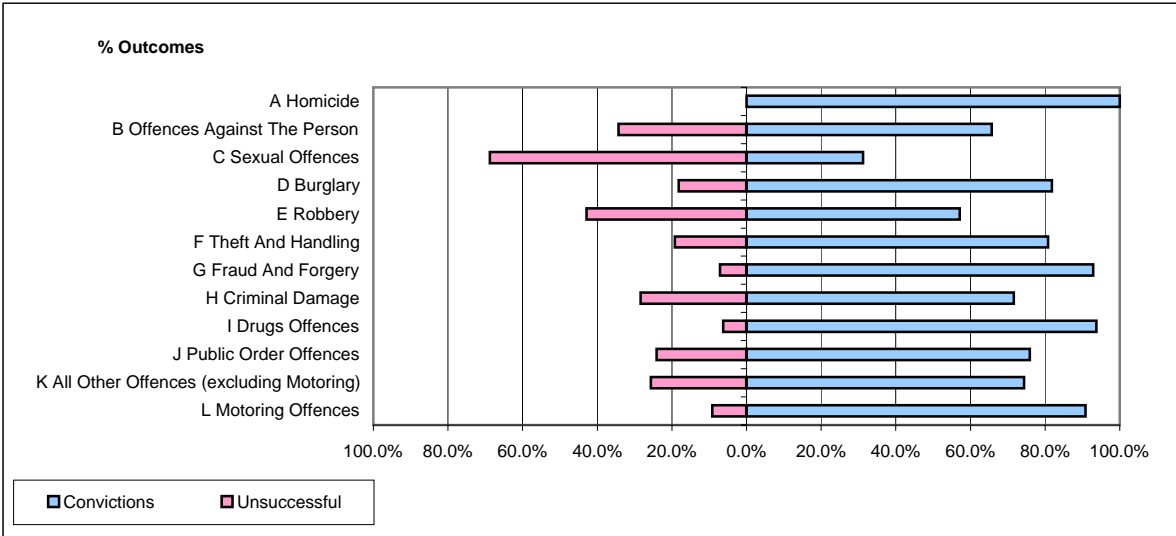


CPS OUTCOMES BY PRINCIPAL OFFENCE CATEGORY

August 2006

P22-Leicestershire



	Convictions		Unsuccessful	
	Number of Defendants	%	Number of Defendants	%
A Homicide	2	100.0%	0	0.0%
B Offences Against The Person	203	65.7%	106	34.3%
C Sexual Offences	5	31.3%	11	68.8%
D Burglary	27	81.8%	6	18.2%
E Robbery	8	57.1%	6	42.9%
F Theft And Handling	147	80.8%	35	19.2%
G Fraud And Forgery	13	92.9%	1	7.1%
H Criminal Damage	58	71.6%	23	28.4%
I Drugs Offences	60	93.8%	4	6.3%
J Public Order Offences	126	75.9%	40	24.1%
K All Other Offences (excluding Motoring)	55	74.3%	19	25.7%
L Motoring Offences	535	90.8%	54	9.2%
Admin Finalisations	0	0.0%	50	100.0%
TOTAL	1,239	77.7%	355	22.3%