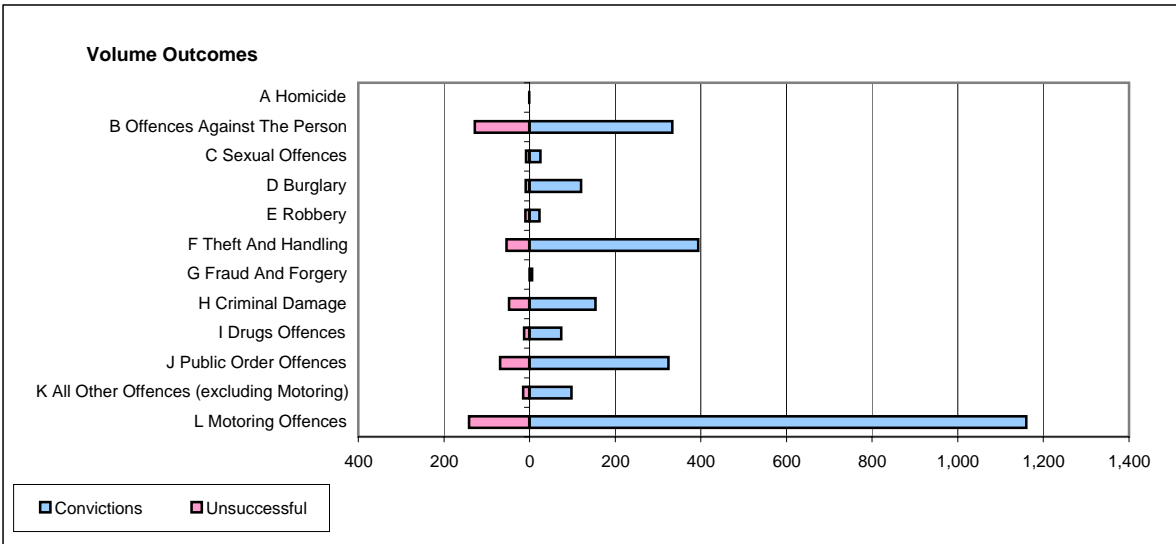
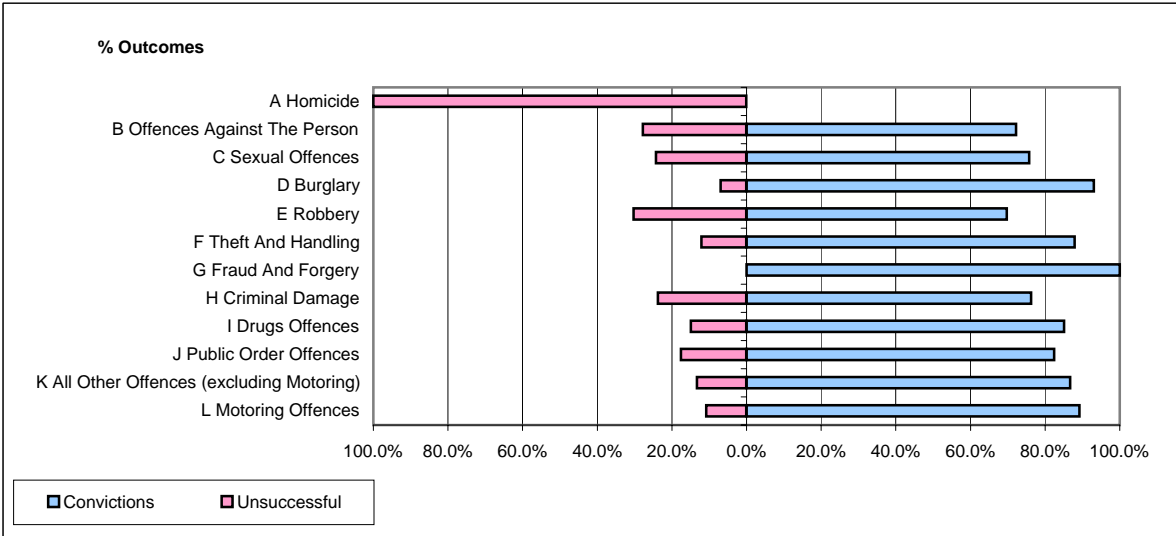


CPS OUTCOMES BY PRINCIPAL OFFENCE CATEGORY

August 2006

P21-Lancashire



	Convictions		Unsuccessful	
	Number of Defendants	%	Number of Defendants	%
A Homicide	0	0.0%	1	100.0%
B Offences Against The Person	333	72.2%	128	27.8%
C Sexual Offences	25	75.8%	8	24.2%
D Burglary	120	93.0%	9	7.0%
E Robbery	23	69.7%	10	30.3%
F Theft And Handling	394	87.9%	54	12.1%
G Fraud And Forgery	6	100.0%	0	0.0%
H Criminal Damage	154	76.2%	48	23.8%
I Drugs Offences	74	85.1%	13	14.9%
J Public Order Offences	324	82.4%	69	17.6%
K All Other Offences (excluding Motoring)	98	86.7%	15	13.3%
L Motoring Offences	1,160	89.2%	141	10.8%
Admin Finalisations	0	0.0%	57	100.0%
TOTAL	2,711	83.1%	553	16.9%