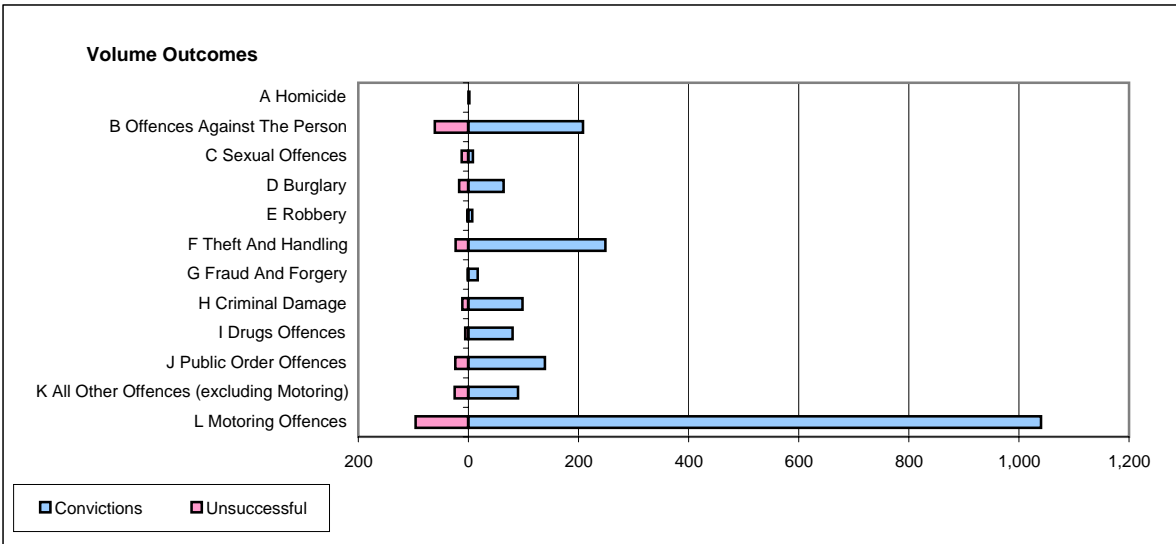
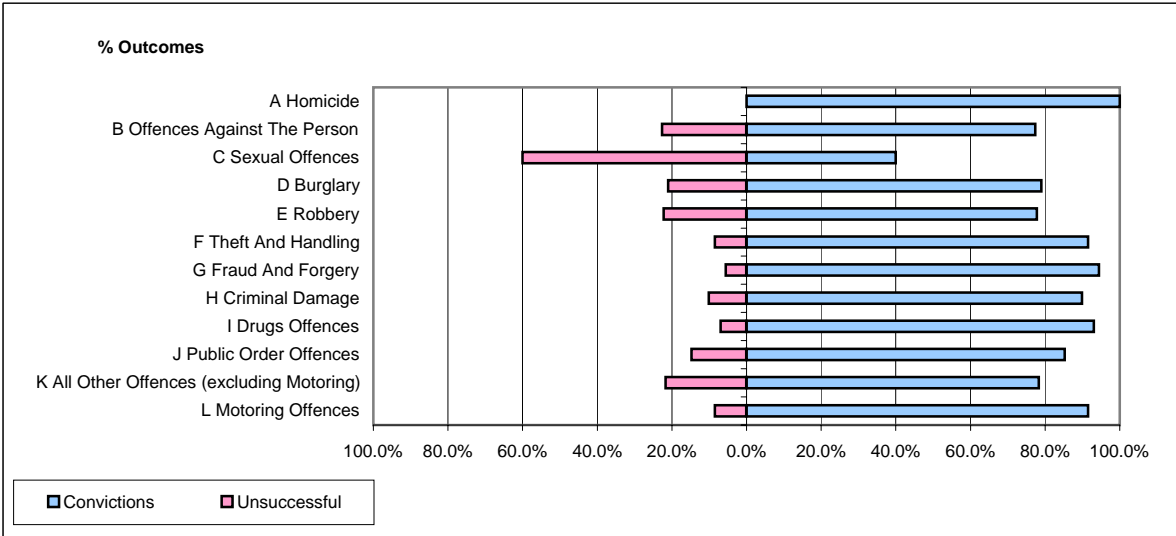


**CPS OUTCOMES BY PRINCIPAL OFFENCE CATEGORY**

**August 2006**

**P20-Kent**



	Convictions		Unsuccessful	
	Number of Defendants	%	Number of Defendants	%
<b>A Homicide</b>	<b>2</b>	<b>100.0%</b>	<b>0</b>	<b>0.0%</b>
<b>B Offences Against The Person</b>	<b>208</b>	<b>77.3%</b>	<b>61</b>	<b>22.7%</b>
<b>C Sexual Offences</b>	<b>8</b>	<b>40.0%</b>	<b>12</b>	<b>60.0%</b>
<b>D Burglary</b>	<b>64</b>	<b>79.0%</b>	<b>17</b>	<b>21.0%</b>
<b>E Robbery</b>	<b>7</b>	<b>77.8%</b>	<b>2</b>	<b>22.2%</b>
<b>F Theft And Handling</b>	<b>249</b>	<b>91.5%</b>	<b>23</b>	<b>8.5%</b>
<b>G Fraud And Forgery</b>	<b>17</b>	<b>94.4%</b>	<b>1</b>	<b>5.6%</b>
<b>H Criminal Damage</b>	<b>98</b>	<b>89.9%</b>	<b>11</b>	<b>10.1%</b>
<b>I Drugs Offences</b>	<b>80</b>	<b>93.0%</b>	<b>6</b>	<b>7.0%</b>
<b>J Public Order Offences</b>	<b>139</b>	<b>85.3%</b>	<b>24</b>	<b>14.7%</b>
<b>K All Other Offences (excluding Motoring)</b>	<b>90</b>	<b>78.3%</b>	<b>25</b>	<b>21.7%</b>
<b>L Motoring Offences</b>	<b>1,040</b>	<b>91.5%</b>	<b>96</b>	<b>8.5%</b>
<b>Admin Finalisations</b>	<b>0</b>	<b>0.0%</b>	<b>35</b>	<b>100.0%</b>
<b>TOTAL</b>	<b>2,002</b>	<b>86.5%</b>	<b>313</b>	<b>13.5%</b>