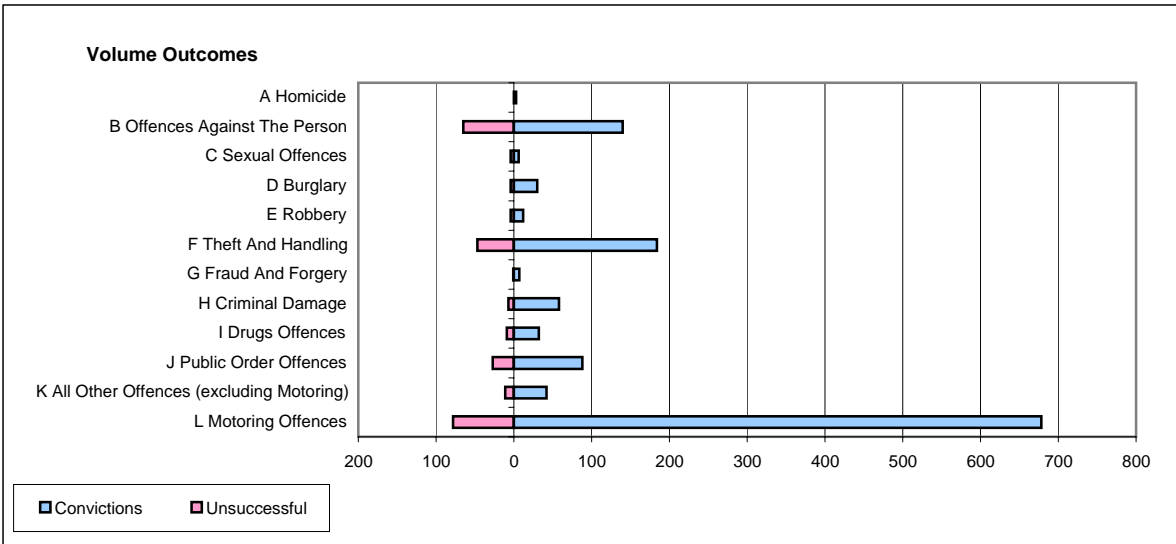
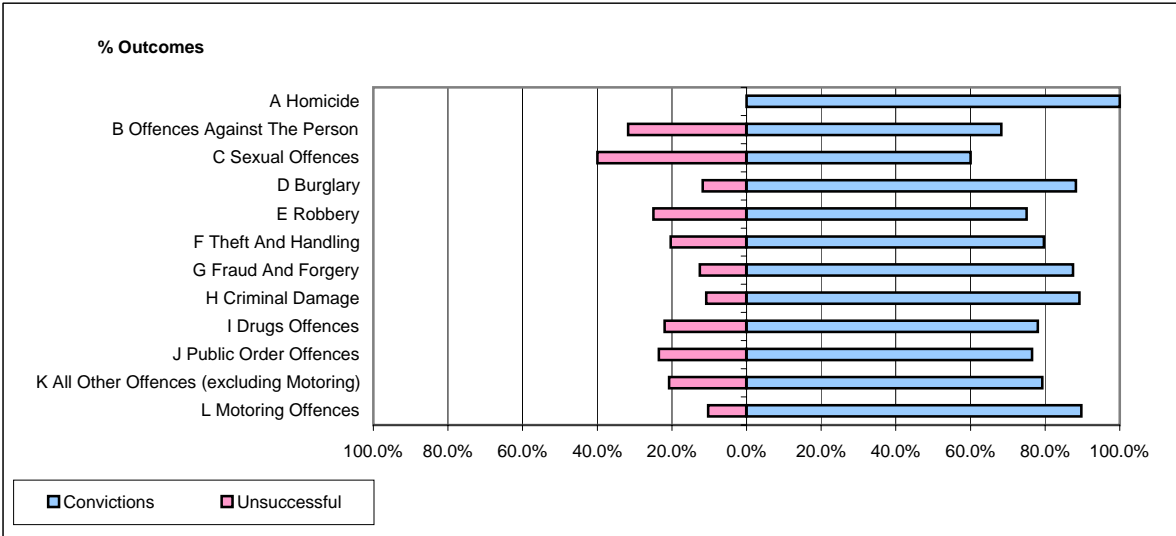


**CPS OUTCOMES BY PRINCIPAL OFFENCE CATEGORY**

**August 2006**

**P18-Hertfordshire**



	Convictions		Unsuccessful	
	Number of Defendants	%	Number of Defendants	%
<b>A Homicide</b>	<b>3</b>	<b>100.0%</b>	<b>0</b>	<b>0.0%</b>
<b>B Offences Against The Person</b>	<b>140</b>	<b>68.3%</b>	<b>65</b>	<b>31.7%</b>
<b>C Sexual Offences</b>	<b>6</b>	<b>60.0%</b>	<b>4</b>	<b>40.0%</b>
<b>D Burglary</b>	<b>30</b>	<b>88.2%</b>	<b>4</b>	<b>11.8%</b>
<b>E Robbery</b>	<b>12</b>	<b>75.0%</b>	<b>4</b>	<b>25.0%</b>
<b>F Theft And Handling</b>	<b>184</b>	<b>79.7%</b>	<b>47</b>	<b>20.3%</b>
<b>G Fraud And Forgery</b>	<b>7</b>	<b>87.5%</b>	<b>1</b>	<b>12.5%</b>
<b>H Criminal Damage</b>	<b>58</b>	<b>89.2%</b>	<b>7</b>	<b>10.8%</b>
<b>I Drugs Offences</b>	<b>32</b>	<b>78.0%</b>	<b>9</b>	<b>22.0%</b>
<b>J Public Order Offences</b>	<b>88</b>	<b>76.5%</b>	<b>27</b>	<b>23.5%</b>
<b>K All Other Offences (excluding Motoring)</b>	<b>42</b>	<b>79.2%</b>	<b>11</b>	<b>20.8%</b>
<b>L Motoring Offences</b>	<b>678</b>	<b>89.7%</b>	<b>78</b>	<b>10.3%</b>
<b>Admin Finalisations</b>	<b>0</b>	<b>0.0%</b>	<b>38</b>	<b>100.0%</b>
<b>TOTAL</b>	<b>1,280</b>	<b>81.3%</b>	<b>295</b>	<b>18.7%</b>