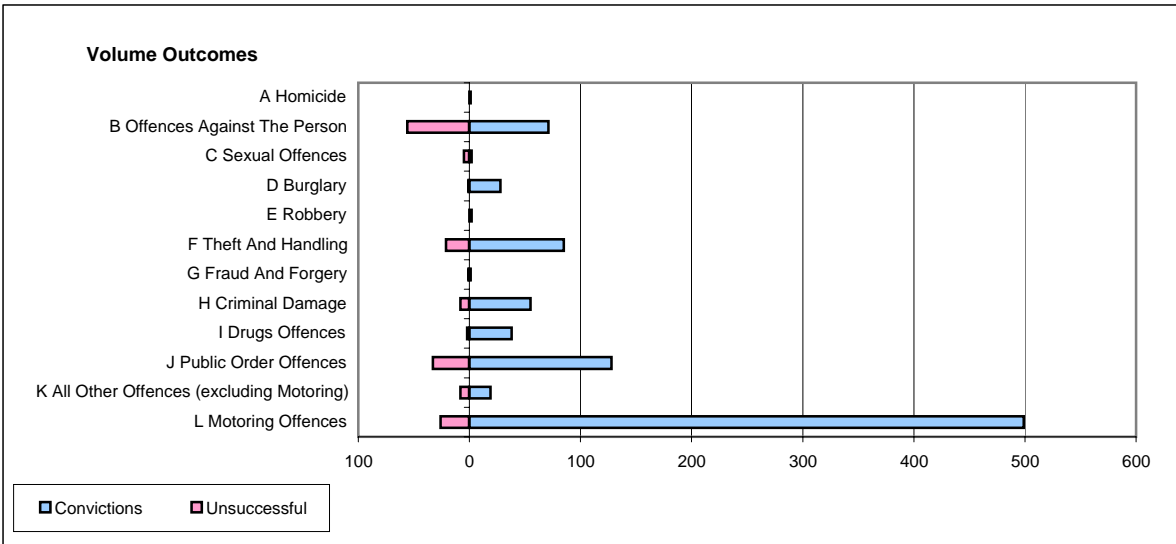
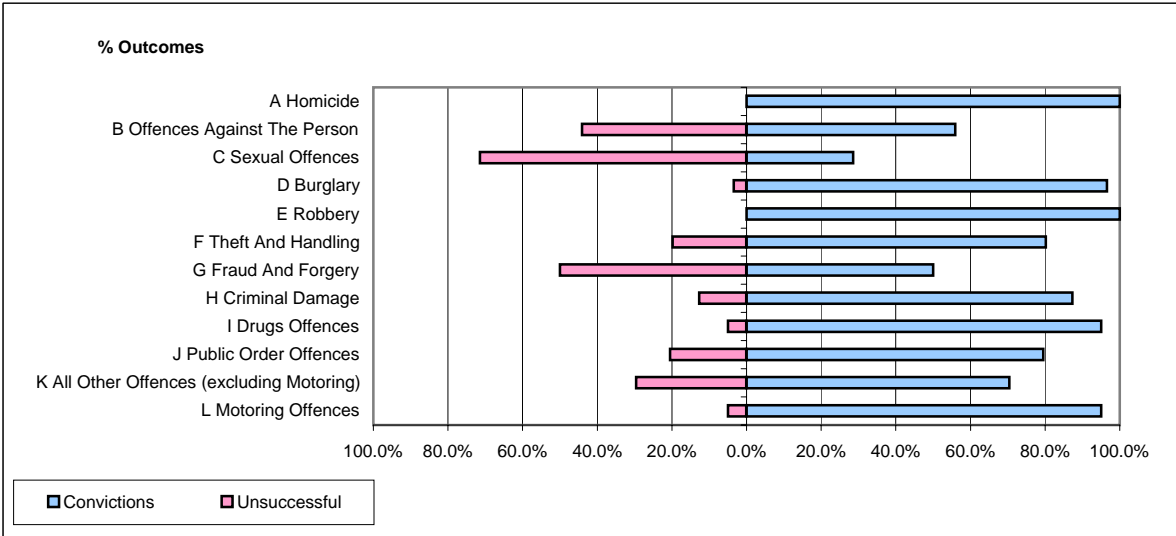


**CPS OUTCOMES BY PRINCIPAL OFFENCE CATEGORY**

**August 2006**

**P16-Gwent**



	Convictions		Unsuccessful	
	Number of Defendants	%	Number of Defendants	%
<b>A Homicide</b>	1	100.0%	0	0.0%
<b>B Offences Against The Person</b>	71	55.9%	56	44.1%
<b>C Sexual Offences</b>	2	28.6%	5	71.4%
<b>D Burglary</b>	28	96.6%	1	3.4%
<b>E Robbery</b>	2	100.0%	0	0.0%
<b>F Theft And Handling</b>	85	80.2%	21	19.8%
<b>G Fraud And Forgery</b>	1	50.0%	1	50.0%
<b>H Criminal Damage</b>	55	87.3%	8	12.7%
<b>I Drugs Offences</b>	38	95.0%	2	5.0%
<b>J Public Order Offences</b>	128	79.5%	33	20.5%
<b>K All Other Offences (excluding Motoring)</b>	19	70.4%	8	29.6%
<b>L Motoring Offences</b>	499	95.0%	26	5.0%
<b>Admin Finalisations</b>	0	0.0%	27	100.0%
<b>TOTAL</b>	929	83.2%	188	16.8%