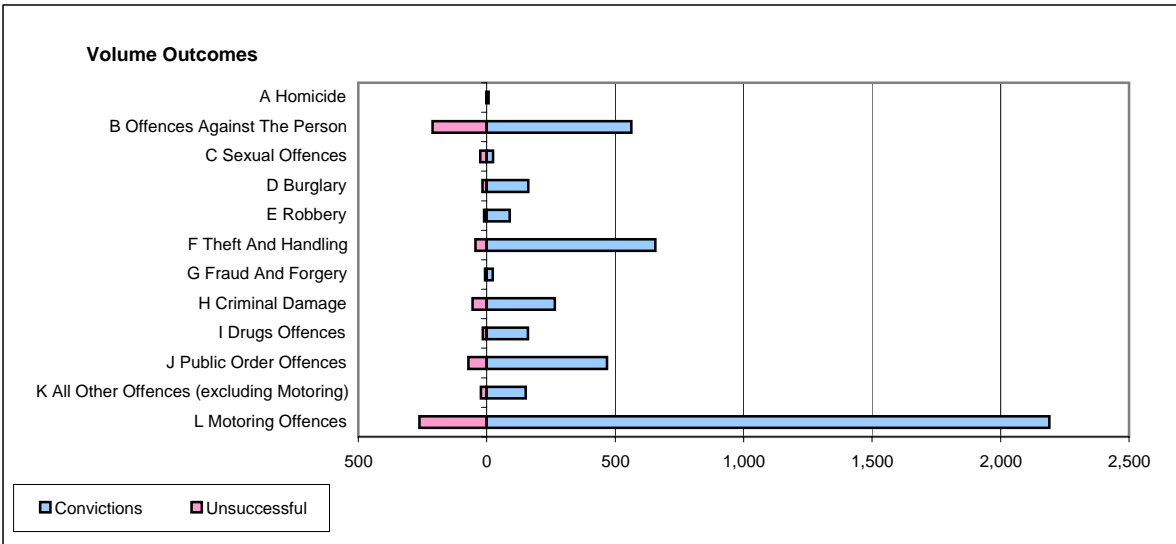
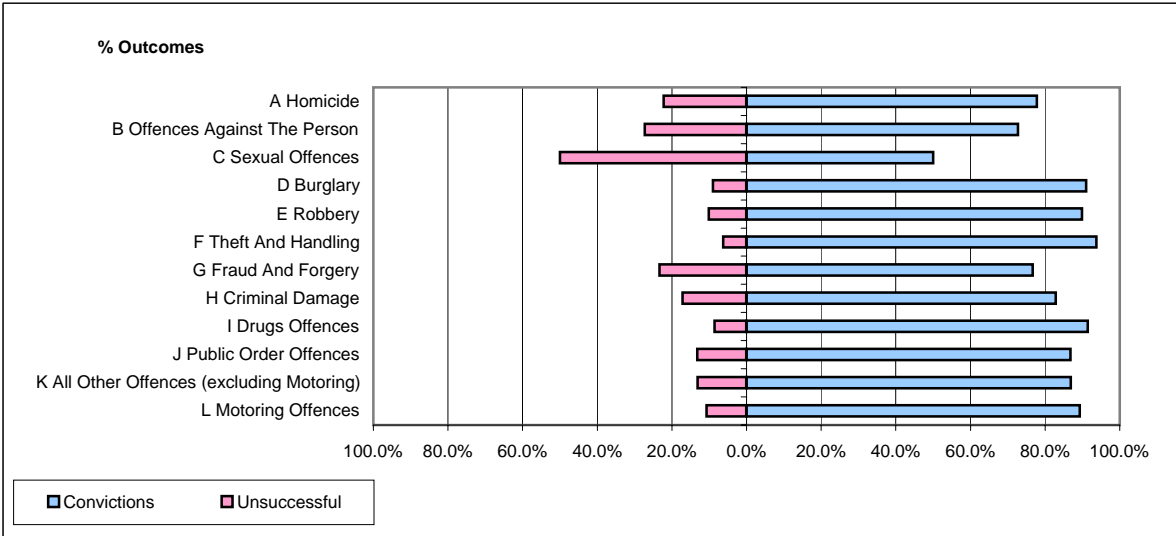


CPS OUTCOMES BY PRINCIPAL OFFENCE CATEGORY

August 2006

P15-GreaterManchester



	Convictions		Unsuccessful	
	Number of Defendants	%	Number of Defendants	%
A Homicide	7	77.8%	2	22.2%
B Offences Against The Person	563	72.7%	211	27.3%
C Sexual Offences	25	50.0%	25	50.0%
D Burglary	162	91.0%	16	9.0%
E Robbery	89	89.9%	10	10.1%
F Theft And Handling	656	93.7%	44	6.3%
G Fraud And Forgery	23	76.7%	7	23.3%
H Criminal Damage	265	82.8%	55	17.2%
I Drugs Offences	160	91.4%	15	8.6%
J Public Order Offences	468	86.8%	71	13.2%
K All Other Offences (excluding Motoring)	152	86.9%	23	13.1%
L Motoring Offences	2,190	89.3%	262	10.7%
Admin Finalisations	0	0.0%	227	100.0%
TOTAL	4,760	83.1%	968	16.9%