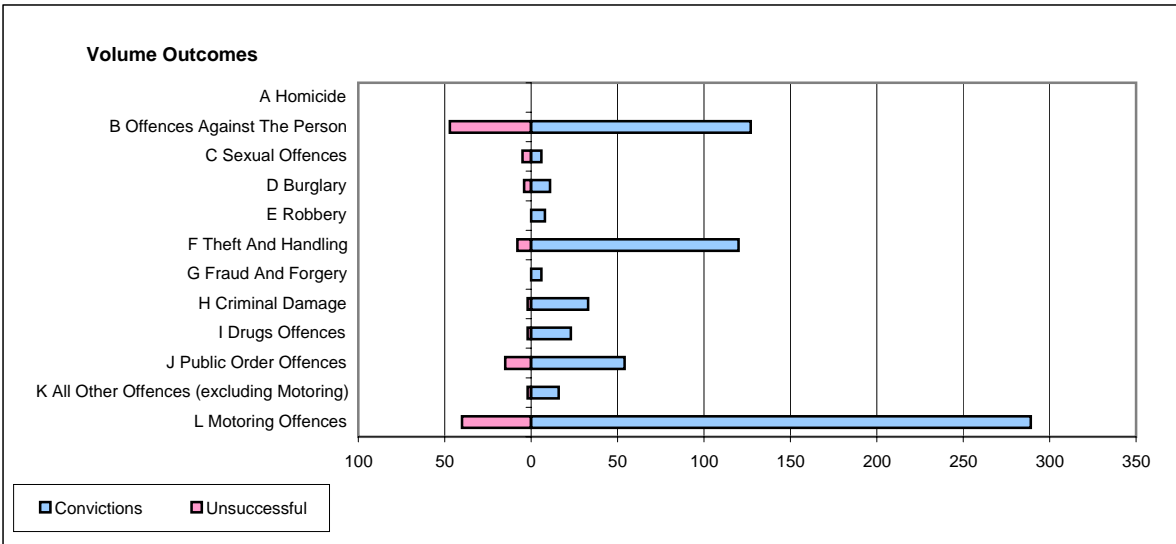
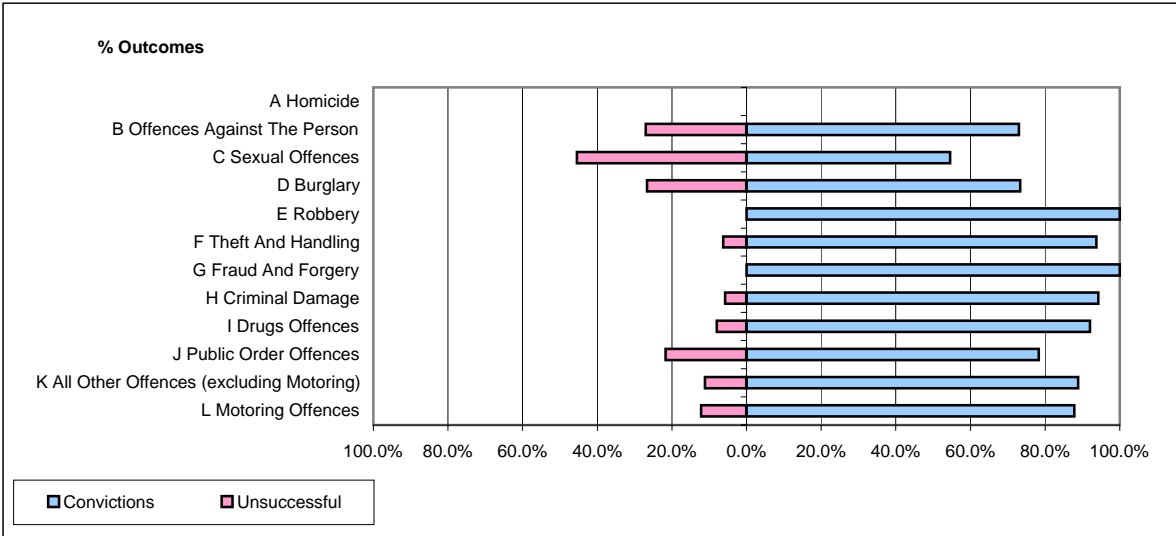


**CPS OUTCOMES BY PRINCIPAL OFFENCE CATEGORY**

**August 2006**

**P14-Gloucestershire**



	Convictions		Unsuccessful	
	Number of Defendants	%	Number of Defendants	%
<b>A Homicide</b>	<b>0</b>	<b>#DIV/0!</b>	<b>0</b>	<b>#DIV/0!</b>
<b>B Offences Against The Person</b>	<b>127</b>	<b>73.0%</b>	<b>47</b>	<b>27.0%</b>
<b>C Sexual Offences</b>	<b>6</b>	<b>54.5%</b>	<b>5</b>	<b>45.5%</b>
<b>D Burglary</b>	<b>11</b>	<b>73.3%</b>	<b>4</b>	<b>26.7%</b>
<b>E Robbery</b>	<b>8</b>	<b>100.0%</b>	<b>0</b>	<b>0.0%</b>
<b>F Theft And Handling</b>	<b>120</b>	<b>93.8%</b>	<b>8</b>	<b>6.3%</b>
<b>G Fraud And Forgery</b>	<b>6</b>	<b>100.0%</b>	<b>0</b>	<b>0.0%</b>
<b>H Criminal Damage</b>	<b>33</b>	<b>94.3%</b>	<b>2</b>	<b>5.7%</b>
<b>I Drugs Offences</b>	<b>23</b>	<b>92.0%</b>	<b>2</b>	<b>8.0%</b>
<b>J Public Order Offences</b>	<b>54</b>	<b>78.3%</b>	<b>15</b>	<b>21.7%</b>
<b>K All Other Offences (excluding Motoring)</b>	<b>16</b>	<b>88.9%</b>	<b>2</b>	<b>11.1%</b>
<b>L Motoring Offences</b>	<b>289</b>	<b>87.8%</b>	<b>40</b>	<b>12.2%</b>
<b>Admin Finalisations</b>	<b>0</b>	<b>0.0%</b>	<b>24</b>	<b>100.0%</b>
<b>TOTAL</b>	<b>693</b>	<b>82.3%</b>	<b>149</b>	<b>17.7%</b>