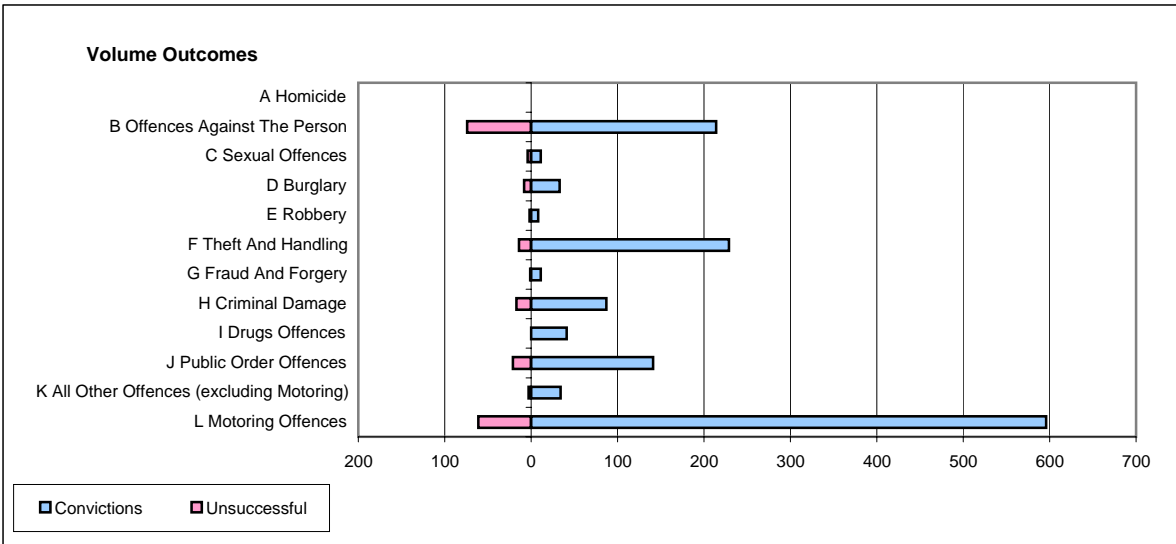
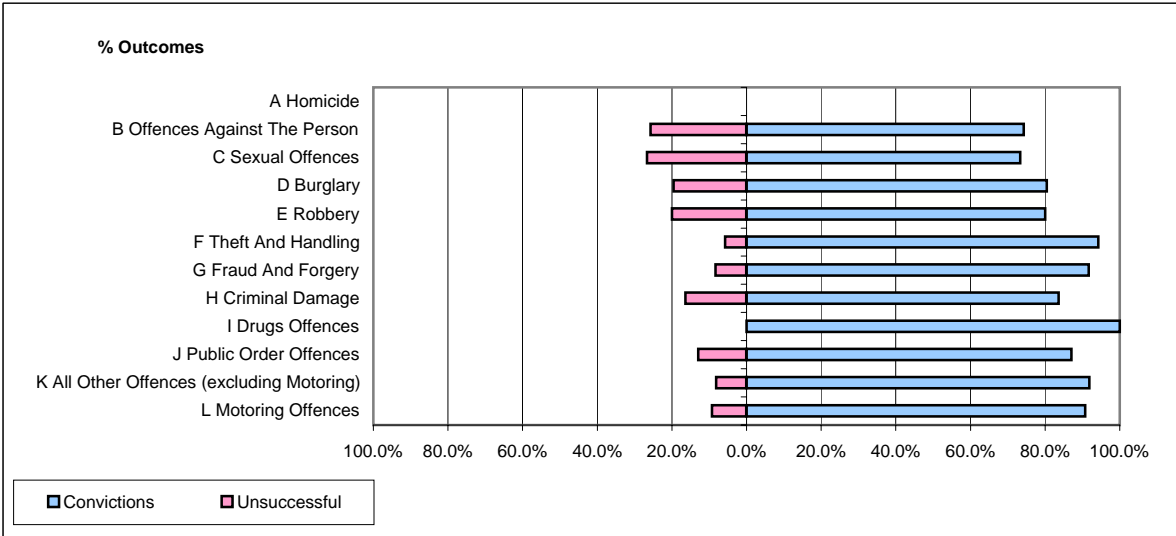


CPS OUTCOMES BY PRINCIPAL OFFENCE CATEGORY

August 2006

P04-Cheshire



	Convictions		Unsuccessful	
	Number of Defendants	%	Number of Defendants	%
A Homicide	0	#DIV/0!	0	#DIV/0!
B Offences Against The Person	214	74.3%	74	25.7%
C Sexual Offences	11	73.3%	4	26.7%
D Burglary	33	80.5%	8	19.5%
E Robbery	8	80.0%	2	20.0%
F Theft And Handling	229	94.2%	14	5.8%
G Fraud And Forgery	11	91.7%	1	8.3%
H Criminal Damage	87	83.7%	17	16.3%
I Drugs Offences	41	100.0%	0	0.0%
J Public Order Offences	141	87.0%	21	13.0%
K All Other Offences (excluding Motoring)	34	91.9%	3	8.1%
L Motoring Offences	596	90.7%	61	9.3%
Admin Finalisations	0	0.0%	25	100.0%
TOTAL	1,405	85.9%	230	14.1%