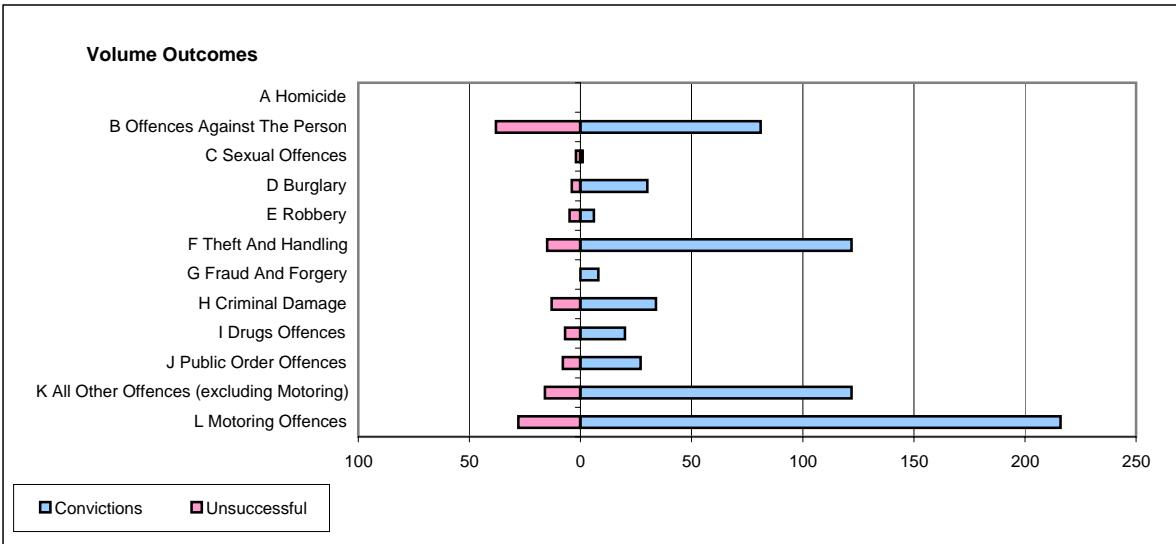
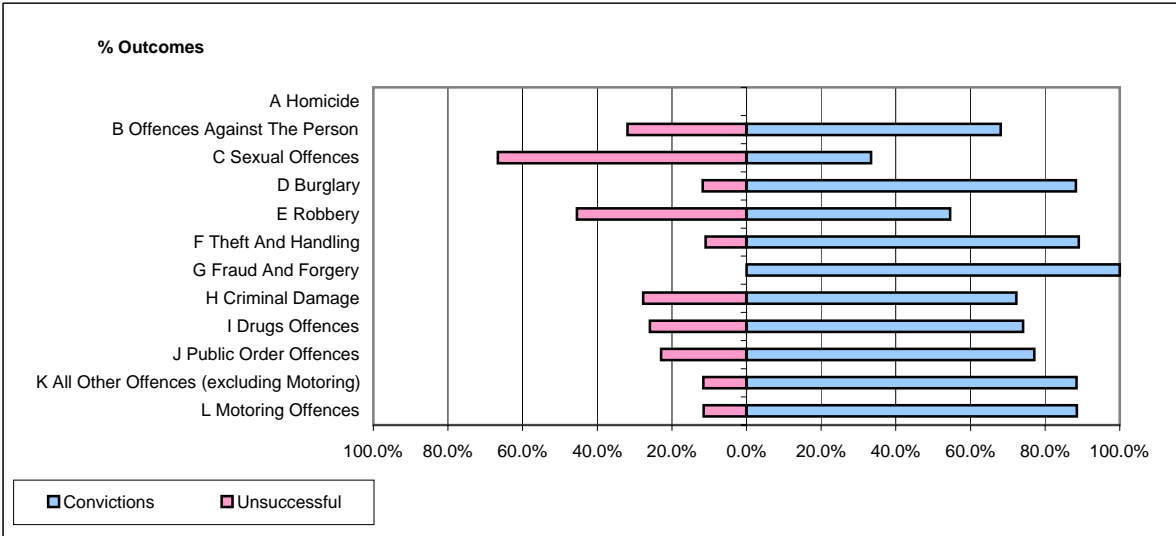


CPS OUTCOMES BY PRINCIPAL OFFENCE CATEGORY

August 2006

P02-Bedfordshire



	Convictions		Unsuccessful	
	Number of Defendants	%	Number of Defendants	%
A Homicide	0	#DIV/0!	0	#DIV/0!
B Offences Against The Person	81	68.1%	38	31.9%
C Sexual Offences	1	33.3%	2	66.7%
D Burglary	30	88.2%	4	11.8%
E Robbery	6	54.5%	5	45.5%
F Theft And Handling	122	89.1%	15	10.9%
G Fraud And Forgery	8	100.0%	0	0.0%
H Criminal Damage	34	72.3%	13	27.7%
I Drugs Offences	20	74.1%	7	25.9%
J Public Order Offences	27	77.1%	8	22.9%
K All Other Offences (excluding Motoring)	122	88.4%	16	11.6%
L Motoring Offences	216	88.5%	28	11.5%
Admin Finalisations	0	0.0%	25	100.0%
TOTAL	667	80.6%	161	19.4%