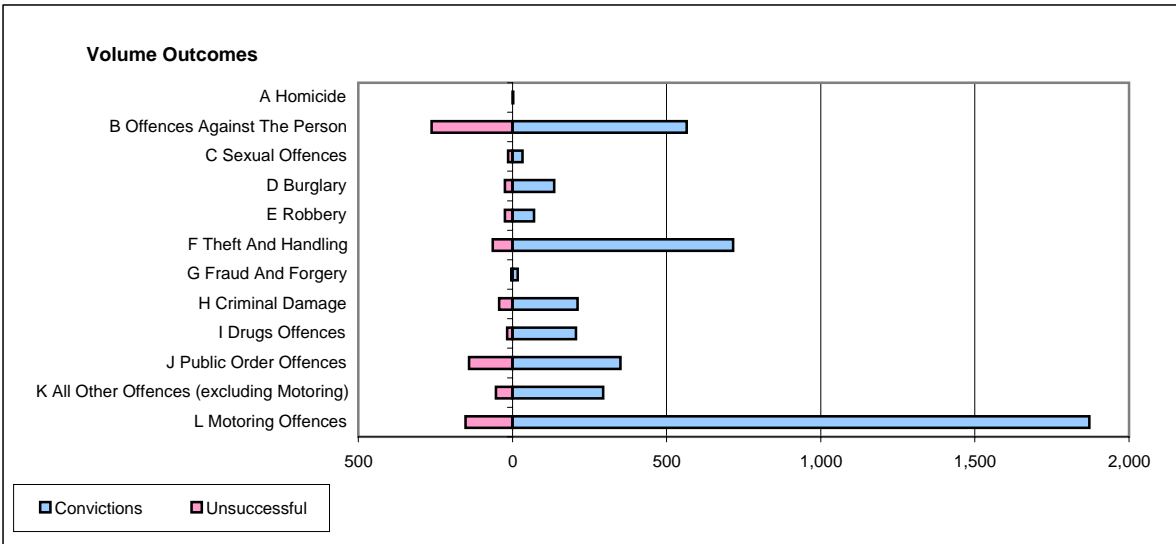
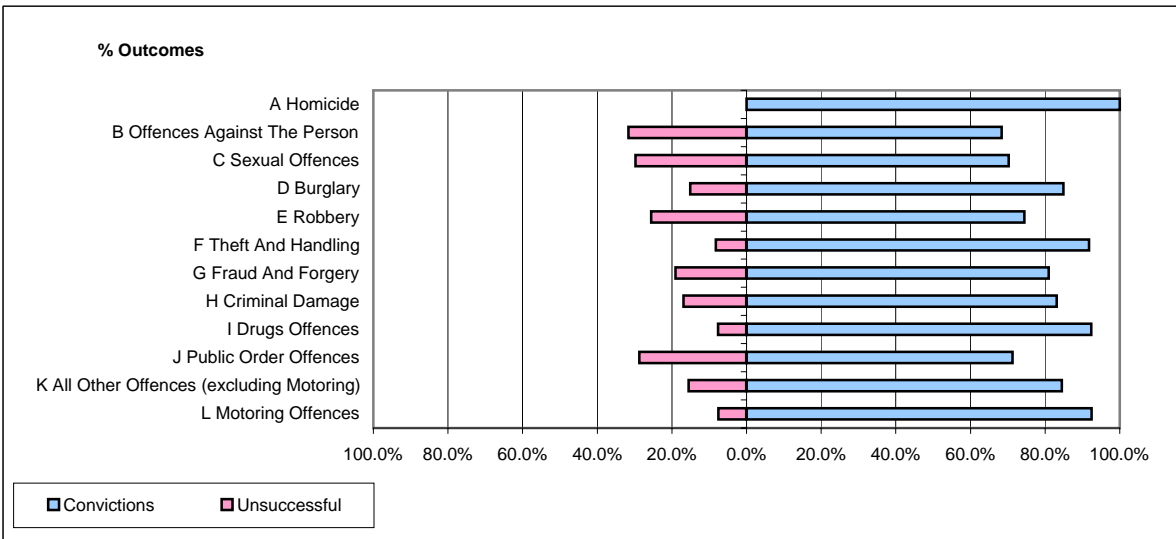


CPS OUTCOMES BY PRINCIPAL OFFENCE CATEGORY

July 2006

P41-WestMidlands



	Convictions		Unsuccessful	
	Number of Defendants	%	Number of Defendants	%
A Homicide	3	100.0%	0	0.0%
B Offences Against The Person	565	68.3%	262	31.7%
C Sexual Offences	33	70.2%	14	29.8%
D Burglary	135	84.9%	24	15.1%
E Robbery	70	74.5%	24	25.5%
F Theft And Handling	716	91.8%	64	8.2%
G Fraud And Forgery	17	81.0%	4	19.0%
H Criminal Damage	211	83.1%	43	16.9%
I Drugs Offences	206	92.4%	17	7.6%
J Public Order Offences	350	71.3%	141	28.7%
K All Other Offences (excluding Motoring)	294	84.5%	54	15.5%
L Motoring Offences	1,871	92.5%	152	7.5%
Admin Finalisations	0	0.0%	146	100.0%
TOTAL	4,471	82.6%	945	17.4%