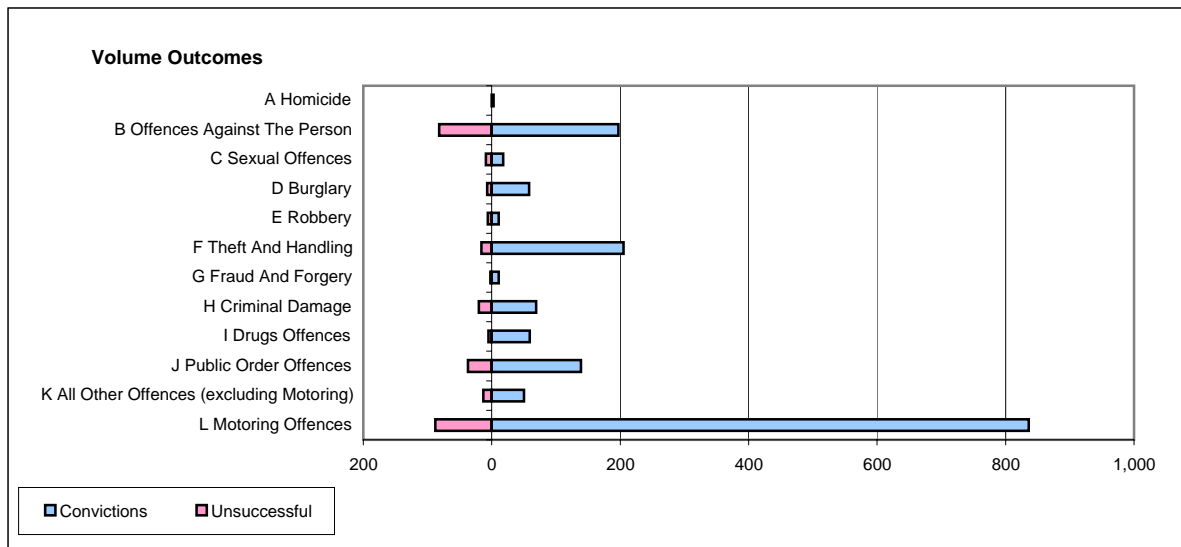
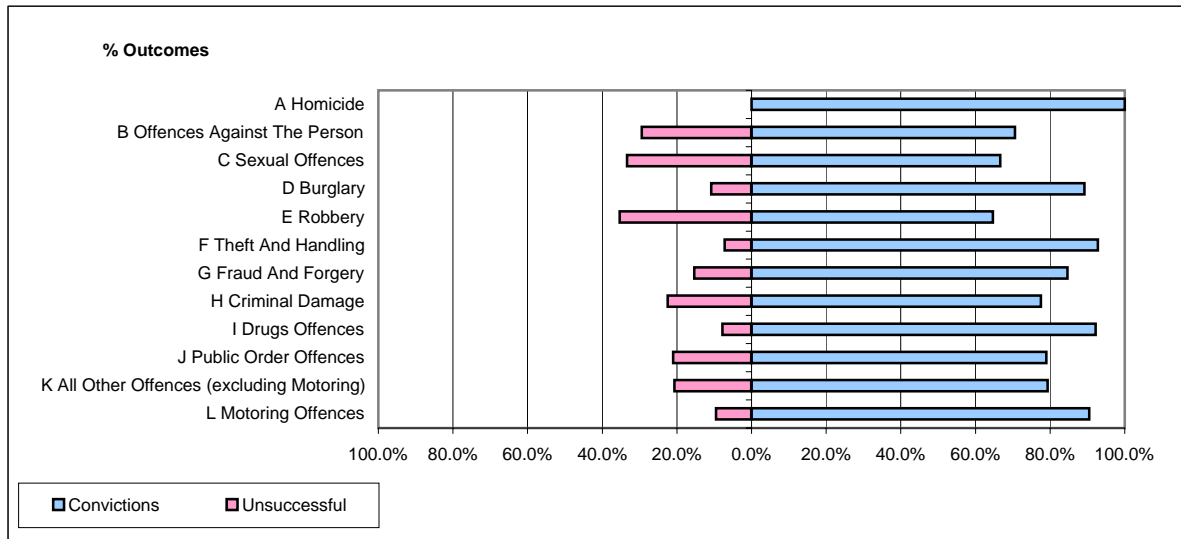


CPS OUTCOMES BY PRINCIPAL OFFENCE CATEGORY

July 2006

P40-WestMercia



	Convictions		Unsuccessful	
	Number of Defendants	%	Number of Defendants	%
A Homicide	3	100.0%	0	0.0%
B Offences Against The Person	197	70.6%	82	29.4%
C Sexual Offences	18	66.7%	9	33.3%
D Burglary	58	89.2%	7	10.8%
E Robbery	11	64.7%	6	35.3%
F Theft And Handling	205	92.8%	16	7.2%
G Fraud And Forgery	11	84.6%	2	15.4%
H Criminal Damage	69	77.5%	20	22.5%
I Drugs Offences	59	92.2%	5	7.8%
J Public Order Offences	139	79.0%	37	21.0%
K All Other Offences (excluding Motoring)	50	79.4%	13	20.6%
L Motoring Offences	836	90.5%	88	9.5%
Admin Finalisations	0	0.0%	31	100.0%
TOTAL	1,656	84.0%	316	16.0%