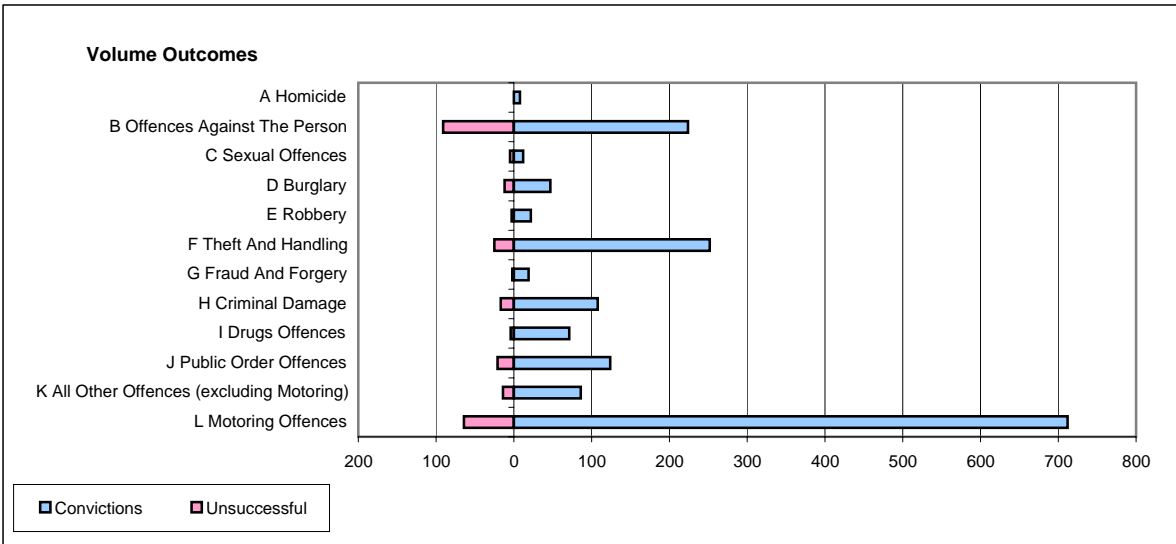
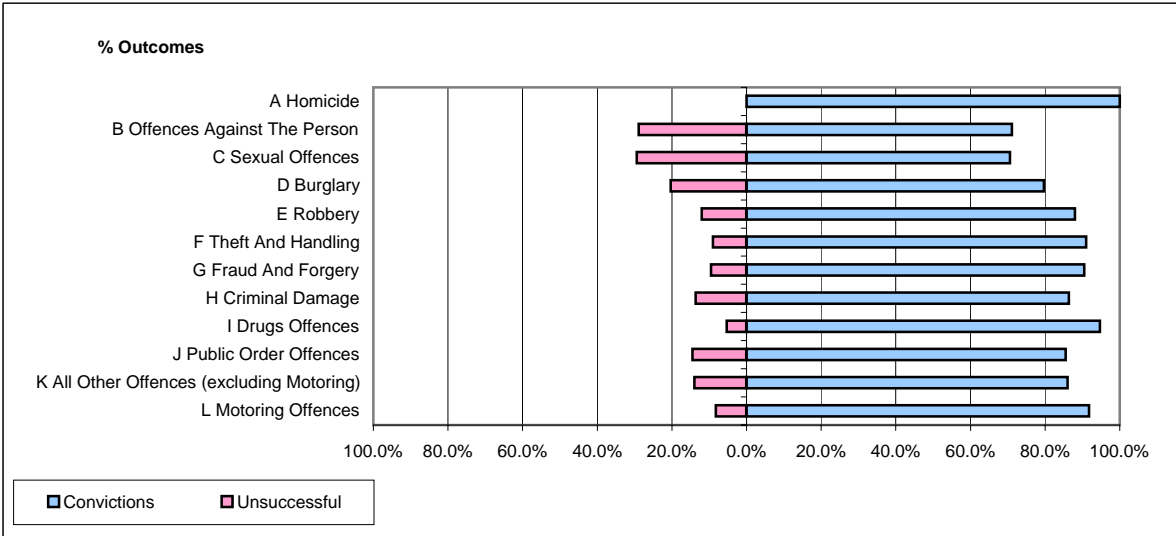


**CPS OUTCOMES BY PRINCIPAL OFFENCE CATEGORY**

**July 2006**

**P37-Sussex**



	Convictions		Unsuccessful	
	Number of Defendants	%	Number of Defendants	%
<b>A Homicide</b>	<b>8</b>	<b>100.0%</b>	<b>0</b>	<b>0.0%</b>
<b>B Offences Against The Person</b>	<b>224</b>	<b>71.1%</b>	<b>91</b>	<b>28.9%</b>
<b>C Sexual Offences</b>	<b>12</b>	<b>70.6%</b>	<b>5</b>	<b>29.4%</b>
<b>D Burglary</b>	<b>47</b>	<b>79.7%</b>	<b>12</b>	<b>20.3%</b>
<b>E Robbery</b>	<b>22</b>	<b>88.0%</b>	<b>3</b>	<b>12.0%</b>
<b>F Theft And Handling</b>	<b>252</b>	<b>91.0%</b>	<b>25</b>	<b>9.0%</b>
<b>G Fraud And Forgery</b>	<b>19</b>	<b>90.5%</b>	<b>2</b>	<b>9.5%</b>
<b>H Criminal Damage</b>	<b>108</b>	<b>86.4%</b>	<b>17</b>	<b>13.6%</b>
<b>I Drugs Offences</b>	<b>71</b>	<b>94.7%</b>	<b>4</b>	<b>5.3%</b>
<b>J Public Order Offences</b>	<b>124</b>	<b>85.5%</b>	<b>21</b>	<b>14.5%</b>
<b>K All Other Offences (excluding Motoring)</b>	<b>86</b>	<b>86.0%</b>	<b>14</b>	<b>14.0%</b>
<b>L Motoring Offences</b>	<b>712</b>	<b>91.8%</b>	<b>64</b>	<b>8.2%</b>
<b>Admin Finalisations</b>	<b>0</b>	<b>0.0%</b>	<b>70</b>	<b>100.0%</b>
<b>TOTAL</b>	<b>1,685</b>	<b>83.7%</b>	<b>328</b>	<b>16.3%</b>