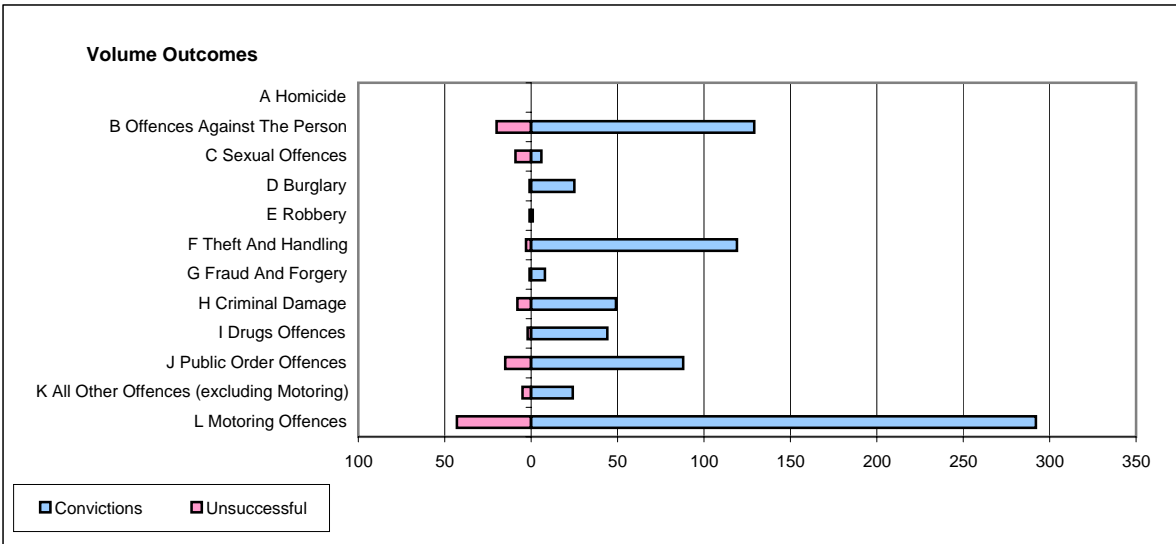
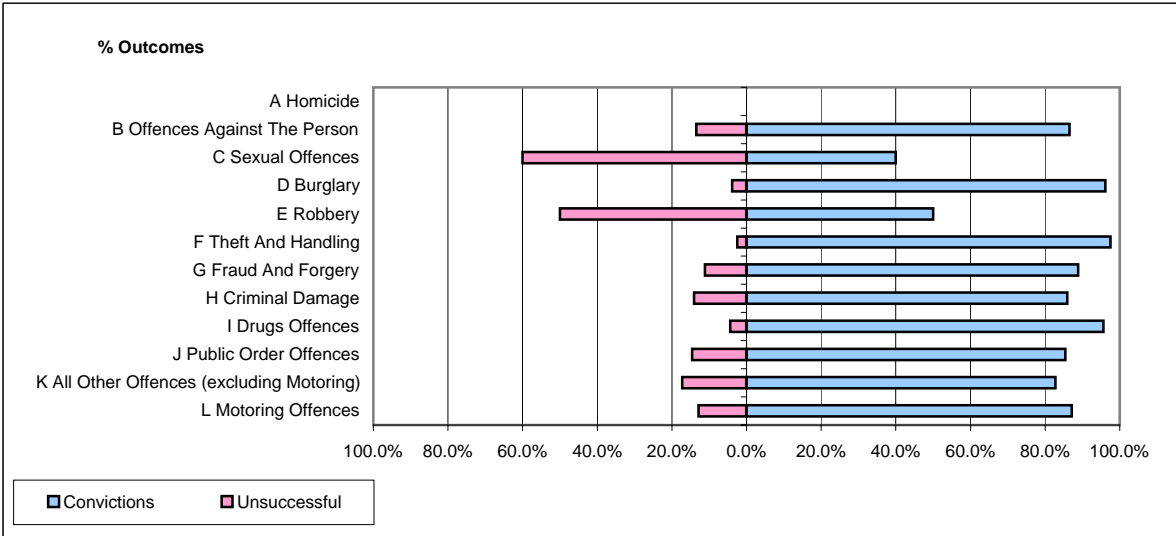


CPS OUTCOMES BY PRINCIPAL OFFENCE CATEGORY

July 2006

P35-Suffolk



	Convictions		Unsuccessful	
	Number of Defendants	%	Number of Defendants	%
A Homicide	0	#DIV/0!	0	#DIV/0!
B Offences Against The Person	129	86.6%	20	13.4%
C Sexual Offences	6	40.0%	9	60.0%
D Burglary	25	96.2%	1	3.8%
E Robbery	1	50.0%	1	50.0%
F Theft And Handling	119	97.5%	3	2.5%
G Fraud And Forgery	8	88.9%	1	11.1%
H Criminal Damage	49	86.0%	8	14.0%
I Drugs Offences	44	95.7%	2	4.3%
J Public Order Offences	88	85.4%	15	14.6%
K All Other Offences (excluding Motoring)	24	82.8%	5	17.2%
L Motoring Offences	292	87.2%	43	12.8%
Admin Finalisations	0	0.0%	35	100.0%
TOTAL	785	84.6%	143	15.4%