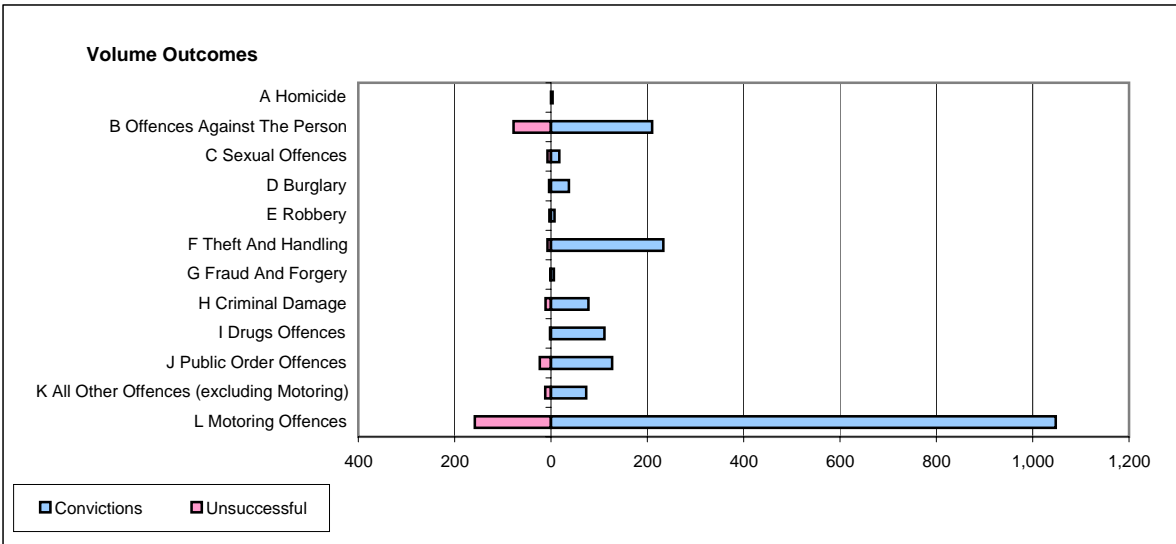
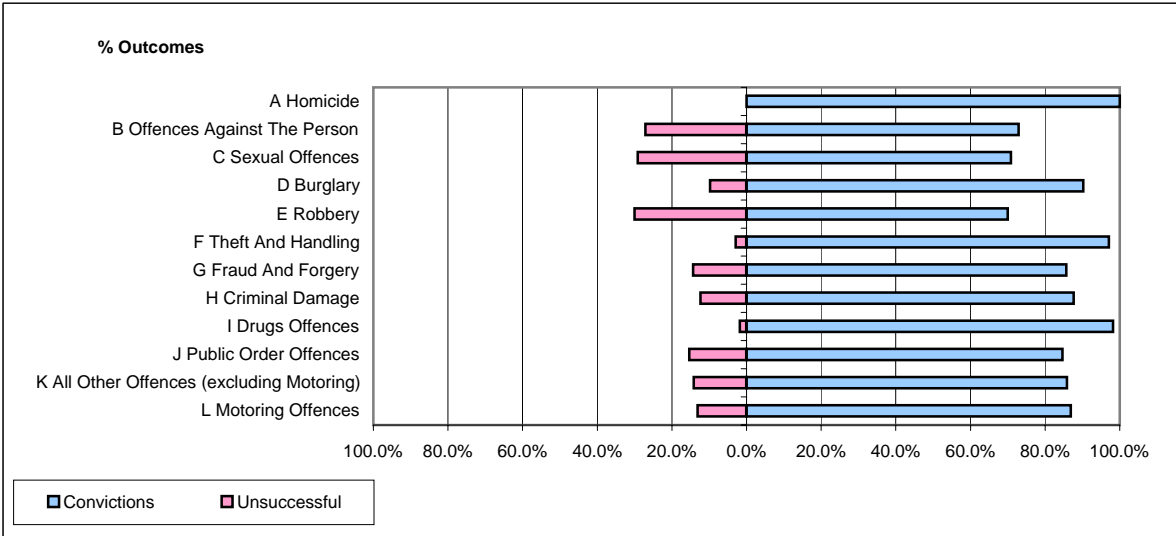


CPS OUTCOMES BY PRINCIPAL OFFENCE CATEGORY

July 2006

P32-SouthWales



	Convictions		Unsuccessful	
	Number of Defendants	%	Number of Defendants	%
A Homicide	3	100.0%	0	0.0%
B Offences Against The Person	210	72.9%	78	27.1%
C Sexual Offences	17	70.8%	7	29.2%
D Burglary	37	90.2%	4	9.8%
E Robbery	7	70.0%	3	30.0%
F Theft And Handling	233	97.1%	7	2.9%
G Fraud And Forgery	6	85.7%	1	14.3%
H Criminal Damage	78	87.6%	11	12.4%
I Drugs Offences	111	98.2%	2	1.8%
J Public Order Offences	127	84.7%	23	15.3%
K All Other Offences (excluding Motoring)	73	85.9%	12	14.1%
L Motoring Offences	1,048	86.9%	158	13.1%
Admin Finalisations	0	0.0%	101	100.0%
TOTAL	1,950	82.7%	407	17.3%