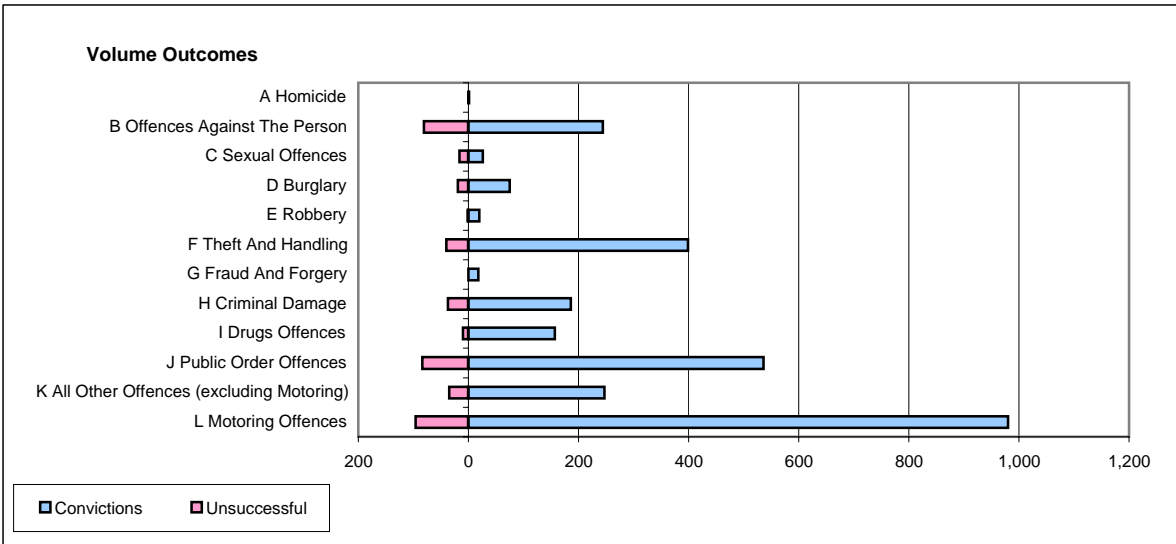
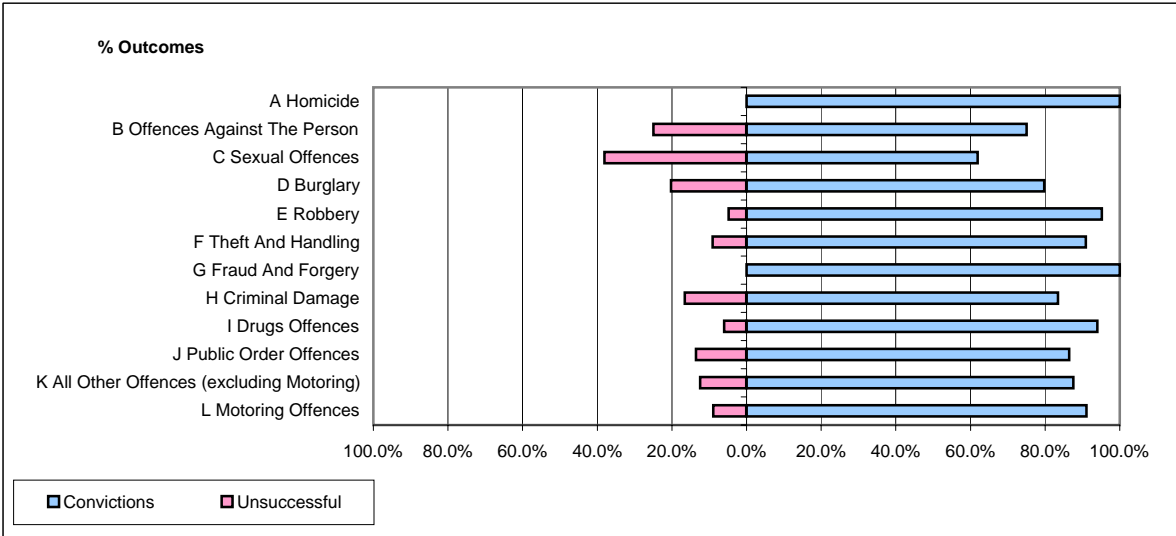


**CPS OUTCOMES BY PRINCIPAL OFFENCE CATEGORY**

July 2006

**P28-Northumbria**



	Convictions		Unsuccessful	
	Number of Defendants	%	Number of Defendants	%
<b>A Homicide</b>	<b>1</b>	<b>100.0%</b>	<b>0</b>	<b>0.0%</b>
<b>B Offences Against The Person</b>	<b>244</b>	<b>75.1%</b>	<b>81</b>	<b>24.9%</b>
<b>C Sexual Offences</b>	<b>26</b>	<b>61.9%</b>	<b>16</b>	<b>38.1%</b>
<b>D Burglary</b>	<b>75</b>	<b>79.8%</b>	<b>19</b>	<b>20.2%</b>
<b>E Robbery</b>	<b>20</b>	<b>95.2%</b>	<b>1</b>	<b>4.8%</b>
<b>F Theft And Handling</b>	<b>399</b>	<b>90.9%</b>	<b>40</b>	<b>9.1%</b>
<b>G Fraud And Forgery</b>	<b>18</b>	<b>100.0%</b>	<b>0</b>	<b>0.0%</b>
<b>H Criminal Damage</b>	<b>186</b>	<b>83.4%</b>	<b>37</b>	<b>16.6%</b>
<b>I Drugs Offences</b>	<b>157</b>	<b>94.0%</b>	<b>10</b>	<b>6.0%</b>
<b>J Public Order Offences</b>	<b>536</b>	<b>86.5%</b>	<b>84</b>	<b>13.5%</b>
<b>K All Other Offences (excluding Motoring)</b>	<b>247</b>	<b>87.6%</b>	<b>35</b>	<b>12.4%</b>
<b>L Motoring Offences</b>	<b>980</b>	<b>91.1%</b>	<b>96</b>	<b>8.9%</b>
<b>Admin Finalisations</b>	<b>0</b>	<b>0.0%</b>	<b>82</b>	<b>100.0%</b>
<b>TOTAL</b>	<b>2,889</b>	<b>85.2%</b>	<b>501</b>	<b>14.8%</b>