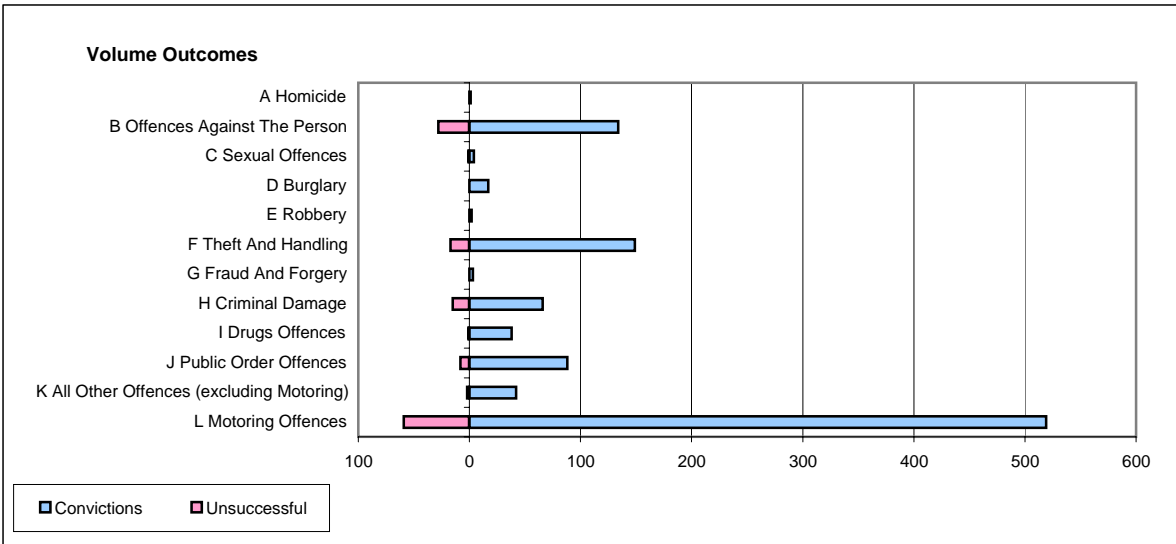
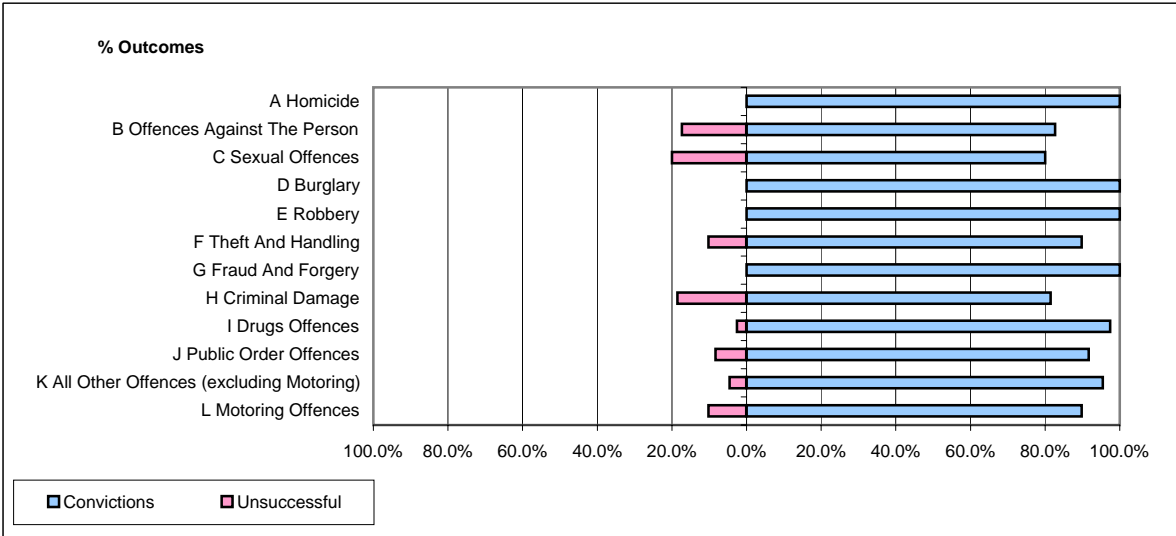


**CPS OUTCOMES BY PRINCIPAL OFFENCE CATEGORY**

**July 2006**

**P26-Norfolk**



	Convictions		Unsuccessful	
	Number of Defendants	%	Number of Defendants	%
<b>A Homicide</b>	<b>1</b>	<b>100.0%</b>	<b>0</b>	<b>0.0%</b>
<b>B Offences Against The Person</b>	<b>134</b>	<b>82.7%</b>	<b>28</b>	<b>17.3%</b>
<b>C Sexual Offences</b>	<b>4</b>	<b>80.0%</b>	<b>1</b>	<b>20.0%</b>
<b>D Burglary</b>	<b>17</b>	<b>100.0%</b>	<b>0</b>	<b>0.0%</b>
<b>E Robbery</b>	<b>2</b>	<b>100.0%</b>	<b>0</b>	<b>0.0%</b>
<b>F Theft And Handling</b>	<b>149</b>	<b>89.8%</b>	<b>17</b>	<b>10.2%</b>
<b>G Fraud And Forgery</b>	<b>3</b>	<b>100.0%</b>	<b>0</b>	<b>0.0%</b>
<b>H Criminal Damage</b>	<b>66</b>	<b>81.5%</b>	<b>15</b>	<b>18.5%</b>
<b>I Drugs Offences</b>	<b>38</b>	<b>97.4%</b>	<b>1</b>	<b>2.6%</b>
<b>J Public Order Offences</b>	<b>88</b>	<b>91.7%</b>	<b>8</b>	<b>8.3%</b>
<b>K All Other Offences (excluding Motoring)</b>	<b>42</b>	<b>95.5%</b>	<b>2</b>	<b>4.5%</b>
<b>L Motoring Offences</b>	<b>519</b>	<b>89.8%</b>	<b>59</b>	<b>10.2%</b>
<b>Admin Finalisations</b>	<b>0</b>	<b>0.0%</b>	<b>35</b>	<b>100.0%</b>
<b>TOTAL</b>	<b>1,063</b>	<b>86.5%</b>	<b>166</b>	<b>13.5%</b>