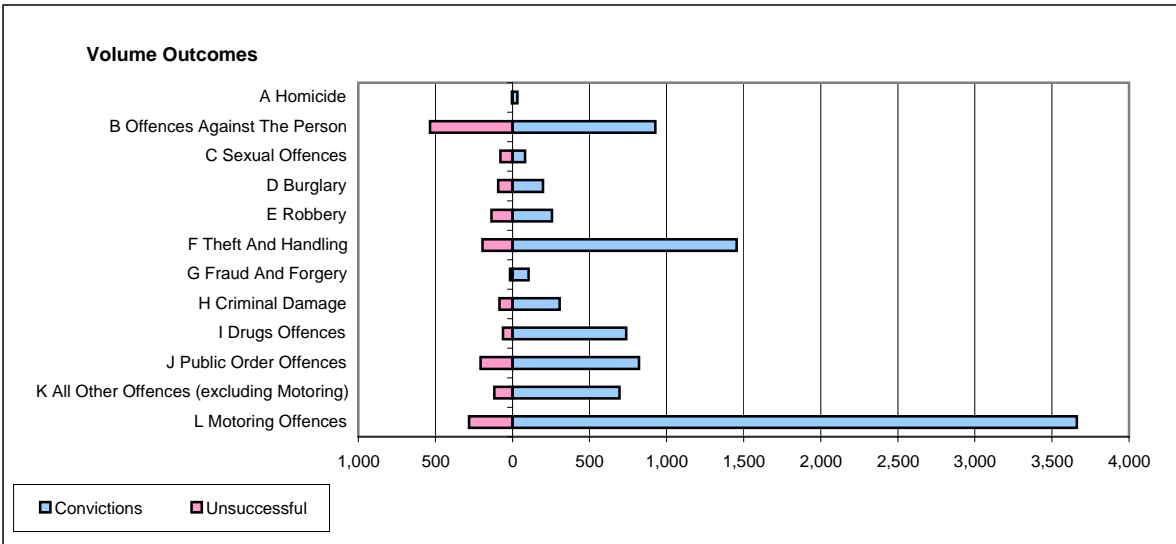
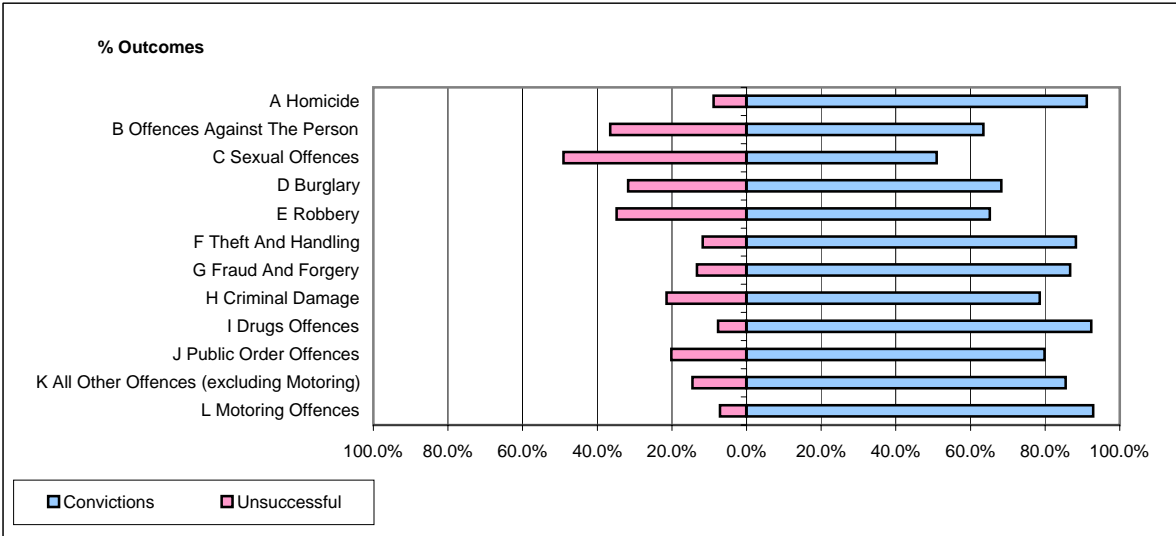


CPS OUTCOMES BY PRINCIPAL OFFENCE CATEGORY

July 2006

P25-Metropolitan&City



	Convictions		Unsuccessful	
	Number of Defendants	%	Number of Defendants	%
A Homicide	31	91.2%	3	8.8%
B Offences Against The Person	927	63.4%	534	36.6%
C Sexual Offences	82	50.9%	79	49.1%
D Burglary	198	68.3%	92	31.7%
E Robbery	256	65.1%	137	34.9%
F Theft And Handling	1,454	88.2%	194	11.8%
G Fraud And Forgery	104	86.7%	16	13.3%
H Criminal Damage	307	78.5%	84	21.5%
I Drugs Offences	737	92.4%	61	7.6%
J Public Order Offences	821	79.9%	207	20.1%
K All Other Offences (excluding Motoring)	695	85.5%	118	14.5%
L Motoring Offences	3,661	92.8%	282	7.2%
Admin Finalisations	0	0.0%	751	100.0%
TOTAL	9,273	78.4%	2,558	21.6%