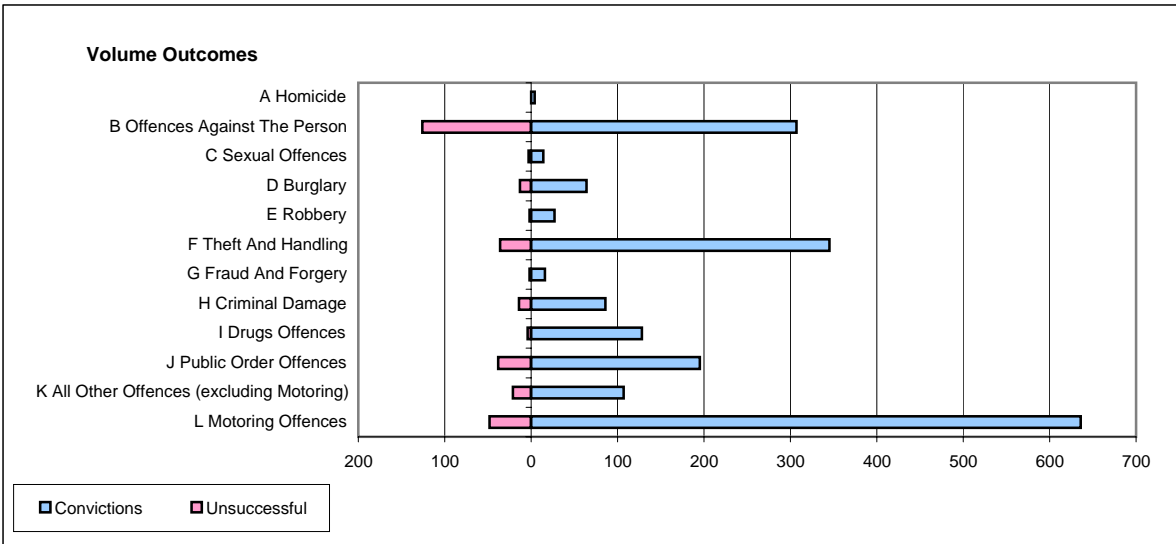
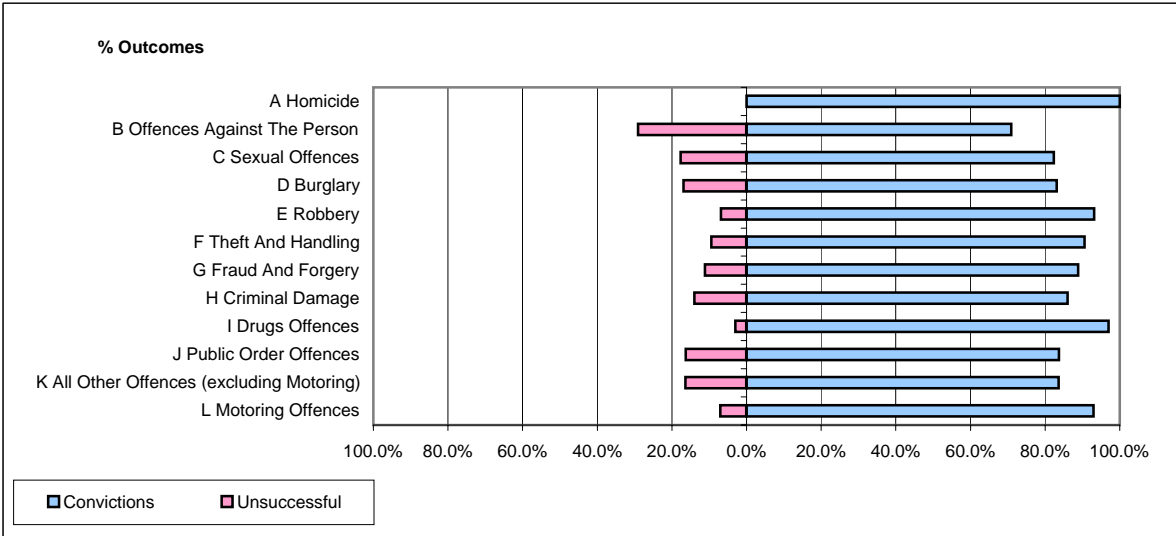


CPS OUTCOMES BY PRINCIPAL OFFENCE CATEGORY

July 2006

P24-Merseyside



	Convictions		Unsuccessful	
	Number of Defendants	%	Number of Defendants	%
A Homicide	4	100.0%	0	0.0%
B Offences Against The Person	307	70.9%	126	29.1%
C Sexual Offences	14	82.4%	3	17.6%
D Burglary	64	83.1%	13	16.9%
E Robbery	27	93.1%	2	6.9%
F Theft And Handling	345	90.6%	36	9.4%
G Fraud And Forgery	16	88.9%	2	11.1%
H Criminal Damage	86	86.0%	14	14.0%
I Drugs Offences	128	97.0%	4	3.0%
J Public Order Offences	195	83.7%	38	16.3%
K All Other Offences (excluding Motoring)	107	83.6%	21	16.4%
L Motoring Offences	636	93.0%	48	7.0%
Admin Finalisations	0	0.0%	52	100.0%
TOTAL	1,929	84.3%	359	15.7%