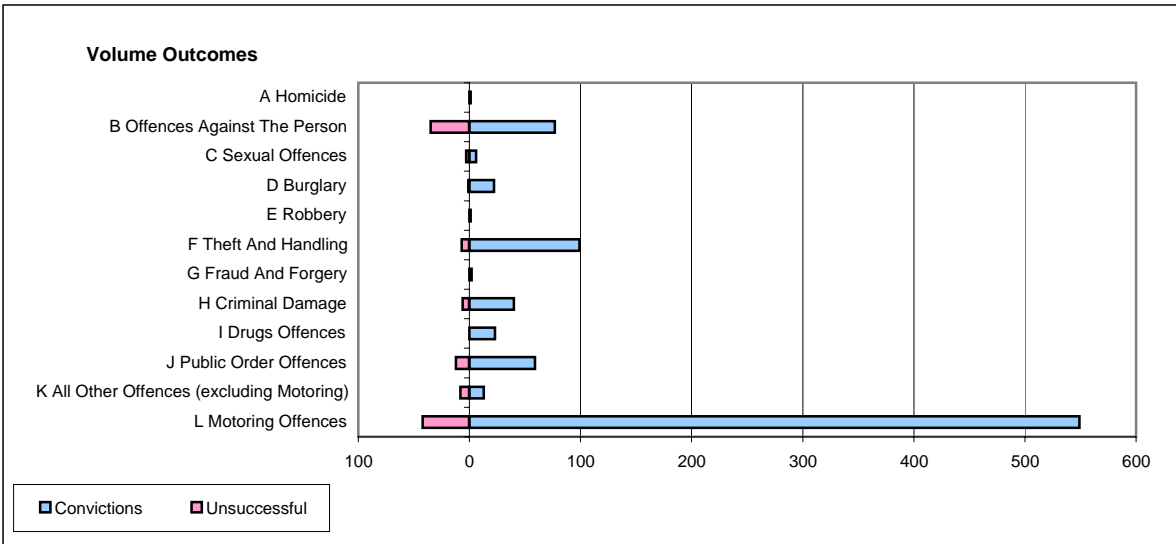
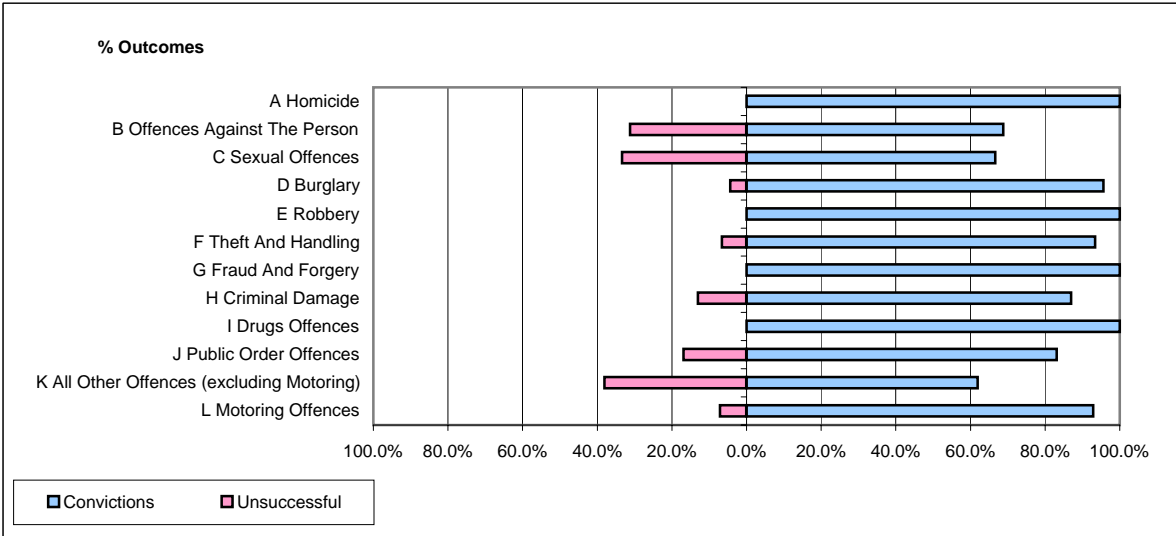


CPS OUTCOMES BY PRINCIPAL OFFENCE CATEGORY

July 2006

P23-Lincolnshire



	Convictions		Unsuccessful	
	Number of Defendants	%	Number of Defendants	%
A Homicide	1	100.0%	0	0.0%
B Offences Against The Person	77	68.8%	35	31.3%
C Sexual Offences	6	66.7%	3	33.3%
D Burglary	22	95.7%	1	4.3%
E Robbery	1	100.0%	0	0.0%
F Theft And Handling	99	93.4%	7	6.6%
G Fraud And Forgery	2	100.0%	0	0.0%
H Criminal Damage	40	87.0%	6	13.0%
I Drugs Offences	23	100.0%	0	0.0%
J Public Order Offences	59	83.1%	12	16.9%
K All Other Offences (excluding Motoring)	13	61.9%	8	38.1%
L Motoring Offences	549	92.9%	42	7.1%
Admin Finalisations	0	0.0%	11	100.0%
TOTAL	892	87.7%	125	12.3%