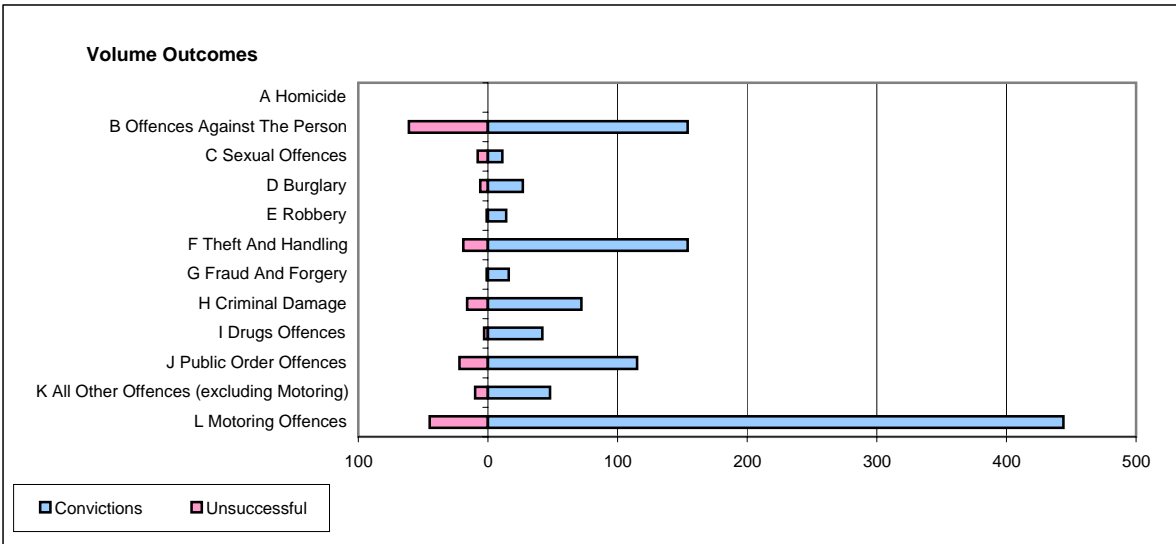
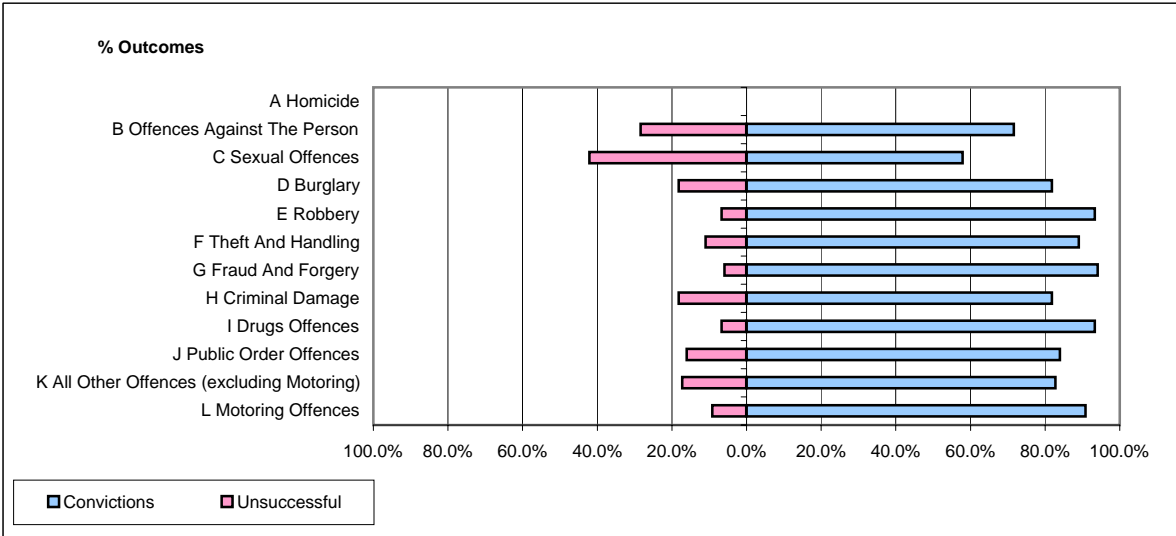


CPS OUTCOMES BY PRINCIPAL OFFENCE CATEGORY

July 2006

P22-Leicestershire



	Convictions		Unsuccessful	
	Number of Defendants	%	Number of Defendants	%
A Homicide	0	#DIV/0!	0	#DIV/0!
B Offences Against The Person	154	71.6%	61	28.4%
C Sexual Offences	11	57.9%	8	42.1%
D Burglary	27	81.8%	6	18.2%
E Robbery	14	93.3%	1	6.7%
F Theft And Handling	154	89.0%	19	11.0%
G Fraud And Forgery	16	94.1%	1	5.9%
H Criminal Damage	72	81.8%	16	18.2%
I Drugs Offences	42	93.3%	3	6.7%
J Public Order Offences	115	83.9%	22	16.1%
K All Other Offences (excluding Motoring)	48	82.8%	10	17.2%
L Motoring Offences	444	90.8%	45	9.2%
Admin Finalisations	0	0.0%	63	100.0%
TOTAL	1,097	81.1%	255	18.9%