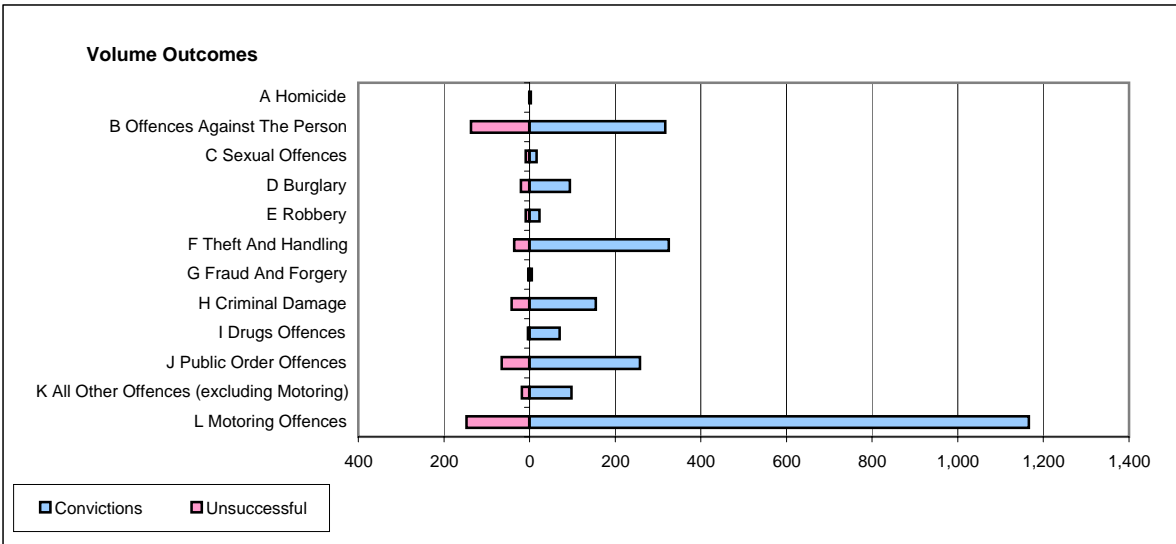
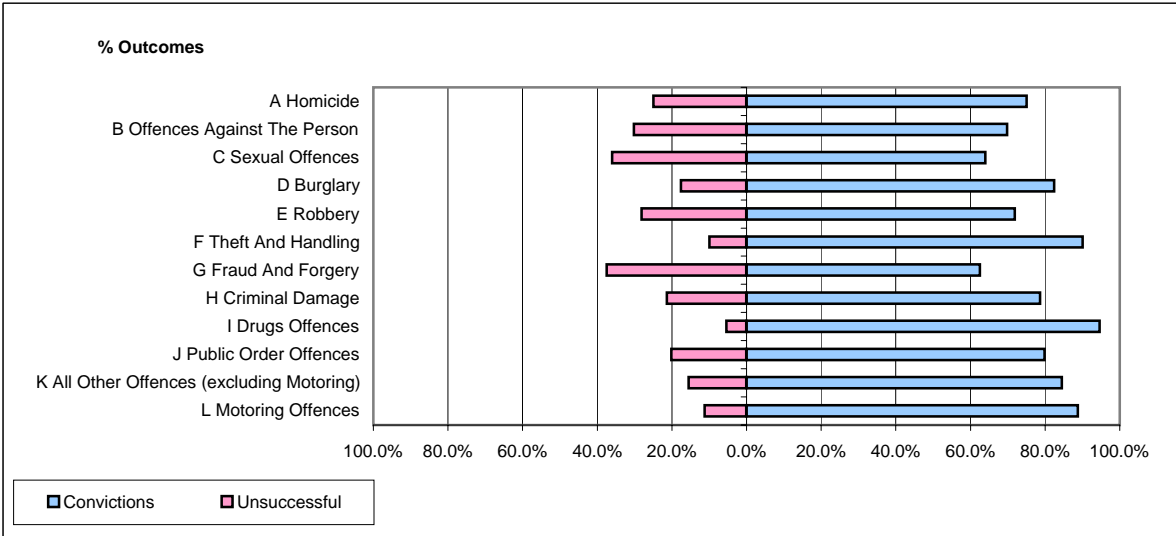


CPS OUTCOMES BY PRINCIPAL OFFENCE CATEGORY

July 2006

P21-Lancashire



	Convictions		Unsuccessful	
	Number of Defendants	%	Number of Defendants	%
A Homicide	3	75.0%	1	25.0%
B Offences Against The Person	317	69.8%	137	30.2%
C Sexual Offences	16	64.0%	9	36.0%
D Burglary	94	82.5%	20	17.5%
E Robbery	23	71.9%	9	28.1%
F Theft And Handling	325	90.0%	36	10.0%
G Fraud And Forgery	5	62.5%	3	37.5%
H Criminal Damage	155	78.7%	42	21.3%
I Drugs Offences	70	94.6%	4	5.4%
J Public Order Offences	258	79.9%	65	20.1%
K All Other Offences (excluding Motoring)	98	84.5%	18	15.5%
L Motoring Offences	1,166	88.8%	147	11.2%
Admin Finalisations	0	0.0%	70	100.0%
TOTAL	2,530	81.9%	561	18.1%