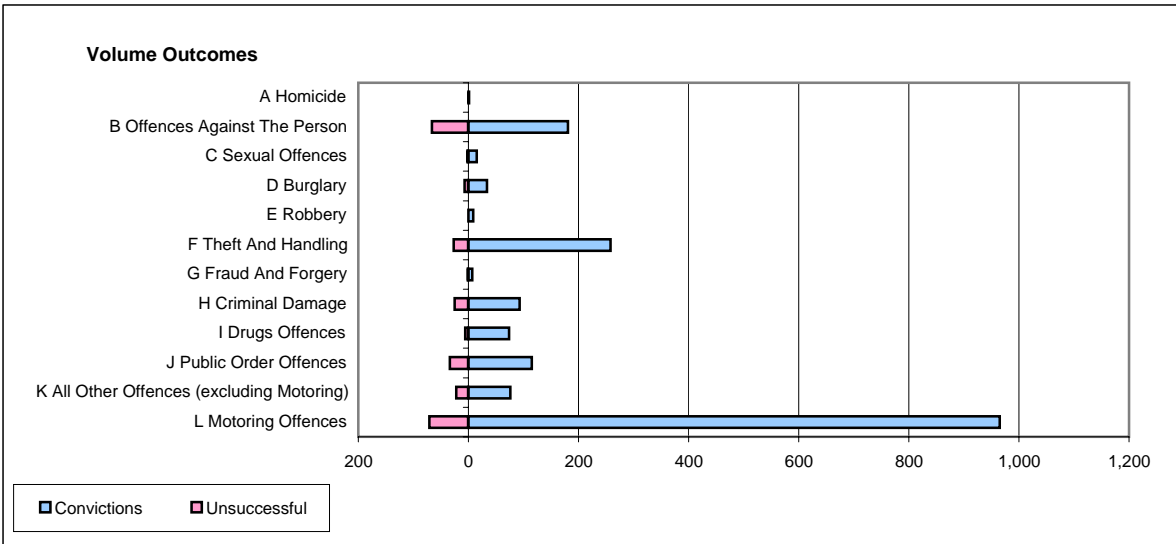
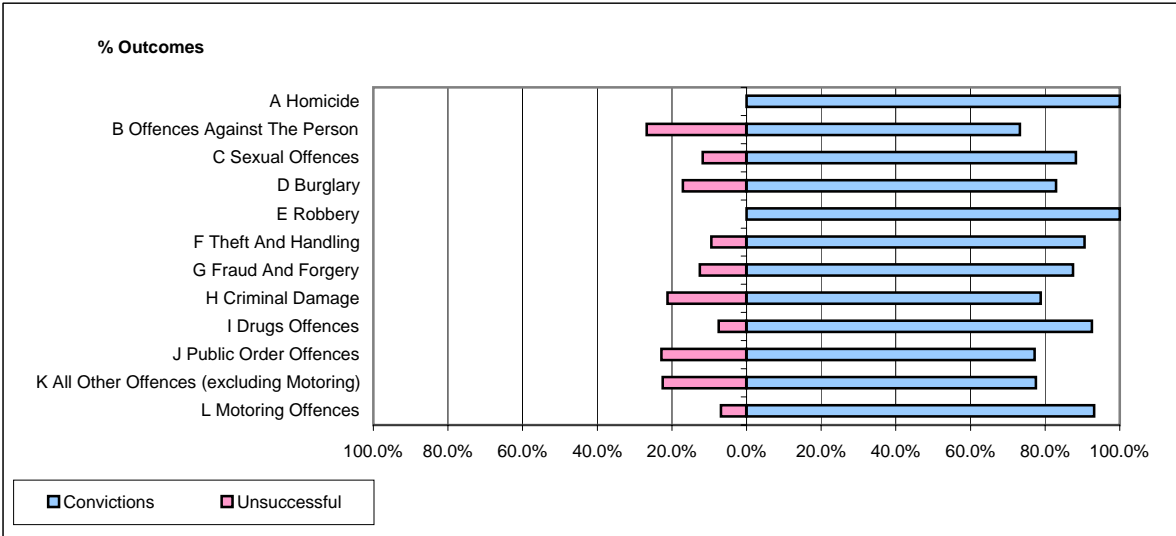


**CPS OUTCOMES BY PRINCIPAL OFFENCE CATEGORY**

**July 2006**

**P20-Kent**



	Convictions		Unsuccessful	
	Number of Defendants	%	Number of Defendants	%
<b>A Homicide</b>	<b>1</b>	<b>100.0%</b>	<b>0</b>	<b>0.0%</b>
<b>B Offences Against The Person</b>	<b>181</b>	<b>73.3%</b>	<b>66</b>	<b>26.7%</b>
<b>C Sexual Offences</b>	<b>15</b>	<b>88.2%</b>	<b>2</b>	<b>11.8%</b>
<b>D Burglary</b>	<b>34</b>	<b>82.9%</b>	<b>7</b>	<b>17.1%</b>
<b>E Robbery</b>	<b>9</b>	<b>100.0%</b>	<b>0</b>	<b>0.0%</b>
<b>F Theft And Handling</b>	<b>258</b>	<b>90.5%</b>	<b>27</b>	<b>9.5%</b>
<b>G Fraud And Forgery</b>	<b>7</b>	<b>87.5%</b>	<b>1</b>	<b>12.5%</b>
<b>H Criminal Damage</b>	<b>93</b>	<b>78.8%</b>	<b>25</b>	<b>21.2%</b>
<b>I Drugs Offences</b>	<b>74</b>	<b>92.5%</b>	<b>6</b>	<b>7.5%</b>
<b>J Public Order Offences</b>	<b>115</b>	<b>77.2%</b>	<b>34</b>	<b>22.8%</b>
<b>K All Other Offences (excluding Motoring)</b>	<b>76</b>	<b>77.6%</b>	<b>22</b>	<b>22.4%</b>
<b>L Motoring Offences</b>	<b>965</b>	<b>93.1%</b>	<b>71</b>	<b>6.9%</b>
<b>Admin Finalisations</b>	<b>0</b>	<b>0.0%</b>	<b>35</b>	<b>100.0%</b>
<b>TOTAL</b>	<b>1,828</b>	<b>86.1%</b>	<b>296</b>	<b>13.9%</b>