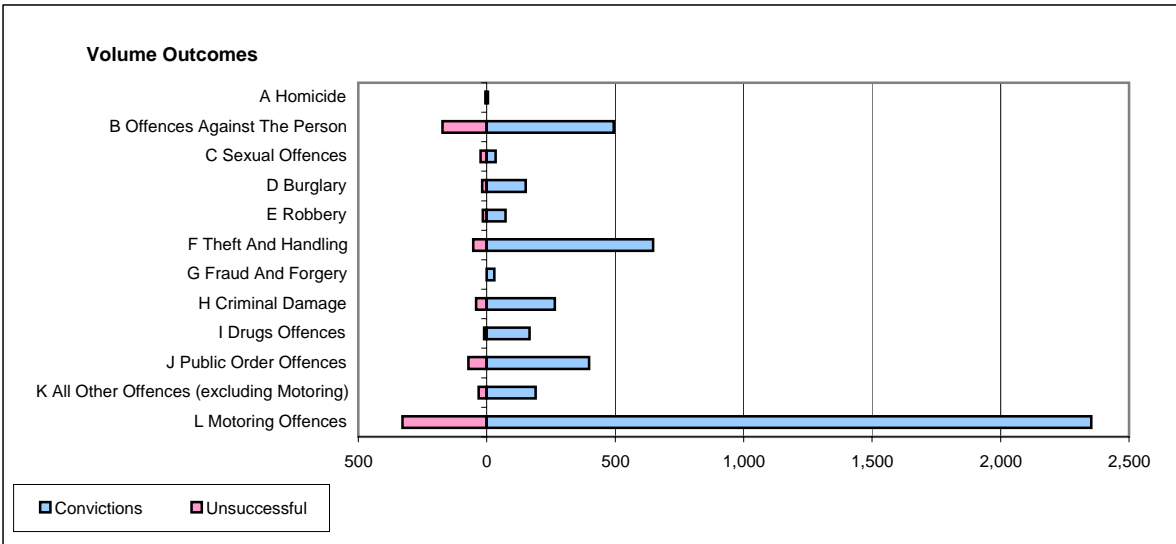
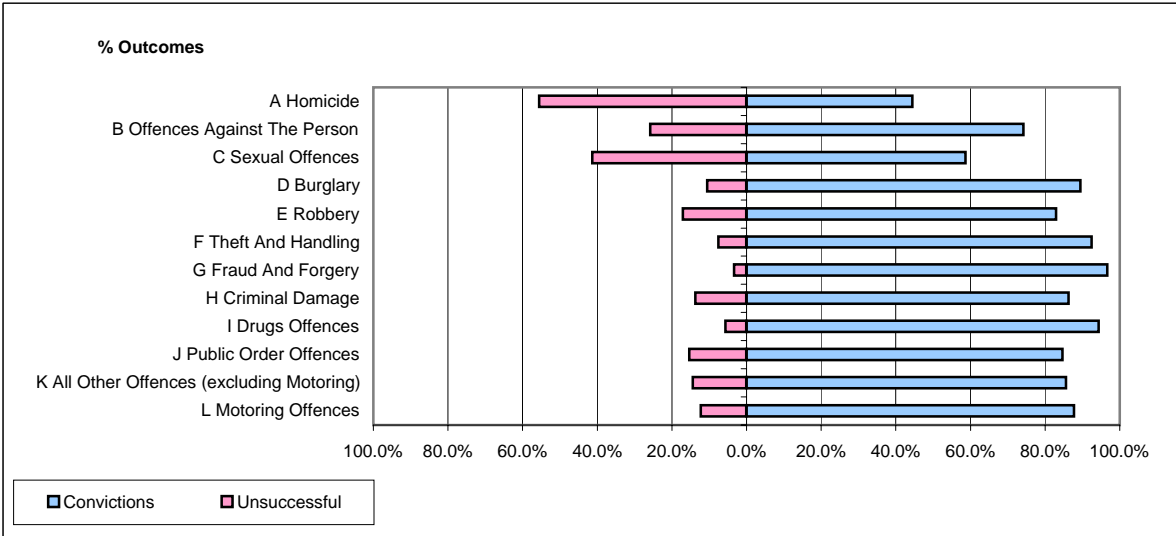


CPS OUTCOMES BY PRINCIPAL OFFENCE CATEGORY

July 2006

P15-GreaterManchester



	Convictions		Unsuccessful	
	Number of Defendants	%	Number of Defendants	%
A Homicide	4	44.4%	5	55.6%
B Offences Against The Person	494	74.2%	172	25.8%
C Sexual Offences	34	58.6%	24	41.4%
D Burglary	152	89.4%	18	10.6%
E Robbery	73	83.0%	15	17.0%
F Theft And Handling	647	92.4%	53	7.6%
G Fraud And Forgery	29	96.7%	1	3.3%
H Criminal Damage	265	86.3%	42	13.7%
I Drugs Offences	166	94.3%	10	5.7%
J Public Order Offences	398	84.7%	72	15.3%
K All Other Offences (excluding Motoring)	190	85.6%	32	14.4%
L Motoring Offences	2,353	87.8%	328	12.2%
Admin Finalisations	0	0.0%	249	100.0%
TOTAL	4,805	82.5%	1,021	17.5%