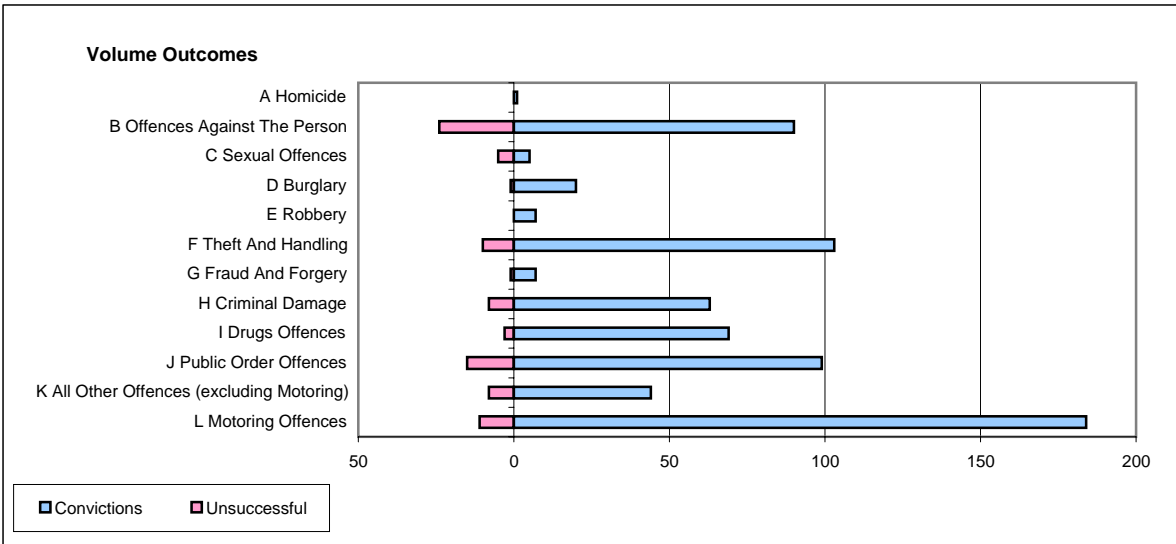
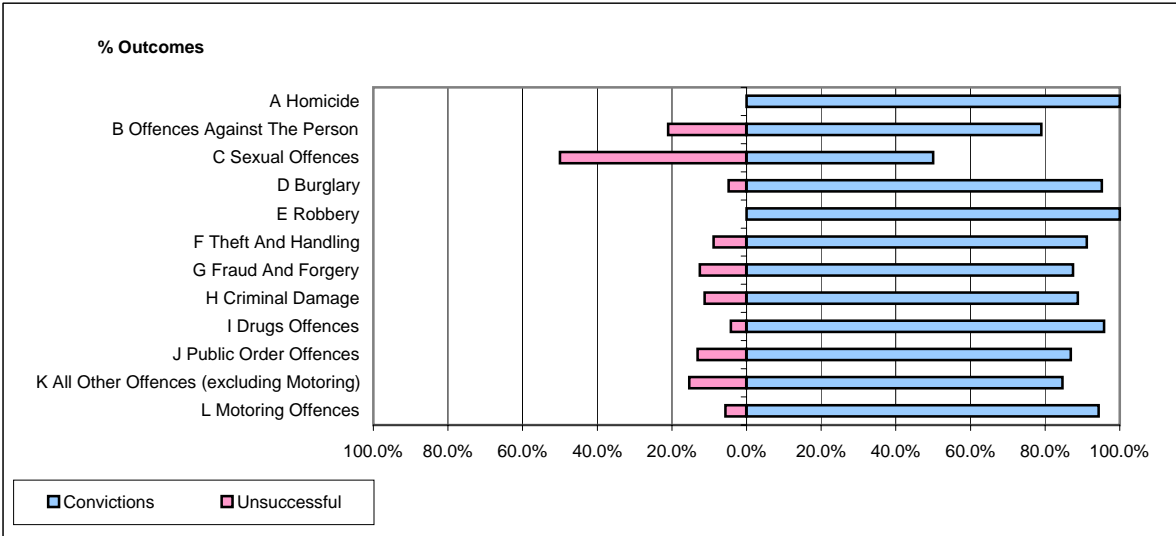


**CPS OUTCOMES BY PRINCIPAL OFFENCE CATEGORY**

**July 2006**

**P11-Durham**



	Convictions		Unsuccessful	
	Number of Defendants	%	Number of Defendants	%
<b>A Homicide</b>	<b>1</b>	<b>100.0%</b>	<b>0</b>	<b>0.0%</b>
<b>B Offences Against The Person</b>	<b>90</b>	<b>78.9%</b>	<b>24</b>	<b>21.1%</b>
<b>C Sexual Offences</b>	<b>5</b>	<b>50.0%</b>	<b>5</b>	<b>50.0%</b>
<b>D Burglary</b>	<b>20</b>	<b>95.2%</b>	<b>1</b>	<b>4.8%</b>
<b>E Robbery</b>	<b>7</b>	<b>100.0%</b>	<b>0</b>	<b>0.0%</b>
<b>F Theft And Handling</b>	<b>103</b>	<b>91.2%</b>	<b>10</b>	<b>8.8%</b>
<b>G Fraud And Forgery</b>	<b>7</b>	<b>87.5%</b>	<b>1</b>	<b>12.5%</b>
<b>H Criminal Damage</b>	<b>63</b>	<b>88.7%</b>	<b>8</b>	<b>11.3%</b>
<b>I Drugs Offences</b>	<b>69</b>	<b>95.8%</b>	<b>3</b>	<b>4.2%</b>
<b>J Public Order Offences</b>	<b>99</b>	<b>86.8%</b>	<b>15</b>	<b>13.2%</b>
<b>K All Other Offences (excluding Motoring)</b>	<b>44</b>	<b>84.6%</b>	<b>8</b>	<b>15.4%</b>
<b>L Motoring Offences</b>	<b>184</b>	<b>94.4%</b>	<b>11</b>	<b>5.6%</b>
<b>Admin Finalisations</b>	<b>0</b>	<b>0.0%</b>	<b>10</b>	<b>100.0%</b>
<b>TOTAL</b>	<b>692</b>	<b>87.8%</b>	<b>96</b>	<b>12.2%</b>