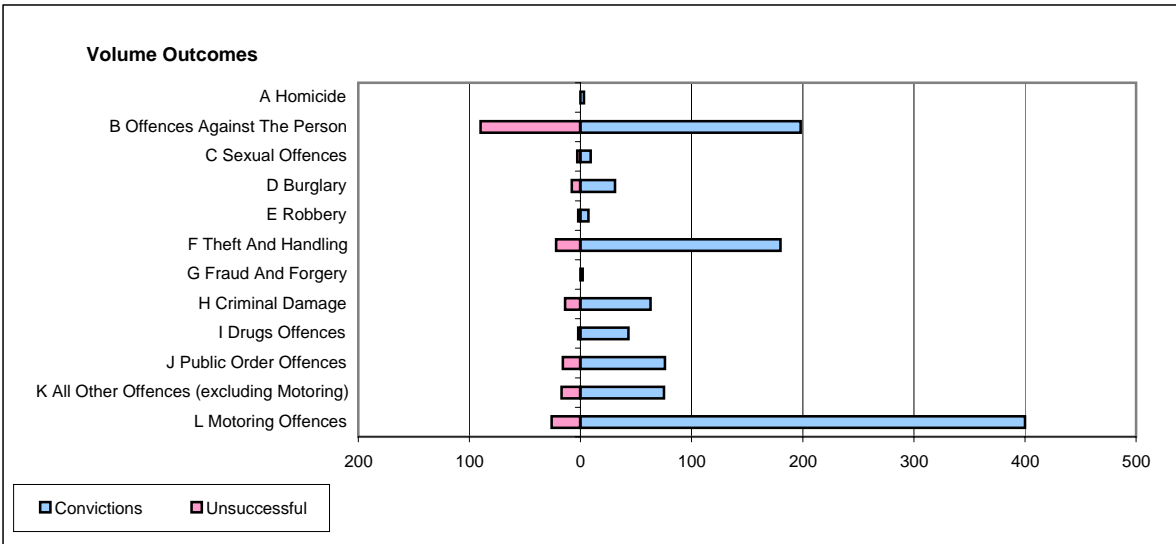
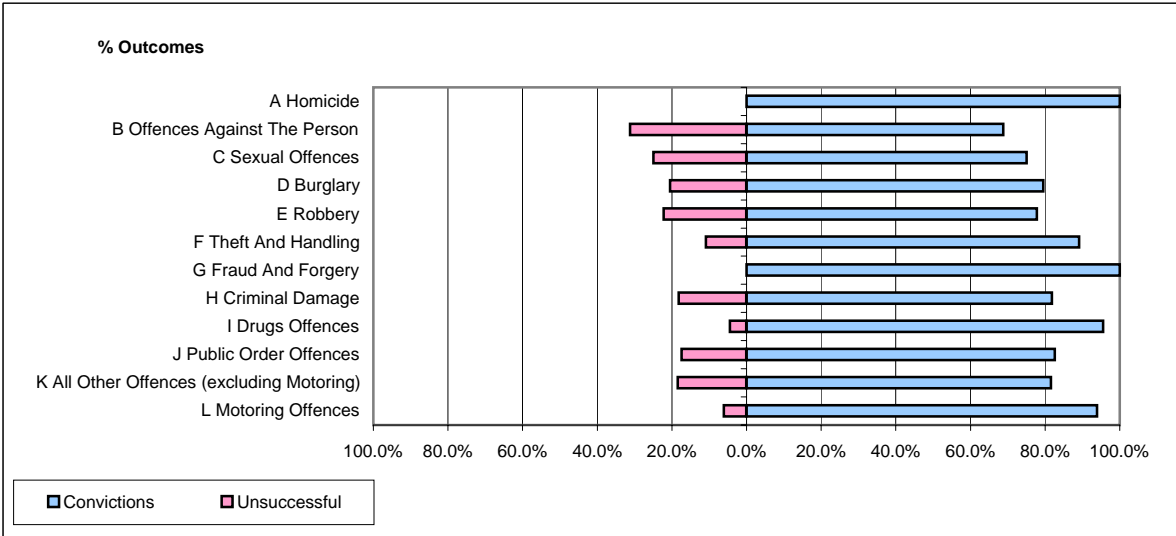


**CPS OUTCOMES BY PRINCIPAL OFFENCE CATEGORY**

**July 2006**

**P08-Derbyshire**



	Convictions		Unsuccessful	
	Number of Defendants	%	Number of Defendants	%
<b>A Homicide</b>	<b>3</b>	<b>100.0%</b>	<b>0</b>	<b>0.0%</b>
<b>B Offences Against The Person</b>	<b>198</b>	<b>68.8%</b>	<b>90</b>	<b>31.3%</b>
<b>C Sexual Offences</b>	<b>9</b>	<b>75.0%</b>	<b>3</b>	<b>25.0%</b>
<b>D Burglary</b>	<b>31</b>	<b>79.5%</b>	<b>8</b>	<b>20.5%</b>
<b>E Robbery</b>	<b>7</b>	<b>77.8%</b>	<b>2</b>	<b>22.2%</b>
<b>F Theft And Handling</b>	<b>180</b>	<b>89.1%</b>	<b>22</b>	<b>10.9%</b>
<b>G Fraud And Forgery</b>	<b>2</b>	<b>100.0%</b>	<b>0</b>	<b>0.0%</b>
<b>H Criminal Damage</b>	<b>63</b>	<b>81.8%</b>	<b>14</b>	<b>18.2%</b>
<b>I Drugs Offences</b>	<b>43</b>	<b>95.6%</b>	<b>2</b>	<b>4.4%</b>
<b>J Public Order Offences</b>	<b>76</b>	<b>82.6%</b>	<b>16</b>	<b>17.4%</b>
<b>K All Other Offences (excluding Motoring)</b>	<b>75</b>	<b>81.5%</b>	<b>17</b>	<b>18.5%</b>
<b>L Motoring Offences</b>	<b>400</b>	<b>93.9%</b>	<b>26</b>	<b>6.1%</b>
<b>Admin Finalisations</b>	<b>0</b>	<b>0.0%</b>	<b>15</b>	<b>100.0%</b>
<b>TOTAL</b>	<b>1,087</b>	<b>83.5%</b>	<b>215</b>	<b>16.5%</b>