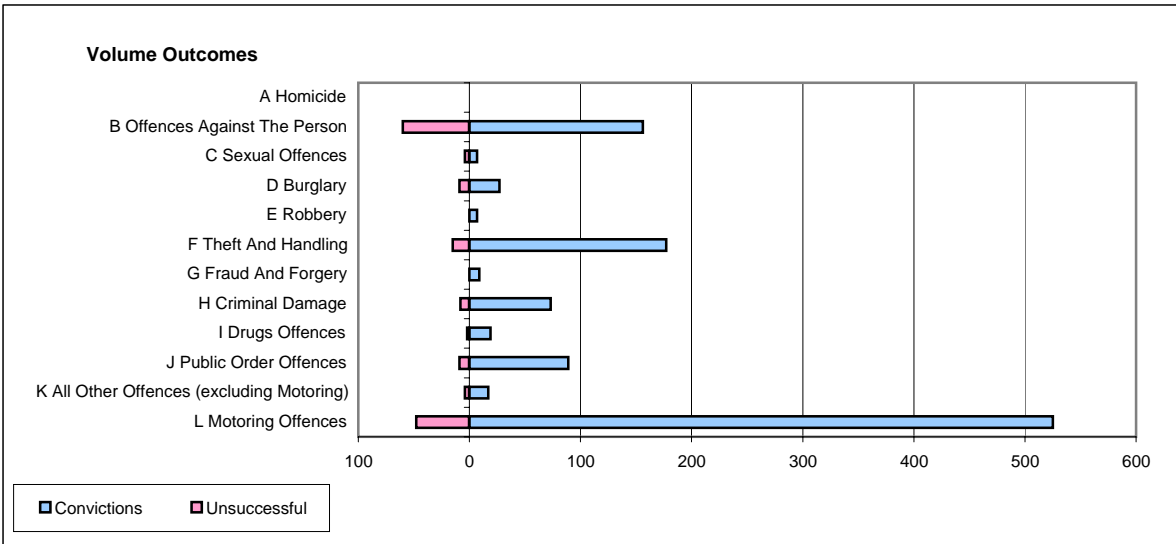
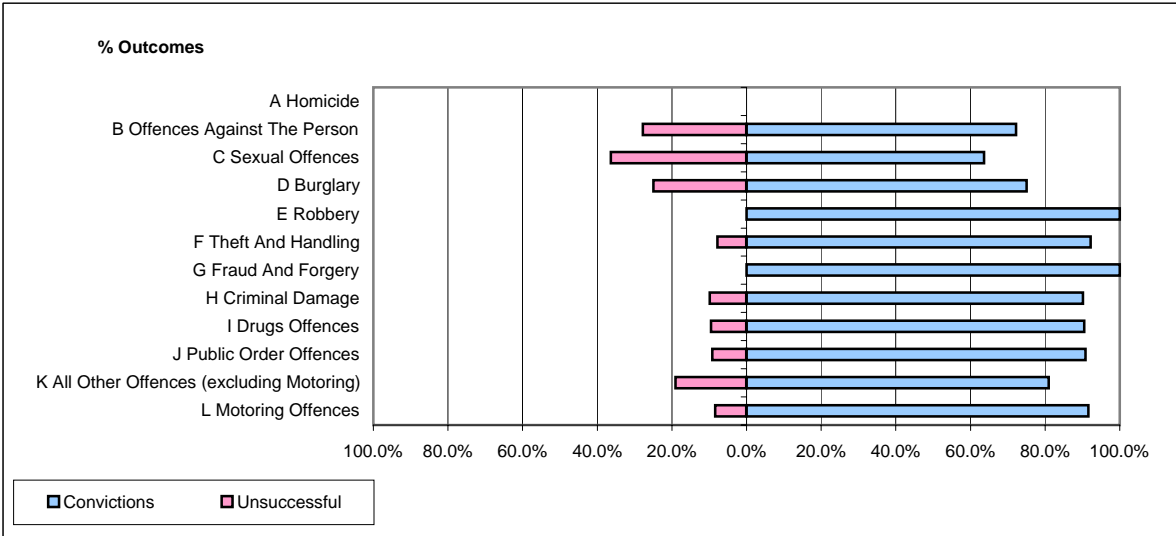


**CPS OUTCOMES BY PRINCIPAL OFFENCE CATEGORY**

**July 2006**

**P04-Cheshire**



	Convictions		Unsuccessful	
	Number of Defendants	%	Number of Defendants	%
<b>A Homicide</b>	<b>0</b>	<b>#DIV/0!</b>	<b>0</b>	<b>#DIV/0!</b>
<b>B Offences Against The Person</b>	<b>156</b>	<b>72.2%</b>	<b>60</b>	<b>27.8%</b>
<b>C Sexual Offences</b>	<b>7</b>	<b>63.6%</b>	<b>4</b>	<b>36.4%</b>
<b>D Burglary</b>	<b>27</b>	<b>75.0%</b>	<b>9</b>	<b>25.0%</b>
<b>E Robbery</b>	<b>7</b>	<b>100.0%</b>	<b>0</b>	<b>0.0%</b>
<b>F Theft And Handling</b>	<b>177</b>	<b>92.2%</b>	<b>15</b>	<b>7.8%</b>
<b>G Fraud And Forgery</b>	<b>9</b>	<b>100.0%</b>	<b>0</b>	<b>0.0%</b>
<b>H Criminal Damage</b>	<b>73</b>	<b>90.1%</b>	<b>8</b>	<b>9.9%</b>
<b>I Drugs Offences</b>	<b>19</b>	<b>90.5%</b>	<b>2</b>	<b>9.5%</b>
<b>J Public Order Offences</b>	<b>89</b>	<b>90.8%</b>	<b>9</b>	<b>9.2%</b>
<b>K All Other Offences (excluding Motoring)</b>	<b>17</b>	<b>81.0%</b>	<b>4</b>	<b>19.0%</b>
<b>L Motoring Offences</b>	<b>525</b>	<b>91.6%</b>	<b>48</b>	<b>8.4%</b>
<b>Admin Finalisations</b>	<b>0</b>	<b>0.0%</b>	<b>21</b>	<b>100.0%</b>
<b>TOTAL</b>	<b>1,106</b>	<b>86.0%</b>	<b>180</b>	<b>14.0%</b>