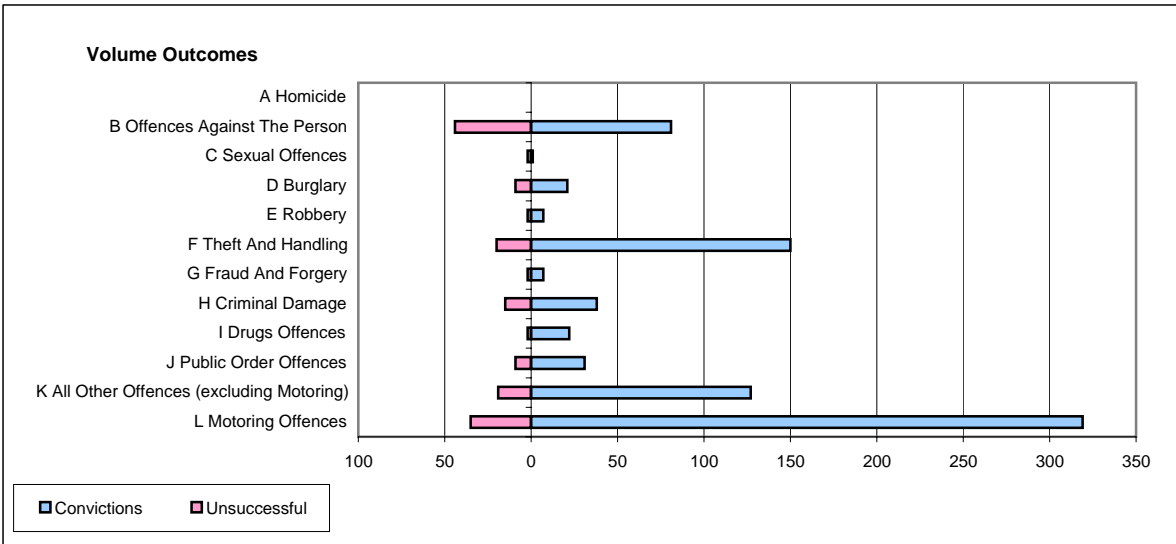
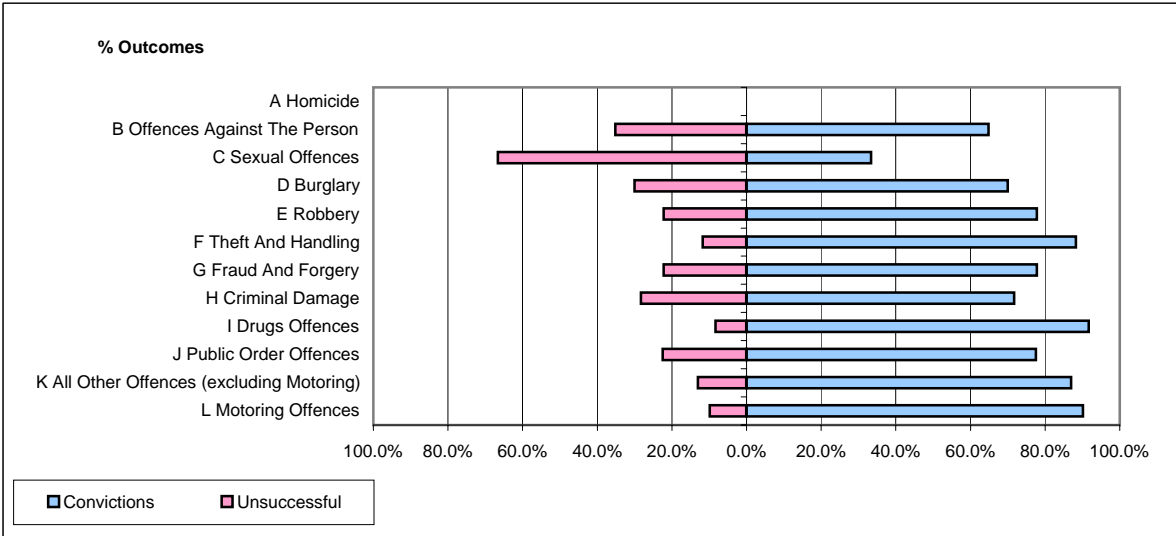


**CPS OUTCOMES BY PRINCIPAL OFFENCE CATEGORY**

**July 2006**

**P02-Bedfordshire**



	Convictions		Unsuccessful	
	Number of Defendants	%	Number of Defendants	%
<b>A Homicide</b>	<b>0</b>	<b>#DIV/0!</b>	<b>0</b>	<b>#DIV/0!</b>
<b>B Offences Against The Person</b>	<b>81</b>	<b>64.8%</b>	<b>44</b>	<b>35.2%</b>
<b>C Sexual Offences</b>	<b>1</b>	<b>33.3%</b>	<b>2</b>	<b>66.7%</b>
<b>D Burglary</b>	<b>21</b>	<b>70.0%</b>	<b>9</b>	<b>30.0%</b>
<b>E Robbery</b>	<b>7</b>	<b>77.8%</b>	<b>2</b>	<b>22.2%</b>
<b>F Theft And Handling</b>	<b>150</b>	<b>88.2%</b>	<b>20</b>	<b>11.8%</b>
<b>G Fraud And Forgery</b>	<b>7</b>	<b>77.8%</b>	<b>2</b>	<b>22.2%</b>
<b>H Criminal Damage</b>	<b>38</b>	<b>71.7%</b>	<b>15</b>	<b>28.3%</b>
<b>I Drugs Offences</b>	<b>22</b>	<b>91.7%</b>	<b>2</b>	<b>8.3%</b>
<b>J Public Order Offences</b>	<b>31</b>	<b>77.5%</b>	<b>9</b>	<b>22.5%</b>
<b>K All Other Offences (excluding Motoring)</b>	<b>127</b>	<b>87.0%</b>	<b>19</b>	<b>13.0%</b>
<b>L Motoring Offences</b>	<b>319</b>	<b>90.1%</b>	<b>35</b>	<b>9.9%</b>
<b>Admin Finalisations</b>	<b>0</b>	<b>0.0%</b>	<b>30</b>	<b>100.0%</b>
<b>TOTAL</b>	<b>804</b>	<b>81.0%</b>	<b>189</b>	<b>19.0%</b>