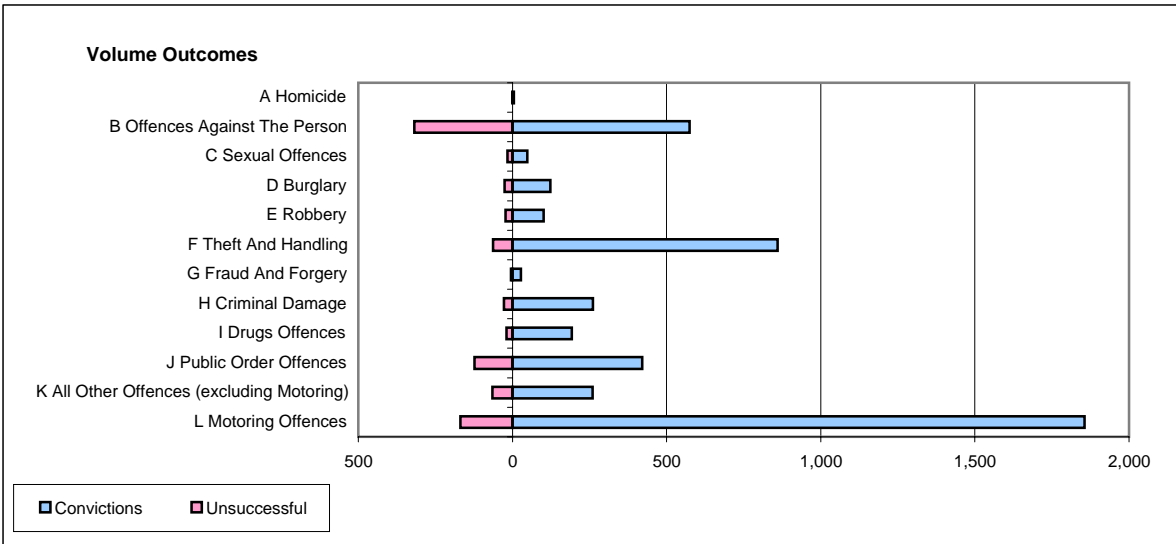
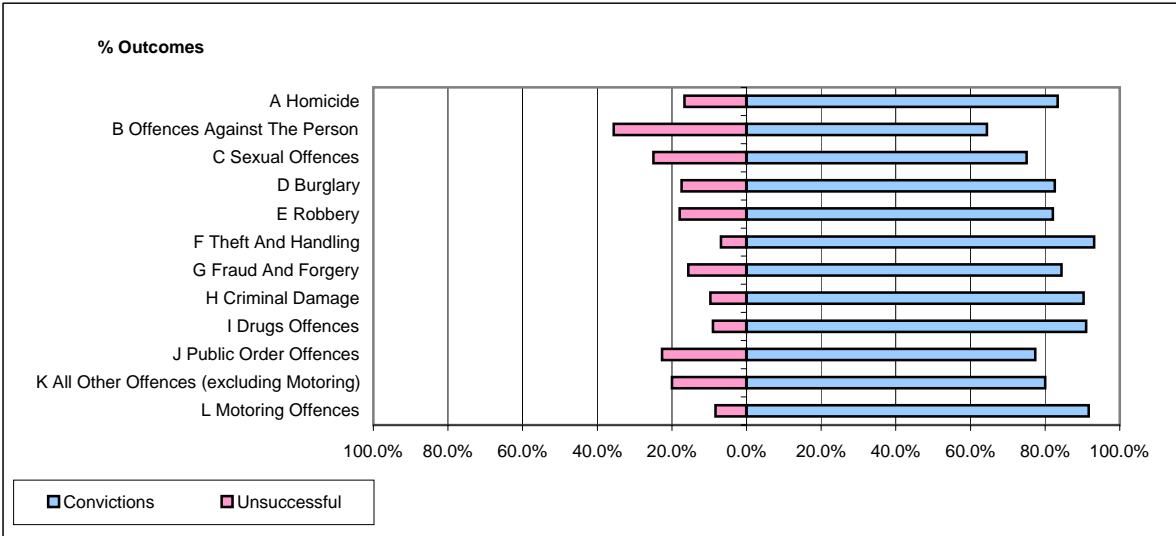


CPS OUTCOMES BY PRINCIPAL OFFENCE CATEGORY

June 2006

P41-WestMidlands



	Convictions		Unsuccessful	
	Number of Defendants	%	Number of Defendants	%
A Homicide	5	83.3%	1	16.7%
B Offences Against The Person	575	64.4%	318	35.6%
C Sexual Offences	48	75.0%	16	25.0%
D Burglary	123	82.6%	26	17.4%
E Robbery	101	82.1%	22	17.9%
F Theft And Handling	860	93.2%	63	6.8%
G Fraud And Forgery	27	84.4%	5	15.6%
H Criminal Damage	261	90.3%	28	9.7%
I Drugs Offences	192	91.0%	19	9.0%
J Public Order Offences	421	77.4%	123	22.6%
K All Other Offences (excluding Motoring)	260	80.0%	65	20.0%
L Motoring Offences	1,856	91.7%	169	8.3%
Admin Finalisations	0	0.0%	109	100.0%
TOTAL	4,729	83.1%	964	16.9%