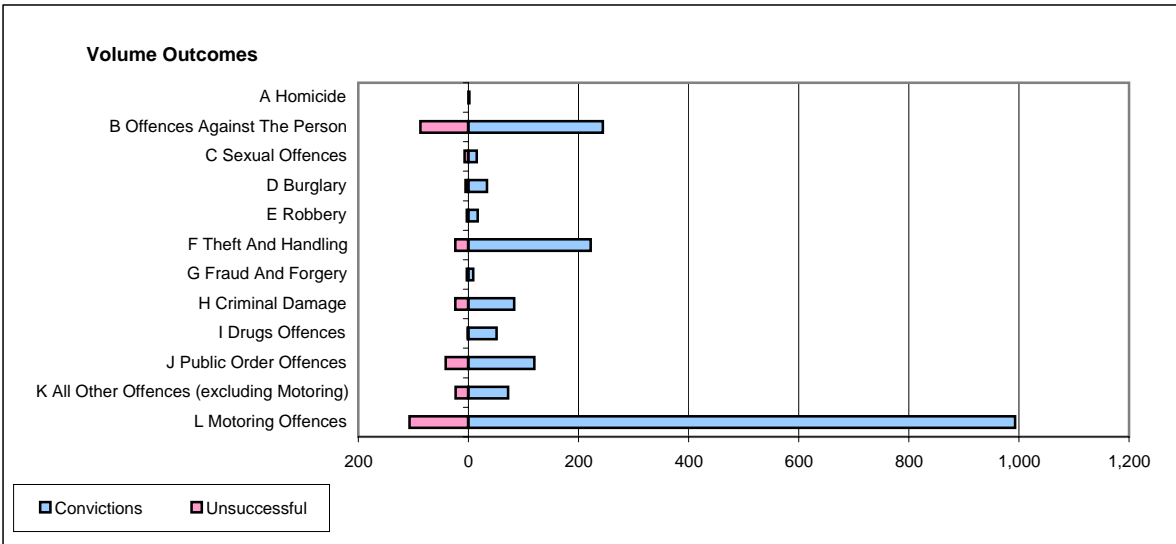
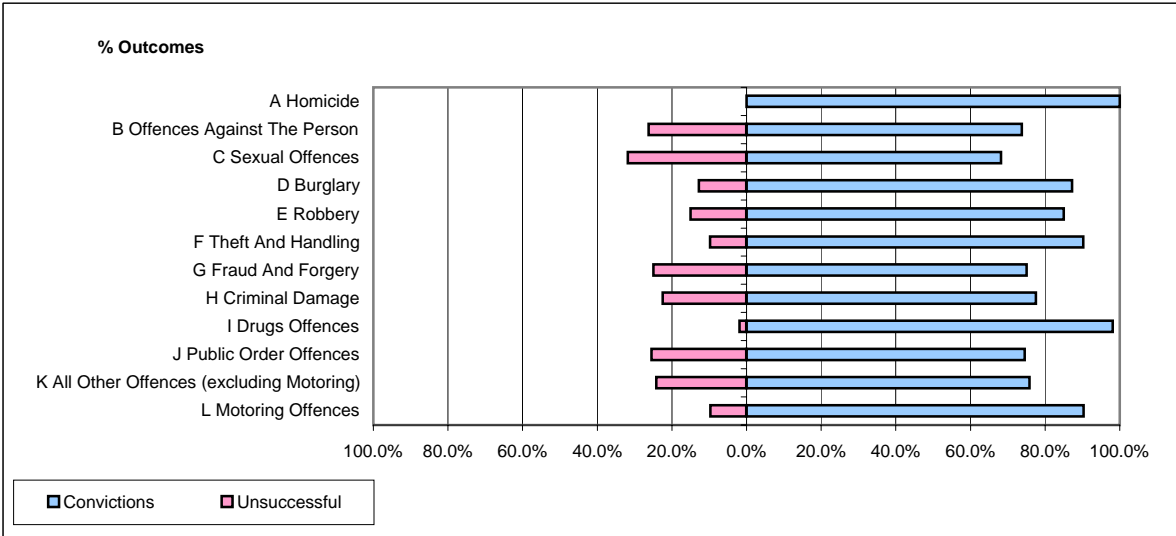


CPS OUTCOMES BY PRINCIPAL OFFENCE CATEGORY

June 2006

P40-WestMercia



	Convictions		Unsuccessful	
	Number of Defendants	%	Number of Defendants	%
A Homicide	2	100.0%	0	0.0%
B Offences Against The Person	244	73.7%	87	26.3%
C Sexual Offences	15	68.2%	7	31.8%
D Burglary	34	87.2%	5	12.8%
E Robbery	17	85.0%	3	15.0%
F Theft And Handling	222	90.2%	24	9.8%
G Fraud And Forgery	9	75.0%	3	25.0%
H Criminal Damage	83	77.6%	24	22.4%
I Drugs Offences	51	98.1%	1	1.9%
J Public Order Offences	120	74.5%	41	25.5%
K All Other Offences (excluding Motoring)	72	75.8%	23	24.2%
L Motoring Offences	993	90.3%	107	9.7%
Admin Finalisations	0	0.0%	43	100.0%
TOTAL	1,862	83.5%	368	16.5%