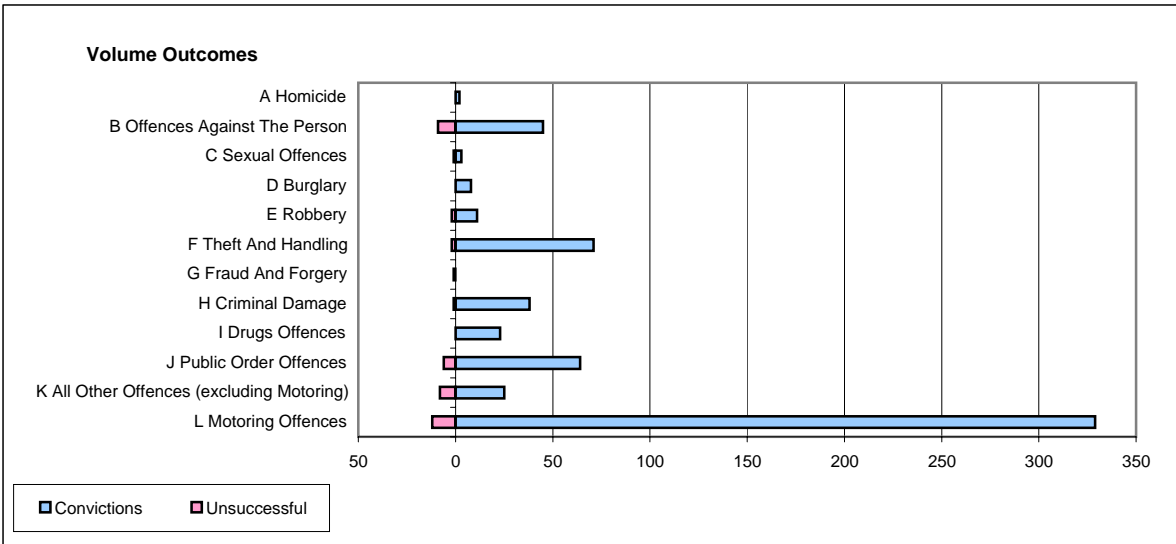
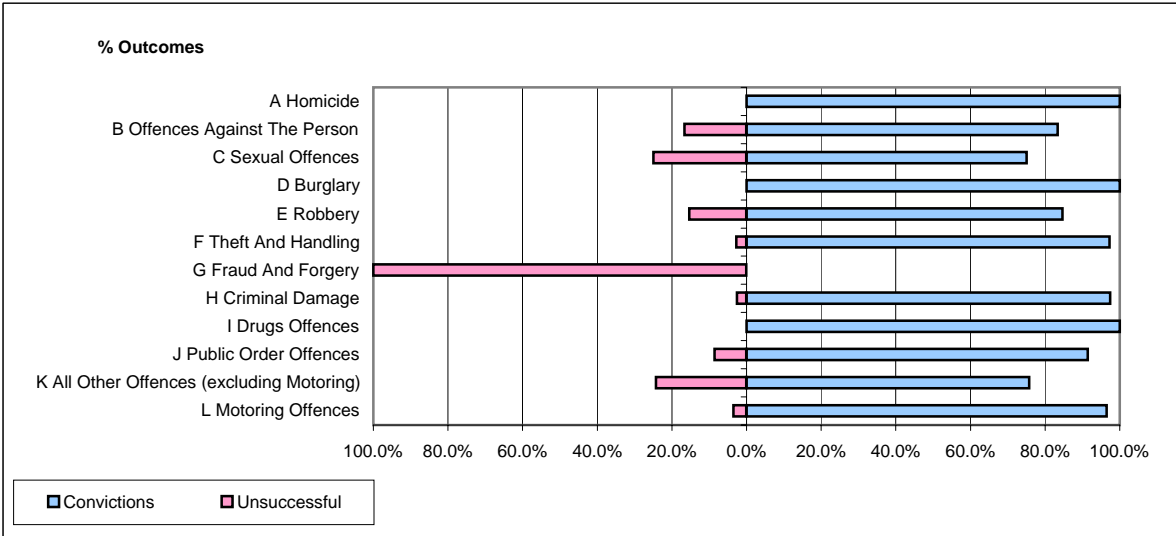


CPS OUTCOMES BY PRINCIPAL OFFENCE CATEGORY

June 2006

P39-Warwickshire



	Convictions		Unsuccessful	
	Number of Defendants	%	Number of Defendants	%
A Homicide	2	100.0%	0	0.0%
B Offences Against The Person	45	83.3%	9	16.7%
C Sexual Offences	3	75.0%	1	25.0%
D Burglary	8	100.0%	0	0.0%
E Robbery	11	84.6%	2	15.4%
F Theft And Handling	71	97.3%	2	2.7%
G Fraud And Forgery	0	0.0%	1	100.0%
H Criminal Damage	38	97.4%	1	2.6%
I Drugs Offences	23	100.0%	0	0.0%
J Public Order Offences	64	91.4%	6	8.6%
K All Other Offences (excluding Motoring)	25	75.8%	8	24.2%
L Motoring Offences	329	96.5%	12	3.5%
Admin Finalisations	0	0.0%	8	100.0%
TOTAL	619	92.5%	50	7.5%