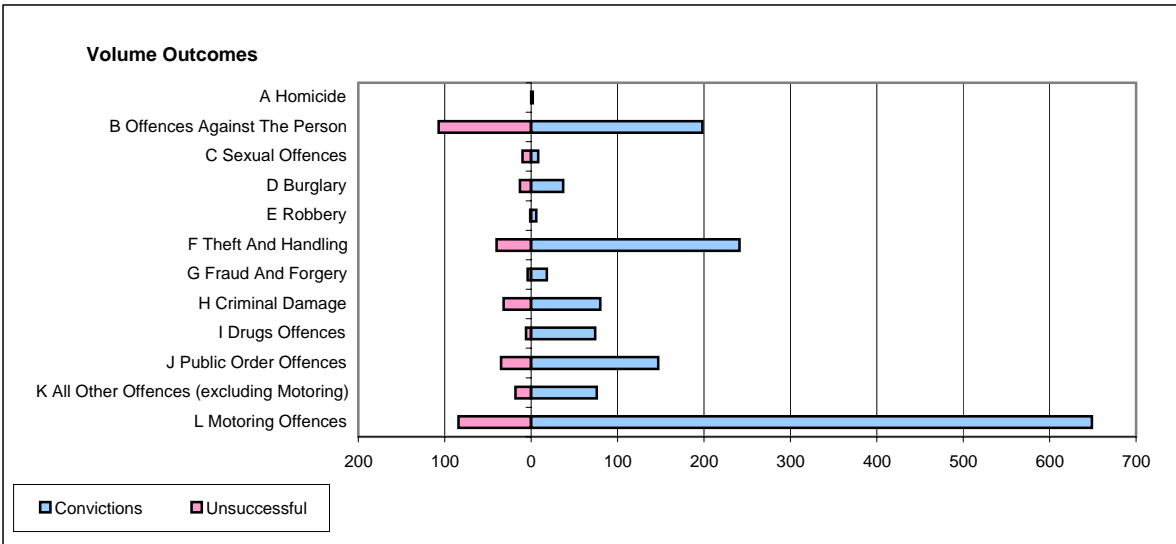
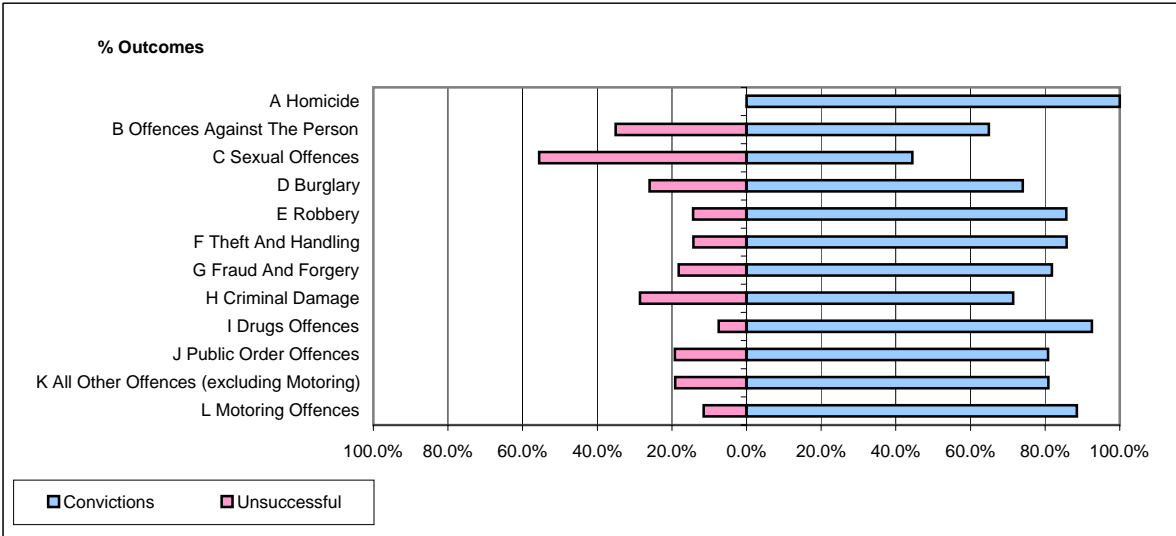


CPS OUTCOMES BY PRINCIPAL OFFENCE CATEGORY

June 2006

P37-Sussex



	Convictions		Unsuccessful	
	Number of Defendants	%	Number of Defendants	%
A Homicide	2	100.0%	0	0.0%
B Offences Against The Person	198	64.9%	107	35.1%
C Sexual Offences	8	44.4%	10	55.6%
D Burglary	37	74.0%	13	26.0%
E Robbery	6	85.7%	1	14.3%
F Theft And Handling	241	85.8%	40	14.2%
G Fraud And Forgery	18	81.8%	4	18.2%
H Criminal Damage	80	71.4%	32	28.6%
I Drugs Offences	74	92.5%	6	7.5%
J Public Order Offences	147	80.8%	35	19.2%
K All Other Offences (excluding Motoring)	76	80.9%	18	19.1%
L Motoring Offences	649	88.5%	84	11.5%
Admin Finalisations	0	0.0%	37	100.0%
TOTAL	1,536	79.9%	387	20.1%