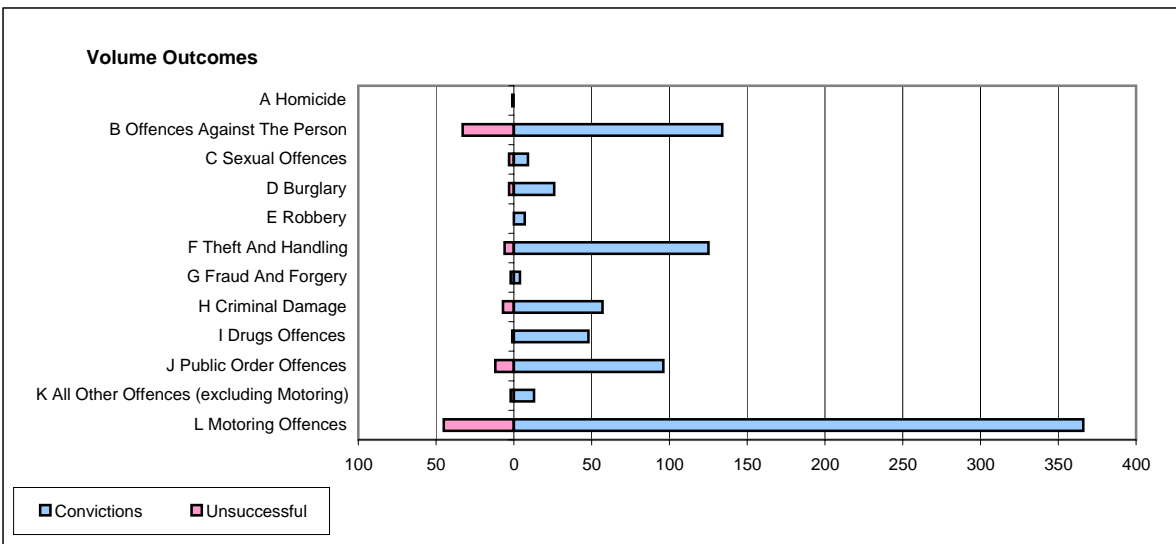
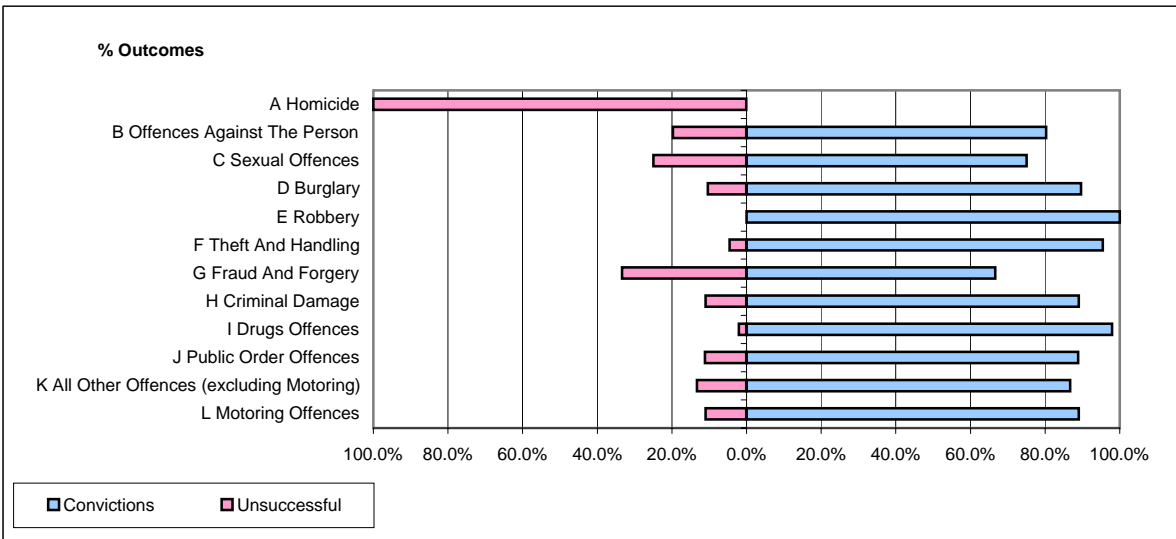


CPS OUTCOMES BY PRINCIPAL OFFENCE CATEGORY

June 2006

P35-Suffolk



	Convictions		Unsuccessful	
	Number of Defendants	%	Number of Defendants	%
A Homicide	0	0.0%	1	100.0%
B Offences Against The Person	134	80.2%	33	19.8%
C Sexual Offences	9	75.0%	3	25.0%
D Burglary	26	89.7%	3	10.3%
E Robbery	7	100.0%	0	0.0%
F Theft And Handling	125	95.4%	6	4.6%
G Fraud And Forgery	4	66.7%	2	33.3%
H Criminal Damage	57	89.1%	7	10.9%
I Drugs Offences	48	98.0%	1	2.0%
J Public Order Offences	96	88.9%	12	11.1%
K All Other Offences (excluding Motoring)	13	86.7%	2	13.3%
L Motoring Offences	366	89.1%	45	10.9%
Admin Finalisations	0	0.0%	29	100.0%
TOTAL	885	86.0%	144	14.0%